

4

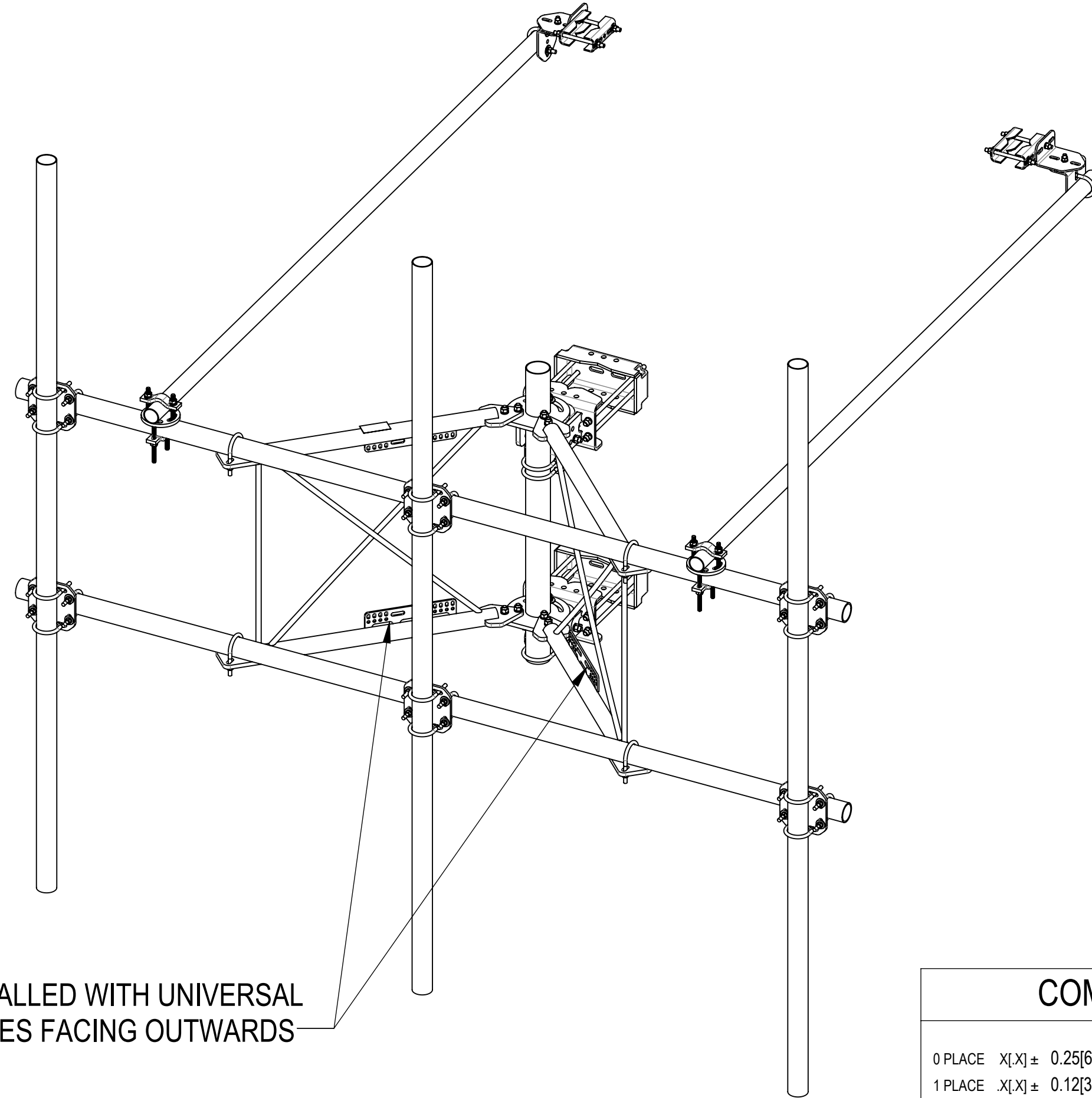
3

2

1

- 1.0 GENERAL NOTES
  - 1.1 ALL METRIC DIMENSIONS ARE IN BRACKETS [X.XX]
  - 1.2 FOR PATENT INFO: <https://www.cs-pat.com>
- 2.0 DESIGN NOTES
  - 2.1 ANY HAZARDS OR OBSTRUCTIONS TO THE CLIMBING FACILITY AND SAFETY CLIMB MUST BE IDENTIFIED PRIOR TO INSTALLING THE APPURTENANCE. ADDITIONAL PRODUCTS MAY BE REQUIRED TO MAINTAIN THE INTEGRITY OF THE SAFETY CLIMB. DURING INSTALLATION, TEMPORARY AND/OR PERMANENT PRECAUTIONARY MEASURES SHOULD BE TAKEN TO PRESERVE THE CLIMBING FACILITY AND/OR SAFETY CLIMB.
  - 2.2 UP TO 5.0° TAPER AVAILABLE ON MODELS THAT SUPPORT ADJUSTMENT.
  - 2.3 FACE WIDTH MUST BE GREATER THAN OR EQUAL TO 17.1" TO MEET THE APEX DISTANCE OF ANTENNA TO ANTENNA >24".
- 3.0 MANUFACTURING/SPECIAL REQUIREMENTS
  - 3.1 TIGHTEN ALL BOLTS SECURING FLAT PLATES BY THE TURN-OF-NUT METHOD. TIGHTEN ALL U-BOLTS USING TURN-OF-NUT METHOD WITH ATTENTION TO LEAVE EQUAL DISTANCE AND EQUAL FORCE ON EACH LEG OF THE U-BOLT.
- 4.0 TEST
- 5.0 PACKAGING
  - 5.1 PACKAGING SHALL MEET COMMSCOPE REQUIREMENTS PER DOCUMENT IS-PL-3005.
  - 5.2 PRINTED DOCUMENT TO BE PLACED INSIDE POLYBAG AND THEN IN SHIPPING CONTAINER.
  - 5.3 EXTRA HARDWARE MAY BE SUPPLIED, BAGGED AND SHIPPED.

REVISIONS			
REV.	DESCRIPTION	DATE	APPROVED
A	INITIAL RELEASE	JL1183 24MAY24	CB1094 40196505CMO
B	SFG2292-00(ITEM 2) WAS SFG2278; MT-651-120 (ITEM 25) WAS MT546120120; MT546120120(ITEM 27) QTY 3 WAS 5; GUB-4240(ITEM 14) WAS GUB-4352; GUB-4352(ITEM 15) QTY 4 WAS 6; ADDED SHEET 5 V-ARM VIEW	JL1183 25NOV24	YZ1080 40209215CMO



SHOULD BE INSTALLED WITH UNIVERSAL  
INTERFACE PLATES FACING OUTWARDS

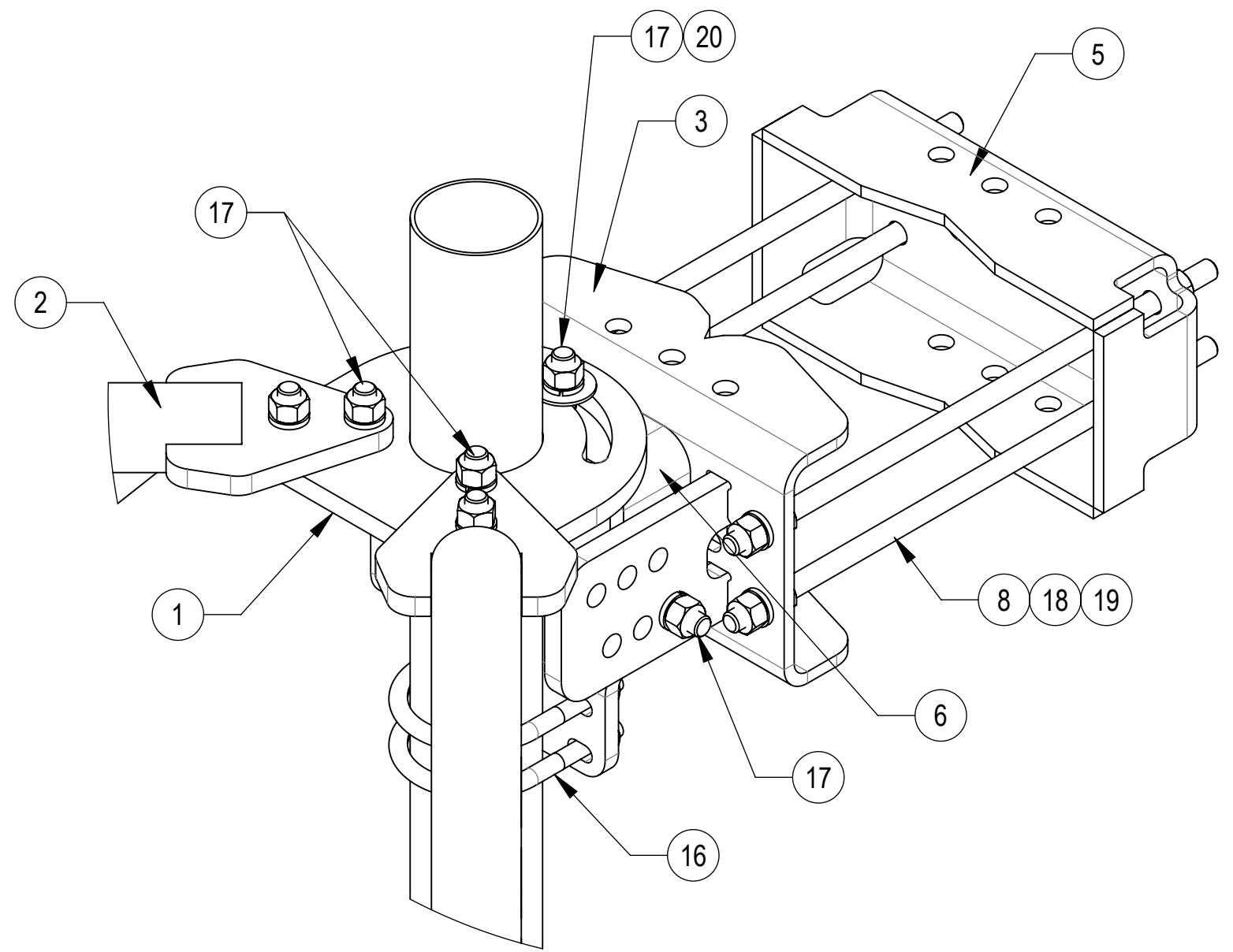
<b>COMMSCOPE, INC. OF NORTH CAROLINA</b>											
TOLERANCES					SAP MATERIAL MASTER						
0 PLACE .X[X] ± 0.25[6.3]		2 PLACE .XX[X] ± 0.06[1.5]			<b>SFG22HDX-11-3-120</b>						
1 PLACE .X[X] ± 0.12[3.0]		ANGLES ± 2°									
FINISH					MATERIAL						
UNLESS OTHERWISE SPECIFIED DIMENSIONS ARE IN INCHES INTERPRET PER ANSI Y 14.5M-1994					NAME		DATE		<b>PG,SF,11'FP,(3)120"AP</b>		
					CE JL1183		24MAY24				
					RW JL1183		11/29/2024				
					AD YZ1080		12/02/2024				
					RE YMENG		12/24/2024		SCALE		DOCUMENT NO.
ECN 40209215CMO					<b>1:16</b>		<b>SFG22HDX-11-3-120</b>				
SIZE		Auth Group		INSL		MODEL		DRAWING			
<b>C</b>						VERSION		STATUS		REVISION	
						01		RE		B	
DENSITY		631.86		lbs/in³		MASS		631.86		lbs	
VOLUME		2236.12		in³		SURFACE AREA		24224.55		in²	
HEIGHT		120"		LENGTH		132"		WIDTH		120"	

4

3

2

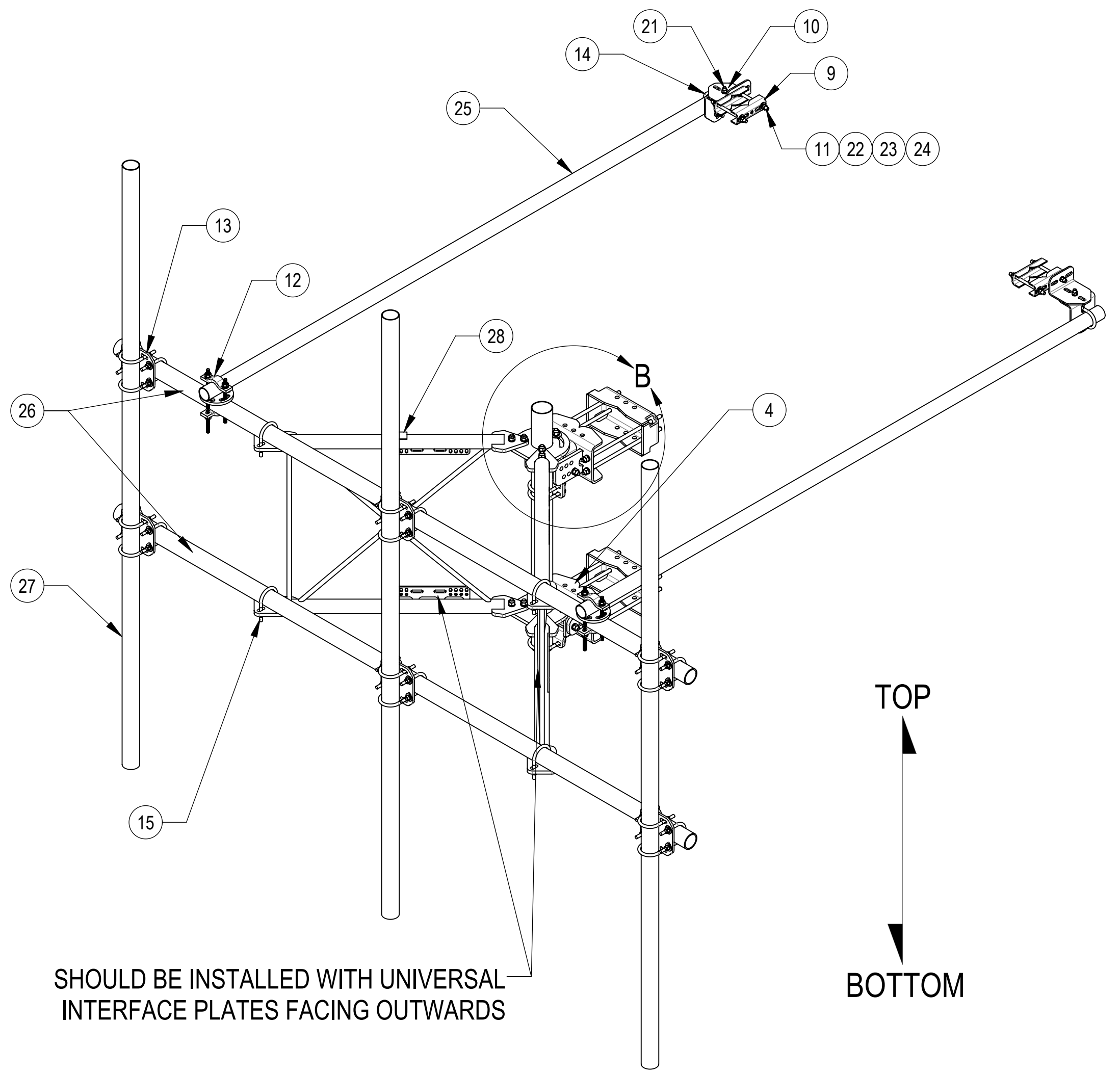
1



**DETAIL B**  
SCALE 1 : 4

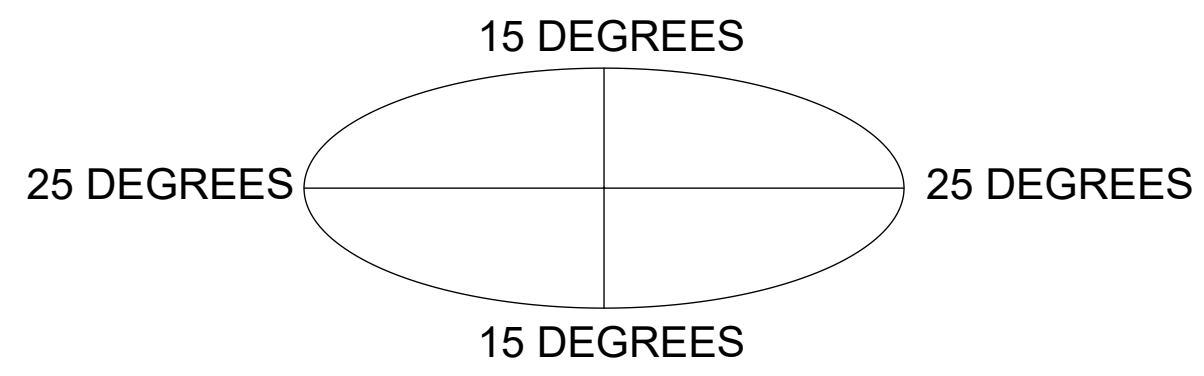
COMPONENT PART NUMBERS PROVIDED FOR ASSEMBLY PURPOSES;  
INDIVIDUAL COMPONENTS MAY BE SHIPPED AS PARTS WITHIN AN INCLUDED KIT.

ITEM	PART NO.	DESCRIPTION	QTY.	WEIGHT	NOTE NO.
1	SFG2270	BACK VERTICAL ARM MOUNT	1	36.96 LBS	
2	SFG2292-00	WELDMNT, V-ARM, SECTOR FRAME 22	2	49.69 LBS	
3	SFG2380	WELDMNT, HD, TOP TAPER BRACKET	1	22.78 LBS	
4	SFG2381	WELDMNT, HD, LOWER TOWER LEG BRACKET	1	17.42 LBS	
5	SFG2289	G2 RRU BACK CLAMP, HD	2	18.65 LBS	
6	SFG2386	WELDMNT, SFG2 AZIMUTH BRACKET	1	10.07 LBS	
7	SFG2397-00	WELDMNT, G23 AZIMUTH BRACKET	1	7.94 LBS	
8	MT-382-18	5/8" X 18" THREADED ROD	8	1.43 LBS	
9	SAB01	FORMED CLAMP	4	1.35 LBS	
10	XAU01	ANGLE, CROSSOVER, 1.9-3.5" X 1.9-3.5" OD	4	2.98 LBS	
11	MT-379-8	1/2" X 8" GALV THREADED ROD	4	0.45 LBS	
12	XP-R	CROSSOVER PLATE, ROUND, UP TO 3.5" OD	2	6.20 LBS	
13	XP-2525	CROSSOVER PLATE KIT, 2-7/8 OD X 2-7/8 OD	6	8.37 LBS	
14	GUB-4240	1/2" X 2-1/2" X 4" GALV U-BOLT	2	0.56 LBS	
15	GUB-4352	1/2" X 3" X 5-1/4" GALV U-BOLT	4	0.71 LBS	
16	GUB-4355	1/2" X 3-5/8" X 5" GALV U-BOLT	3	0.71 LBS	
17	GB-05225	5/8" X 2-1/4" GALV BOLT KIT	14	0.28 LBS	
18	GN-05	5/8" GALV HEX NUT	24	0.08 LBS	
19	GWL-05	5/8" GALV LOCK WASHER	16	0.03 LBS	
20	GWF-05	5/8" GALV FLAT WASHER, 1.7OD	2	0.06 LBS	
21	GB-04145	1/2" X 1-1/2" GALV BOLT KIT	2	0.13 LBS	
22	GN-04	1/2" GALV HEX NUT	10	0.04 LBS	
23	GWL-04	1/2" GALV LOCK WASHER	10	0.01 LBS	
24	GWF-04	1/2" GALV FLAT WASHER	8	0.04 LBS	
25	MT-651-120	PIPE, 2.375"OD X 120"	2	29.07 LBS	
26	MT546132	2.875" O.D. X 132" PIPE	2	62.64 LBS	
27	MT546120120	PIPE, 2.875"OD X 120"	3	35.44 LBS	
28	SFG2255	LABEL, SFG22HDX	1	0.04 LBS	



SHOULD BE INSTALLED WITH UNIVERSAL  
INTERFACE PLATES FACING OUTWARDS

**ALLOWABLE TIEBACK ANGLE**  
± 15 DEGREES VERTICAL  
± 25 DEGREES HORIZONTAL



COMMSCOPE, INC. OF NORTH CAROLINA				
TITLE PG,SF,11"FP,(3)120"AP				
SIZE <b>C</b>	SCALE <b>1:16</b>	DOCUMENT NO. <b>SFG22HDX-11-3-120</b>		
DRAWING		VERSION	STATUS	REVISION
		01	RE	B
				SHEET 2 OF 7

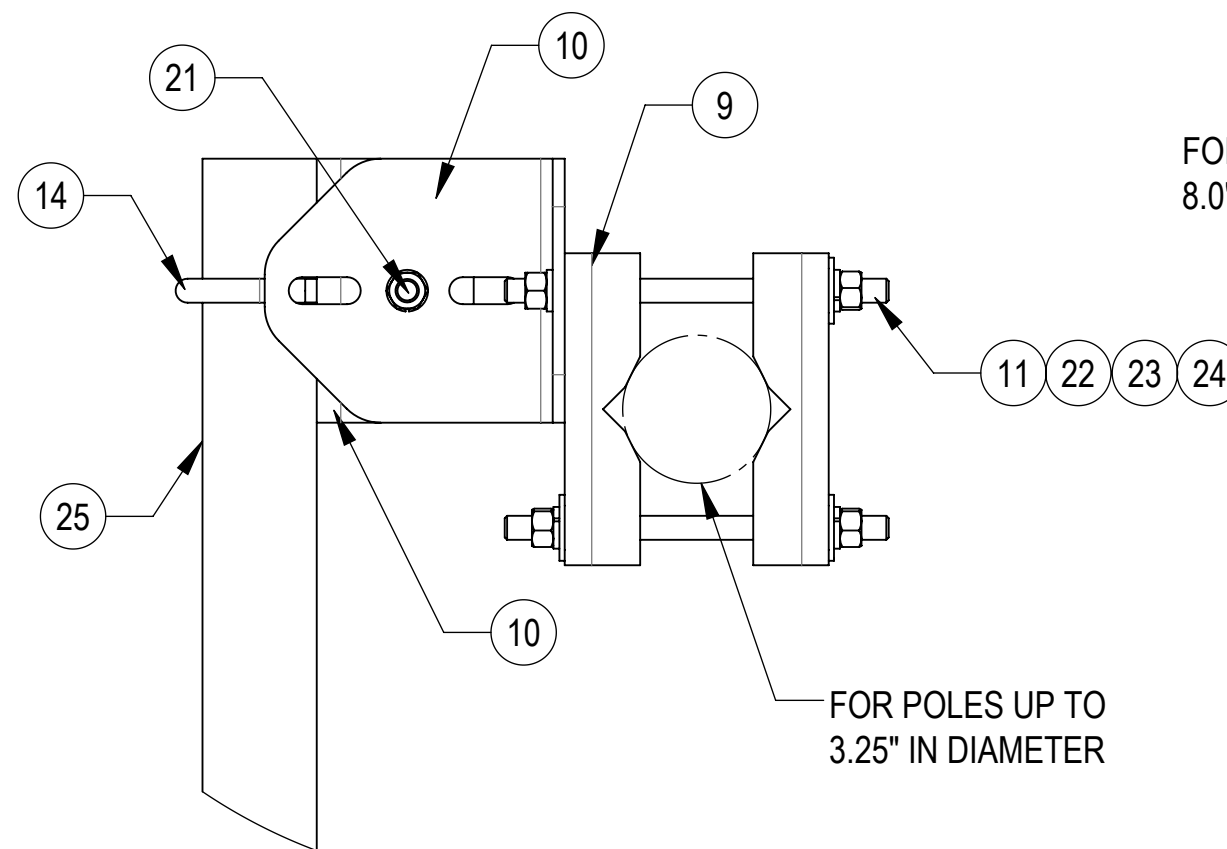
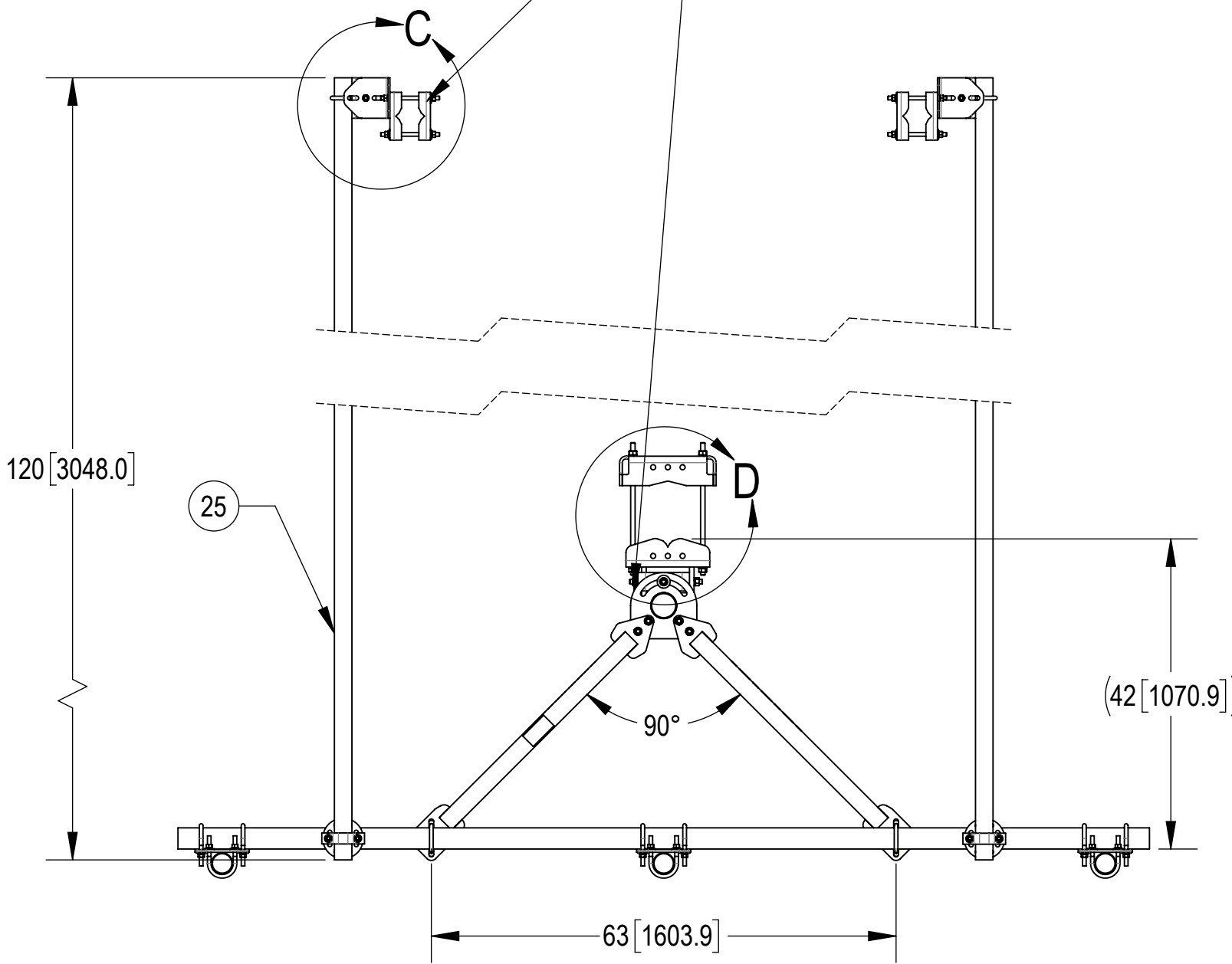
4

3

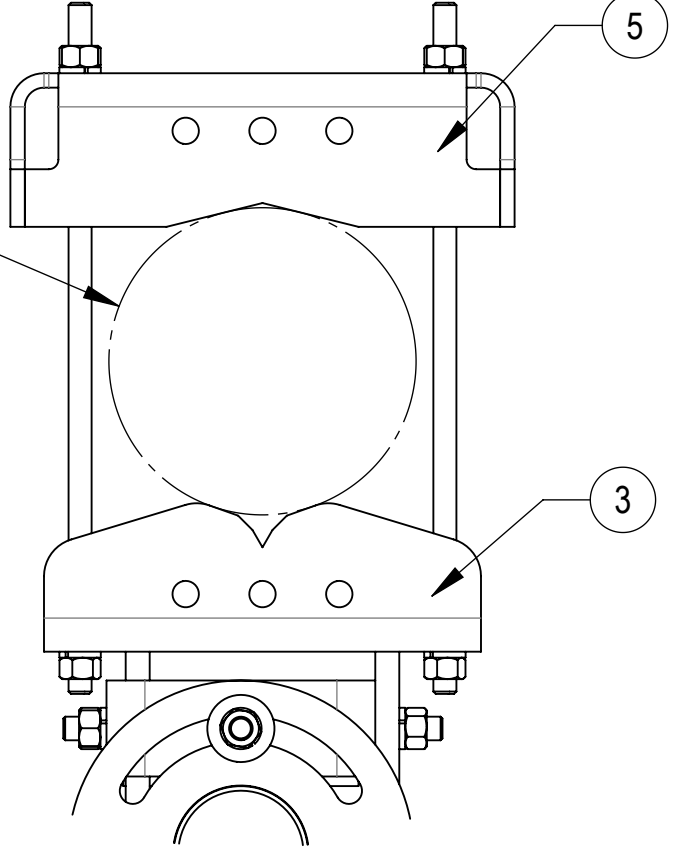
2

1

TIEBACK MUST BE CONNECTED TO A RIGID MEMBER THAT PROVIDES ADEQUATE SUPPORT WITHIN THE LIMITS NOTED IN THE TIEBACK ANGLE RANGE DETAIL. UNLESS APPROVED BY ENGINEER OF RECORD. SPINE STEM OF NEIGHBORING MOUNT IS ACCEPTABLE.



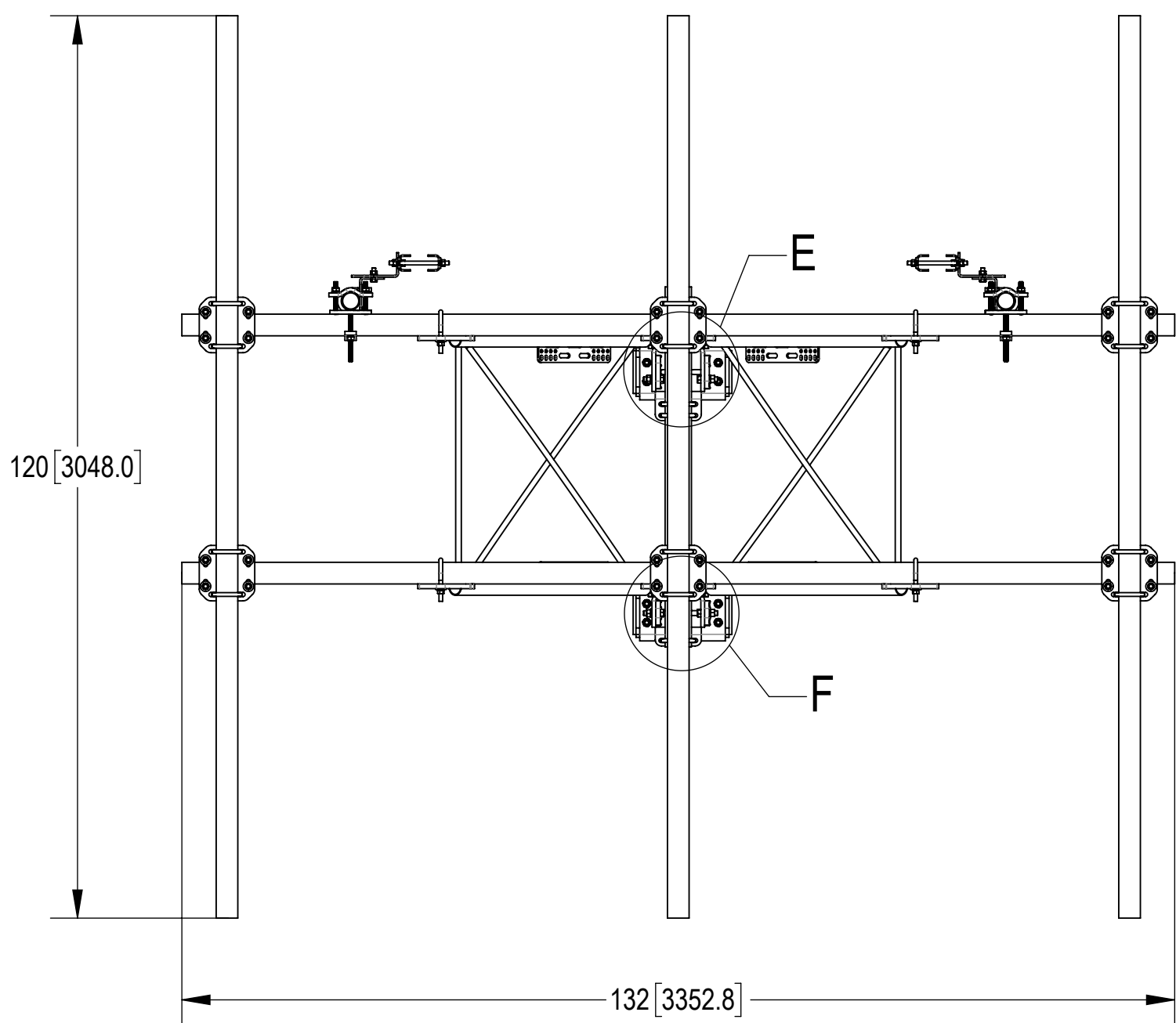
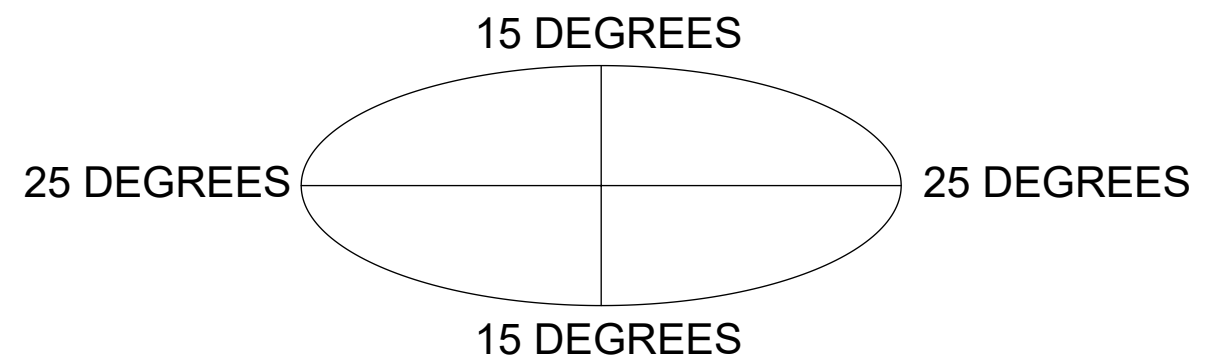
DETAIL C  
SCALE 1 : 4



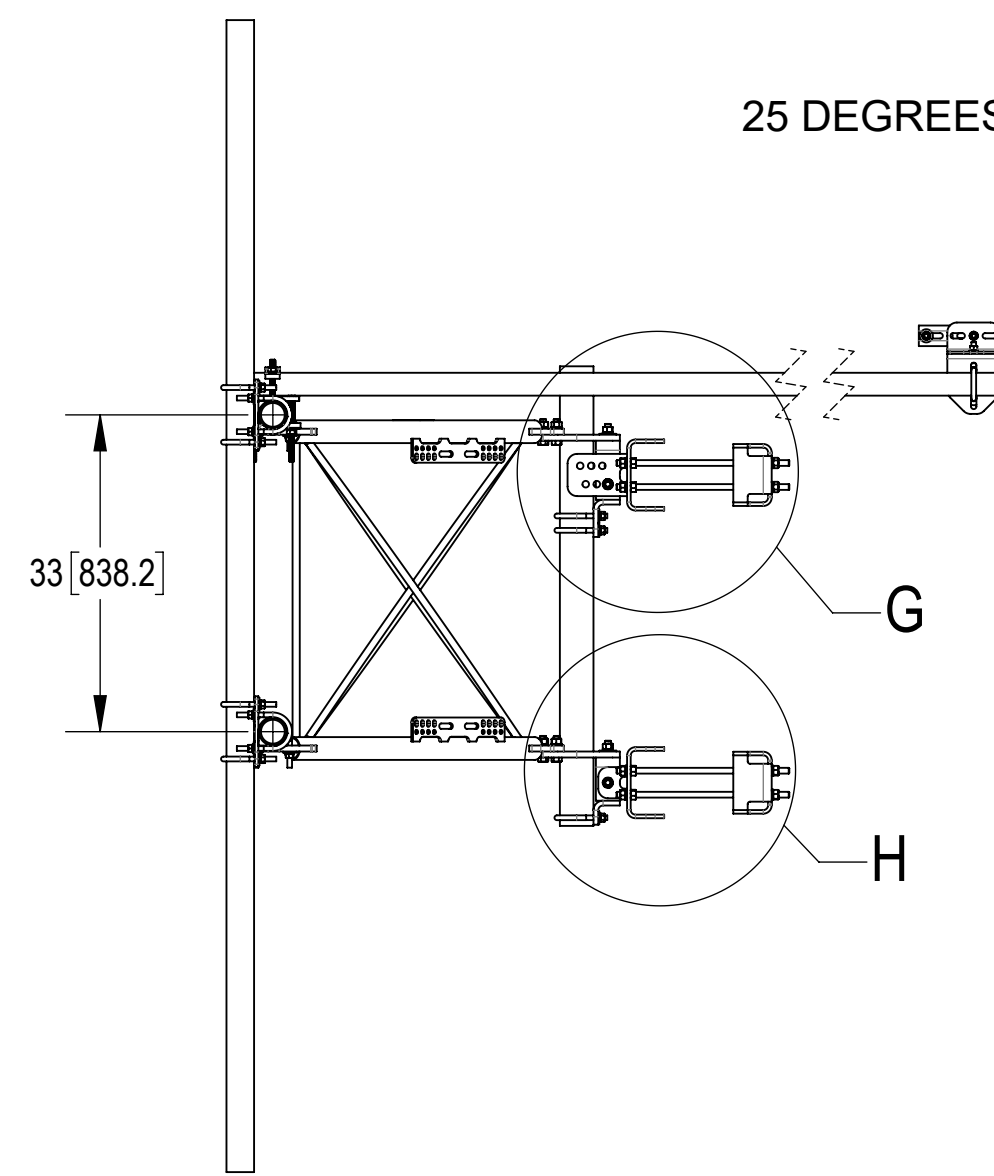
DETAIL D  
SCALE 1 : 5

**ALLOWABLE TIEBACK ANGLE**

± 15 DEGREES VERTICAL  
± 25 DEGREES HORIZONTAL



TOP  
↓  
BOTTOM



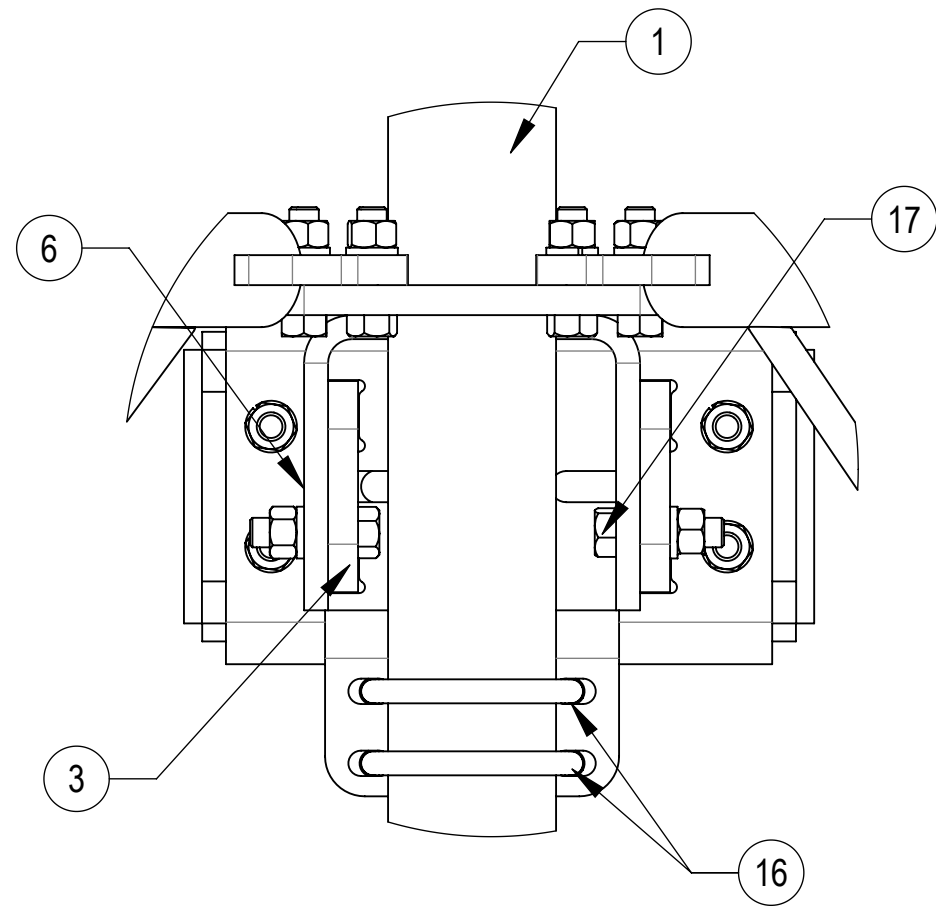
COMMSCOPE, INC. OF NORTH CAROLINA				
TITLE PG,SF,11'FP,(3)120"AP				
SIZE <b>C</b>	SCALE <b>1:20</b>	DOCUMENT NO. <b>SFG22HDX-11-3-120</b>		
		DRAWING		SHEET
		VERSION	STATUS	REVISION
		01	RE	B
				SHEET 3 OF 7

4

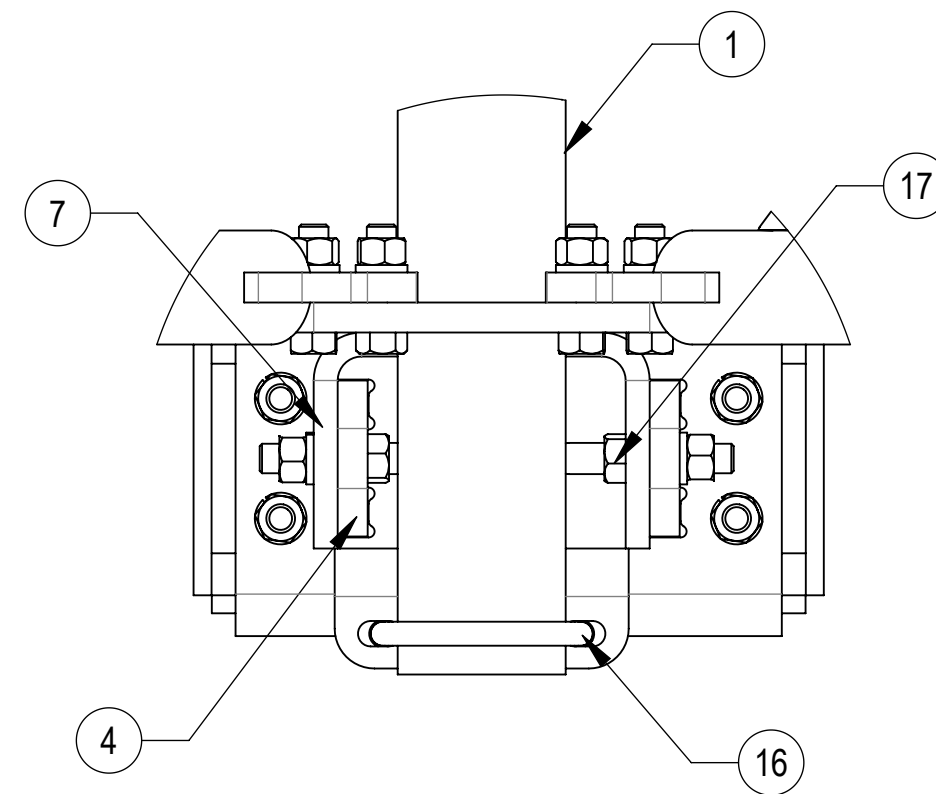
3

2

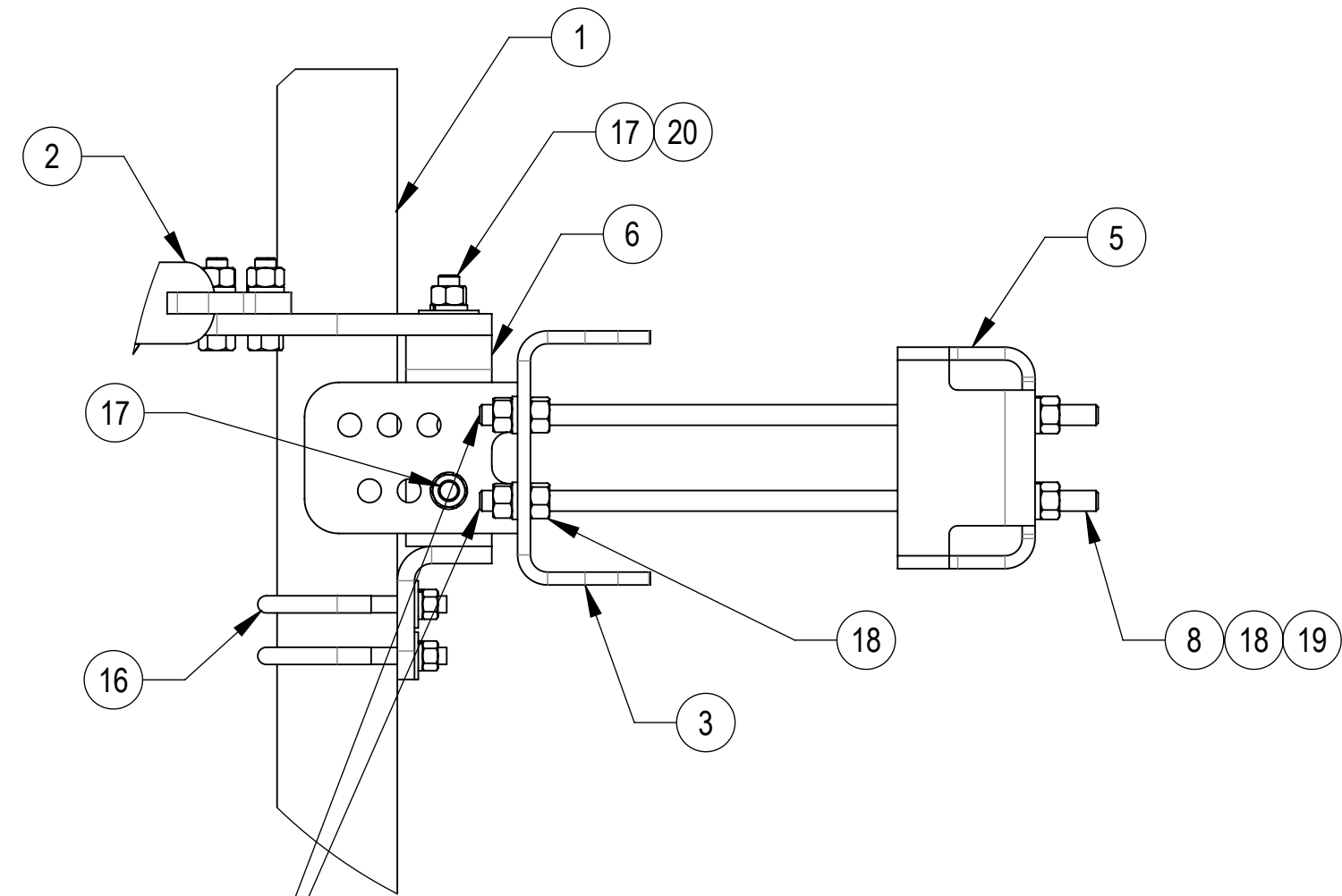
1



**DETAIL E**  
SCALE 1 : 4

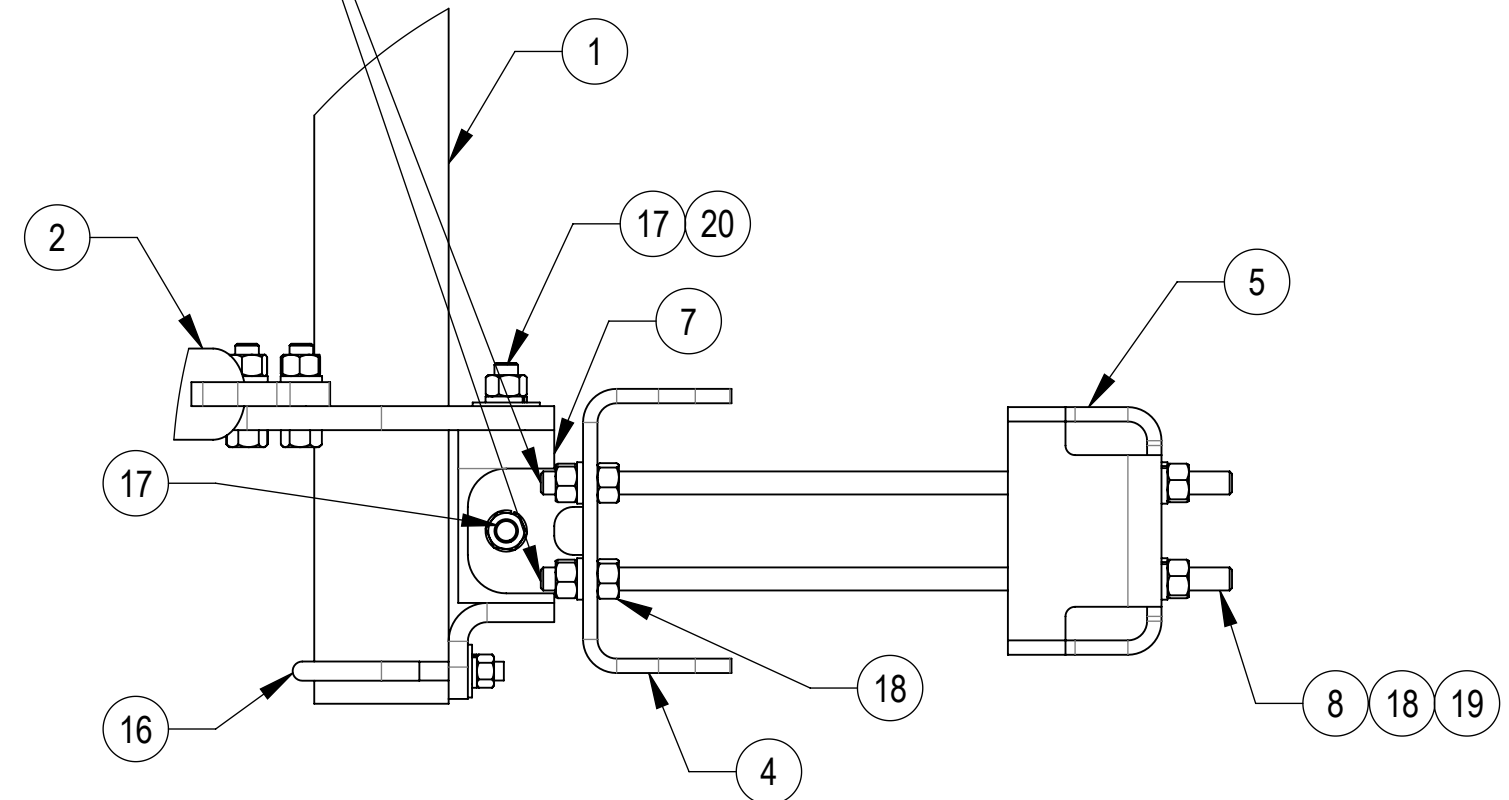


**DETAIL F**  
SCALE 1 : 4


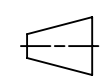


**DETAIL G**  
SCALE 1 : 5

THE THREADED ROD CAN ONLY EXPOSE 4 TO 7 THREADS ON ONE SIDE OF THE BRACKET, WHICH IS TO PREVENT INTERFERENCE WITH THE SIDE BOLTS



**DETAIL H**  
SCALE 1 : 5

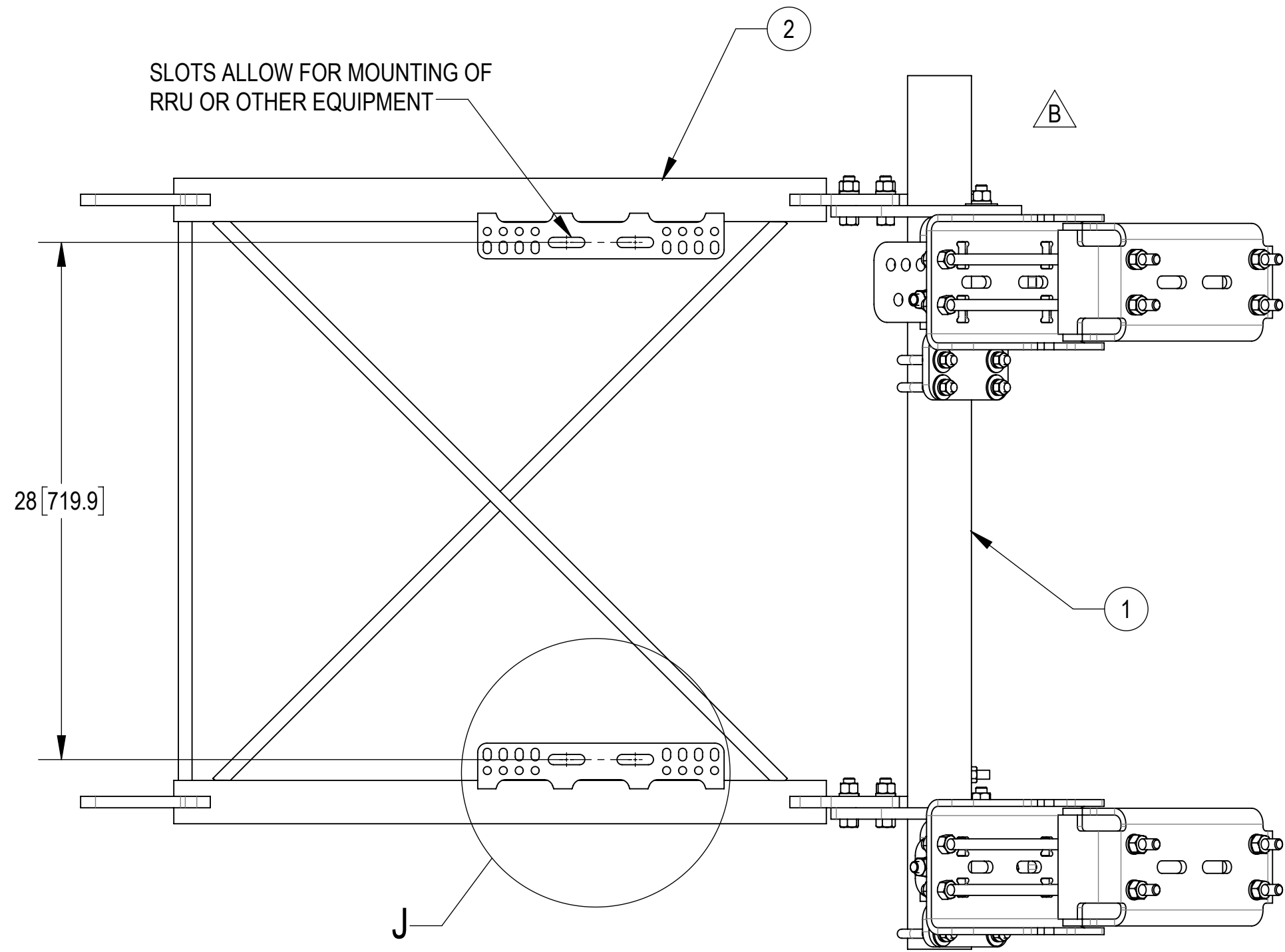
COMMSCOPE, INC. OF NORTH CAROLINA					
TITLE PG,SF,11"FP,(3)120"AP					
SIZE <b>C</b>	SCALE <b>1:20</b>	DOCUMENT NO. SFG22HDX-11-3-120			
 		DRAWING			SHEET 4 OF 7
		VERSION 01	STATUS RE	REVISION B	

4

3

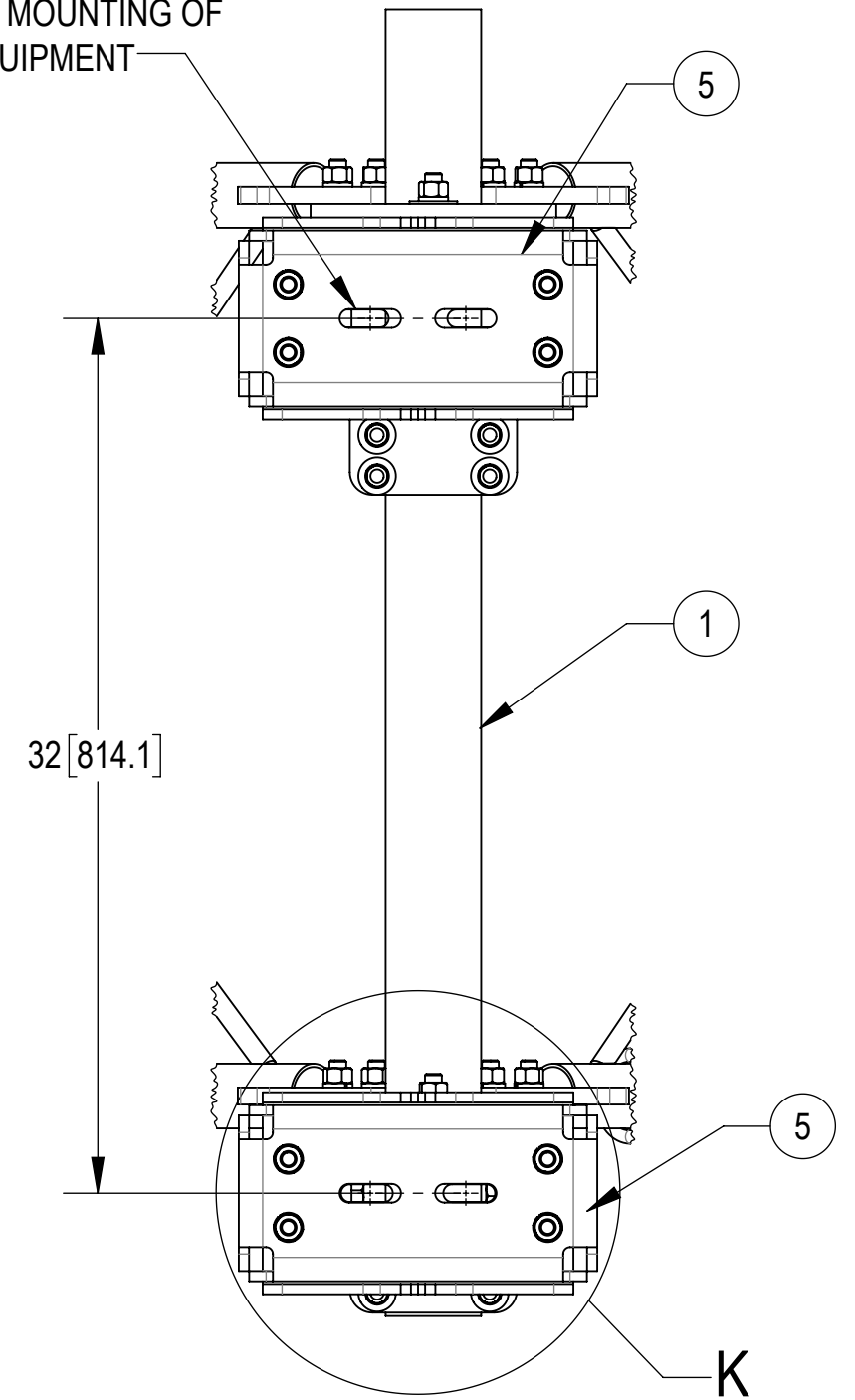
2

1

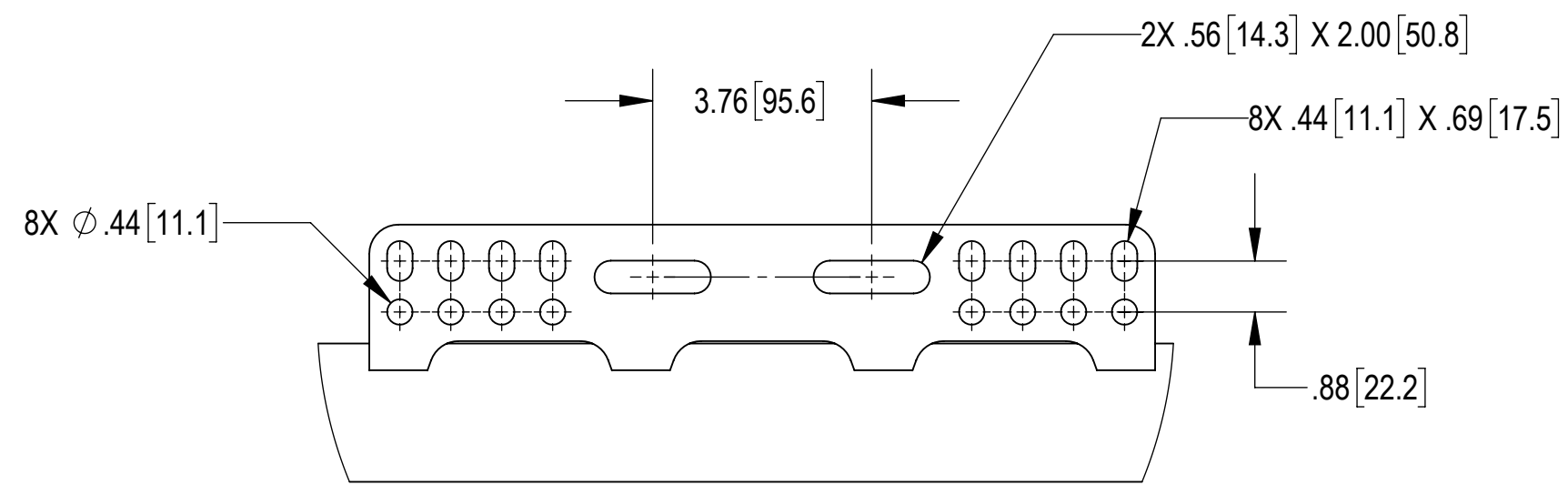


SIDE VIEW

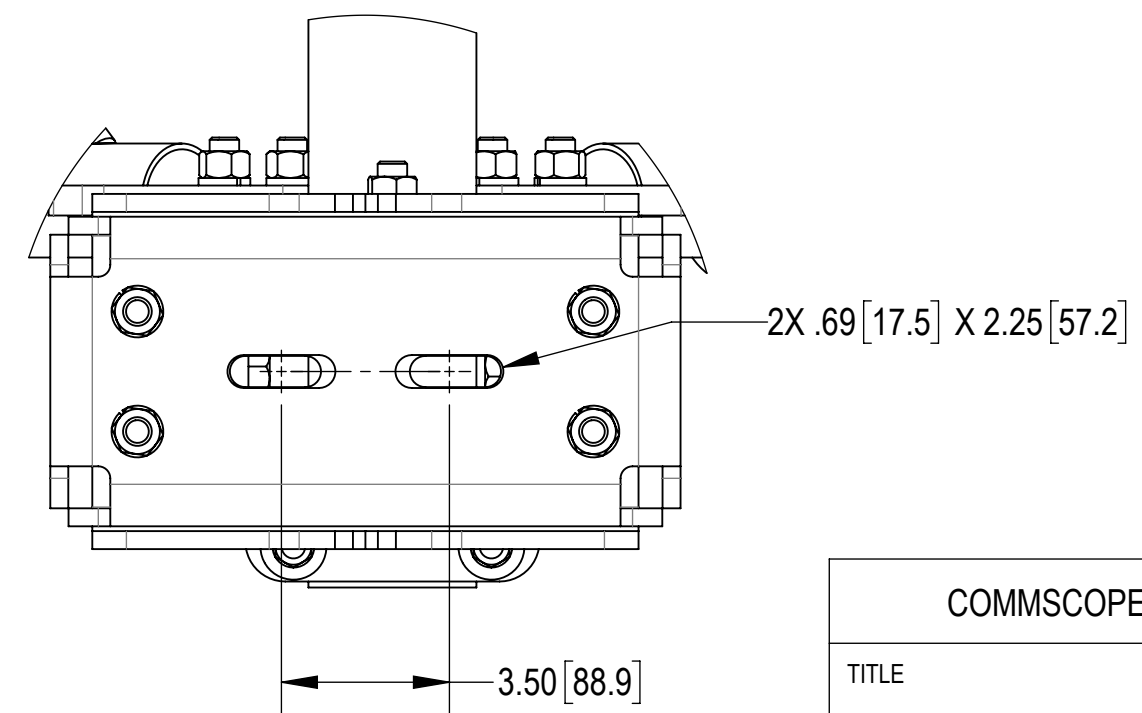
SLOTS ALLOW FOR MOUNTING OF RRU OR OTHER EQUIPMENT



BACK CROP VIEW



DETAIL J  
SCALE 1 : 3



DETAIL K  
SCALE 1 : 4

COMMSCOPE, INC. OF NORTH CAROLINA				
TITLE PG,SF,11"FP,(3)120"AP				
SIZE <b>C</b>	SCALE <b>1:6</b>	DOCUMENT NO. SFG22HDX-11-3-120		
		DRAWING		SHEET
		VERSION	STATUS	REVISION
		01	RE	B
				SHEET 5 OF 7

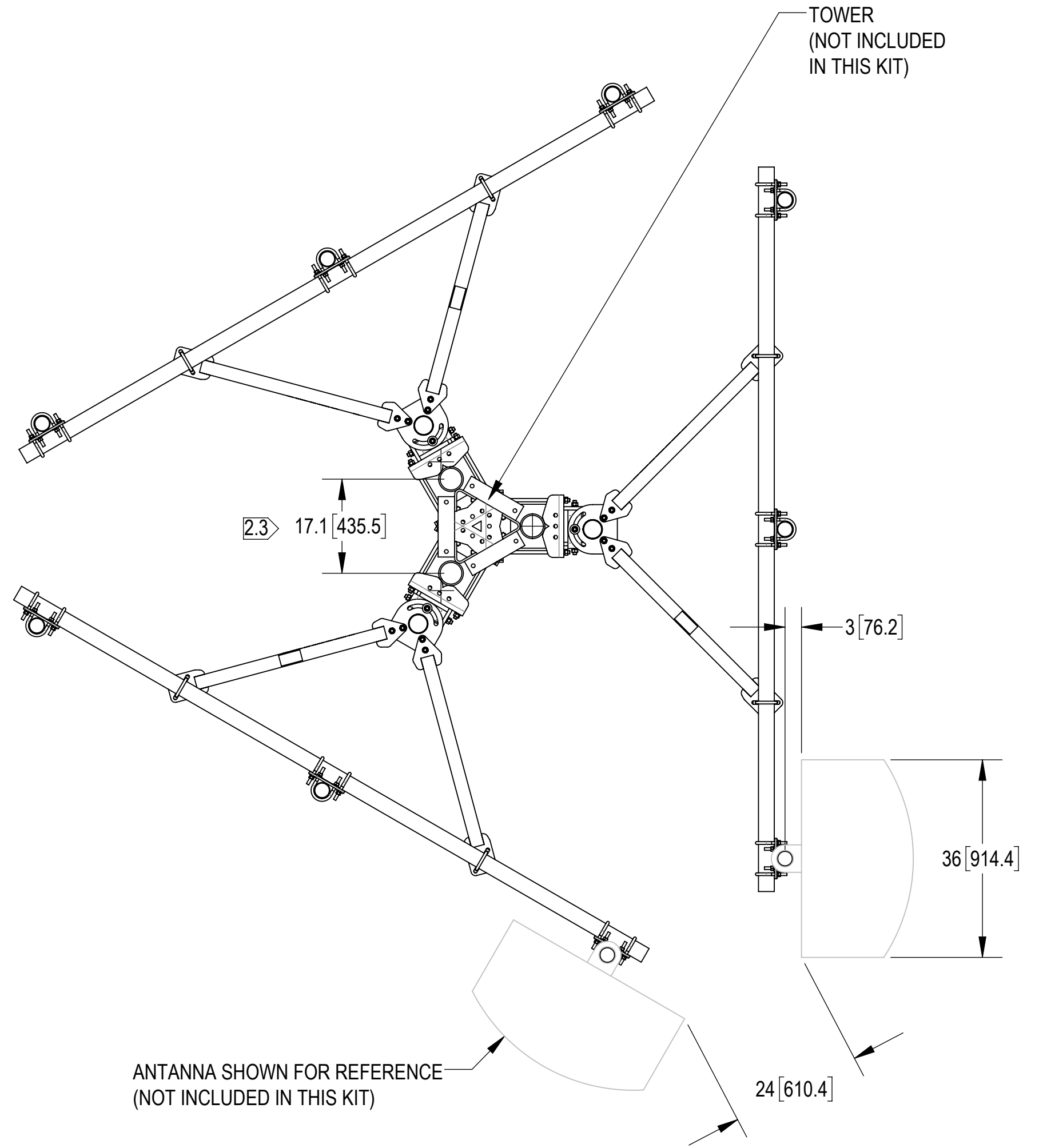
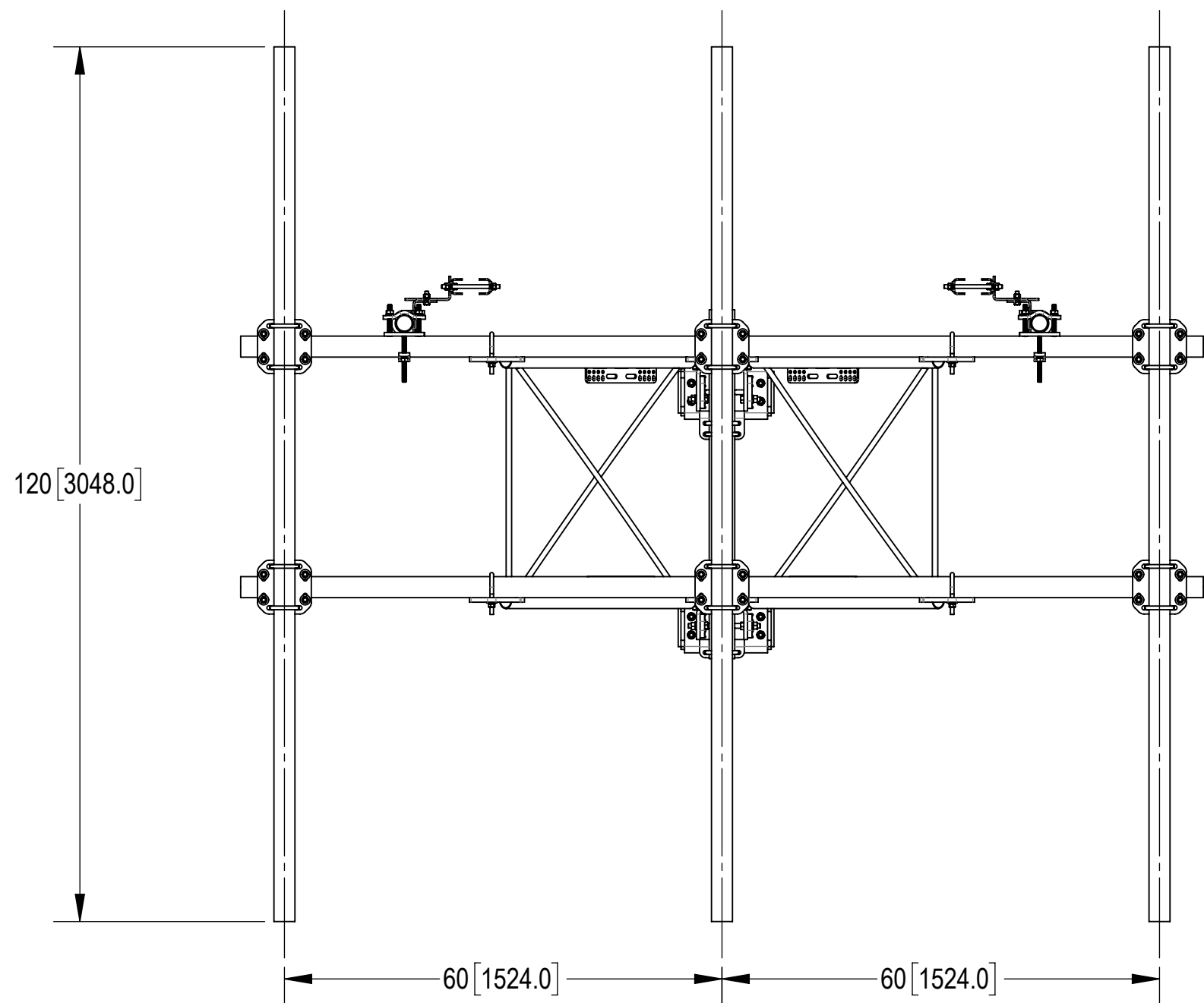
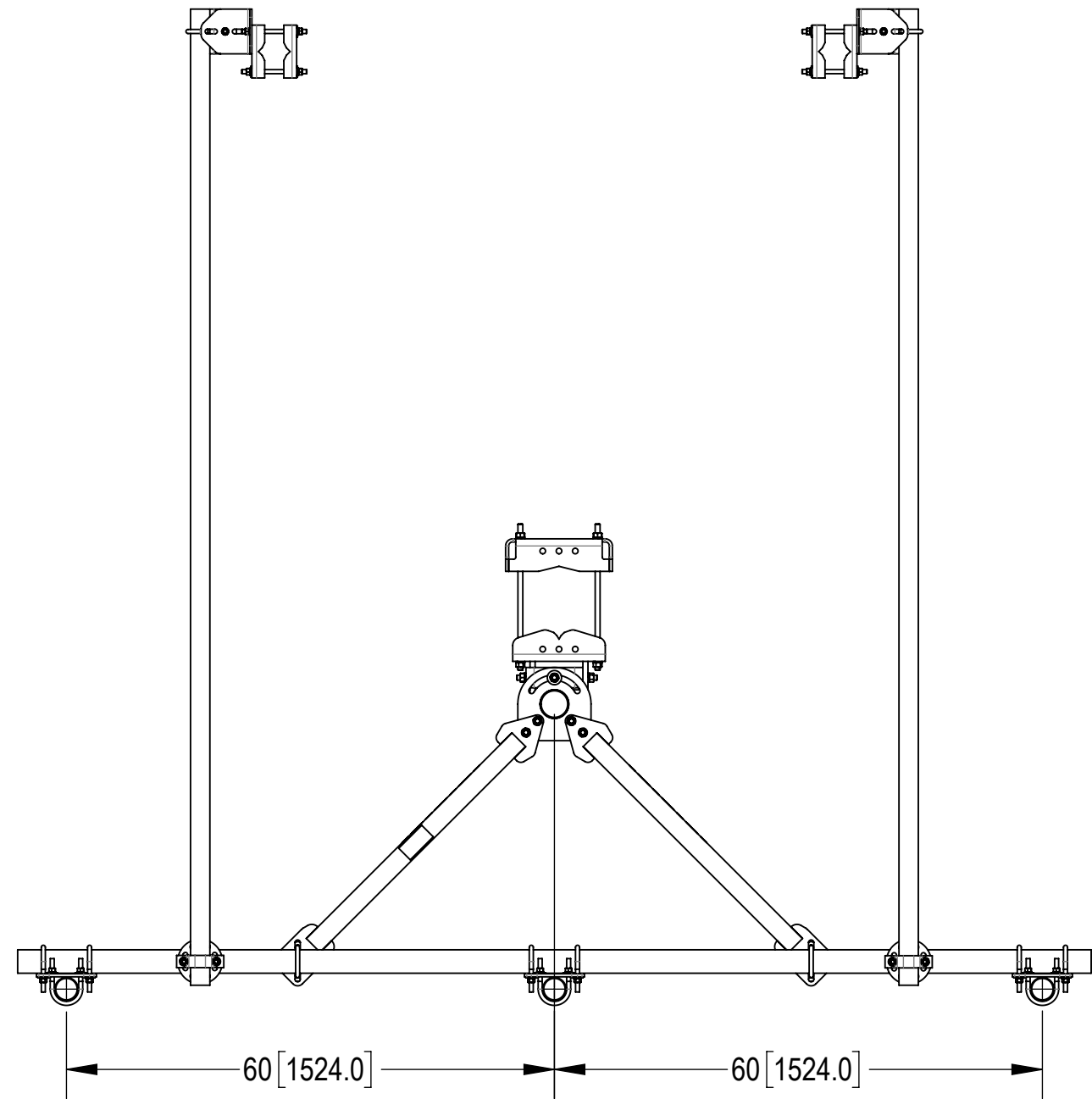
4

3

2

1

# ANTENNA SPACING SHOWN



INSTALLED ON STANDARD TOWER SHOWN

COMMSCOPE, INC. OF NORTH CAROLINA				
TITLE PG,SF,11"FP,(3)120"AP				
SIZE <b>C</b>	SCALE <b>1:6</b>	DOCUMENT NO. SFG22HDX-11-3-120		
		DRAWING		SHEET
		VERSION	STATUS	REVISION
		01	RE	B
				SHEET 6 OF 7

4

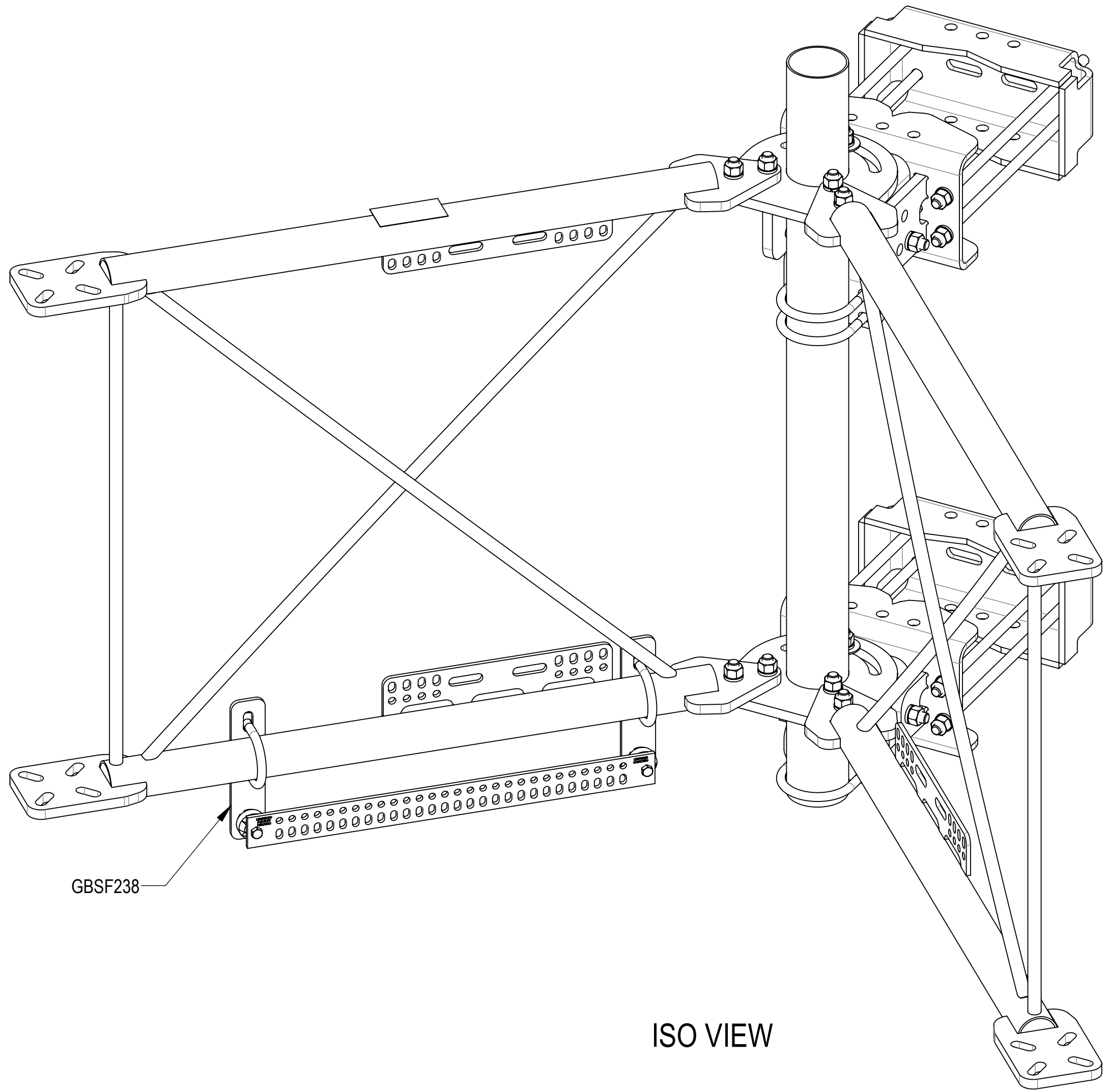
3

2

1

**OPTIONAL ACCESSORIES:**

BUS BAR MOUNT KIT GBSF238 IS WELL SUITED TO BE USED SHOULD THE NEED ARISE  
NOTE THAT THIS KIT DOES NOT INCLUDE THE ISOLATORS OR BUS BAR



GBSF238

ISO VIEW

COMMSCOPE, INC. OF NORTH CAROLINA				
TITLE PG,SF,11"FP,(3)120"AP				
SIZE <b>C</b>	SCALE <b>1:6</b>	DOCUMENT NO. SFG22HDX-11-3-120		
		DRAWING		SHEET 7 OF 7
		VERSION 01	STATUS RE	

4

3

2

1

D

D

C

C

B

B

A

A