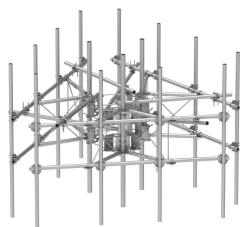


# MCG22RHDx-11M9120



G22RHDx Monopole Sector Frame with spine extension for RRU Mounting, 11 ft x 2.88 in OD face pipes. includes nine 2.88 OD x 120 in antenna pipes

- Extended spine for MCG22 RHDx mounts that decrease PIM from radio relocation
- Increased versatility and stability
- Updated frame provides higher loading
- More RRU mounting available, reducing need for additional mounts
- Better load management
- Less structure stress
- Can be used in combination with APEX RRU mounts

## Product Classification

Product Type	High capacity monopole sector frame
Product Brand	PIM-guard
Product Series	G2

## General Specifications

Mounting	Monopole, 381–1270 mm (15–50 in) OD
Pipe, quantity	9
Sectors, quantity	3

## Dimensions

Face Width	3.353 m   11 ft
Width	3,352.8 mm   132 in
Pipe Length	3,048 mm   120 in
Face Support Pipe Diameter	73.025 mm   2.875 in
Mounting Diameter, maximum	1270 mm   50 in
Mounting Diameter, minimum	381 mm   15 in
Pipe Outer Diameter	73.025 mm   2.875 in
Stand-off Distance	1,066.8 mm   42 in

## Material Specifications

Material Type	Hot dip galvanized steel
---------------	--------------------------

# MCG22RHDX-11M9120

## Mechanical Specifications

Wind Rating	For Specifications, please contact your local ANDREW representative
Wind Rating Test Method	TIA/EIA-222

## Packaging and Weights

Included	Mounting hardware   Plain end pipes (9)   Ring mounts (2)   Sector frames (3)   Stiff arm
Packaging quantity	1
Weight, net	950.544 kg   2,095.59 lb

## Regulatory Compliance/Certifications

Agency	Classification
CHINA-ROHS	Above maximum concentration value
ROHS	Compliant/Exempted
UK-ROHS	Compliant/Exempted



## \* Footnotes

Wind Rating	BWS—Base Wind Speed; FBC—Florida Building Code
-------------	--