

# RRVV-65D-R6D



8-port sector antenna, 4x 694–960, 4x 1695–2180/ 2490–2690 MHz, 65° HPBW , 6x RET

- All Internal RET actuators are connected in “Cascaded SRET” configuration
- Internal SBT on low and high band allow remote RET control from the radio over the RF jumper cable
- Utilize new aerodynamic endcap for wind load optimization

## General Specifications

|                                  |                                                                                  |
|----------------------------------|----------------------------------------------------------------------------------|
| Antenna Type                     | Sector                                                                           |
| Band                             | Multiband                                                                        |
| Color                            | Light Gray (RAL 7035)                                                            |
| Grounding Type                   | RF connector inner conductor and body grounded to reflector and mounting bracket |
| Performance Note                 | Outdoor usage                                                                    |
| Radome Material                  | Fiberglass, UV resistant                                                         |
| Reflector Material               | Aluminum                                                                         |
| RF Connector Interface           | 4.3-10 Female                                                                    |
| RF Connector Location            | Bottom                                                                           |
| RF Connector Quantity, high band | 4                                                                                |
| RF Connector Quantity, low band  | 4                                                                                |
| RF Connector Quantity, total     | 8                                                                                |

## Remote Electrical Tilt (RET) Information

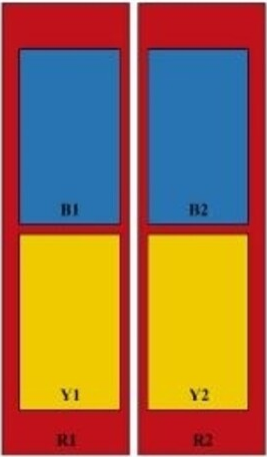
|                                          |                                   |
|------------------------------------------|-----------------------------------|
| RET Hardware                             | CommRET v2                        |
| RET Interface                            | 8-pin DIN Female   8-pin DIN Male |
| RET Interface, quantity                  | 2 female   2 male                 |
| Input Voltage                            | 10–30 Vdc                         |
| Internal Bias Tee                        | Port 1   Port 5                   |
| Internal RET                             | High band (4)   Low band (2)      |
| Power Consumption, active state, maximum | 8 W                               |
| Power Consumption, idle state, maximum   | 1 W                               |
| Protocol                                 | 3GPP/AISG 2.0                     |

# RRVV-65D-R6D

## Dimensions

|                          |                      |
|--------------------------|----------------------|
| Width                    | 498 mm   19.606 in   |
| Depth                    | 197 mm   7.756 in    |
| Length                   | 2688 mm   105.827 in |
| Net Weight, antenna only | 52 kg   114.64 lb    |

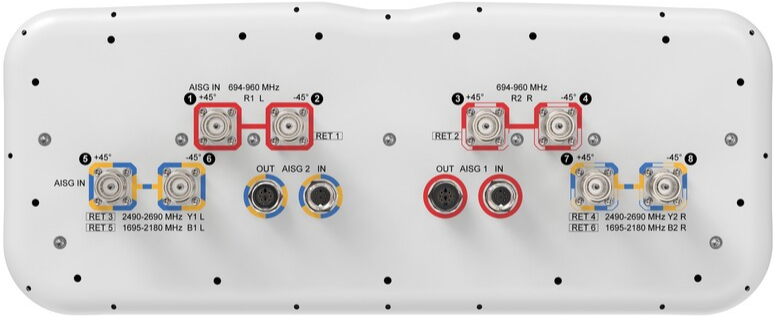
## Array Layout



| Array ID | Frequency (MHz) | RF Connector | RET<br>(SRET) | AISG No. | AISG RET UID     |
|----------|-----------------|--------------|---------------|----------|------------------|
| R1       | 694-960         | 1 - 2        | 1             | AISG1    | CPxxxxxxxxxxxxR1 |
| R2       | 694-960         | 3 - 4        | 2             | AISG1    | CPxxxxxxxxxxxxR2 |
| Y1       | 2490-2690       | 5 - 6        | 3             | AISG2    | CPxxxxxxxxxxxxY1 |
| Y2       | 2490-2690       | 7 - 8        | 4             | AISG2    | CPxxxxxxxxxxxxY2 |
| B1       | 1695-2180       | 5 - 6        | 5             | AISG2    | CPxxxxxxxxxxxxB1 |
| B2       | 1695-2180       | 7 - 8        | 6             | AISG2    | CPxxxxxxxxxxxxB2 |

[Sizes of colored boxes are not true depictions of array sizes]

## Port Configuration



# RRVV-65D-R6D

## Electrical Specifications

|                          |                                                   |
|--------------------------|---------------------------------------------------|
| Impedance                | 50 ohm                                            |
| Operating Frequency Band | 1695 – 2180 MHz   2490 – 2690 MHz   694 – 960 MHz |
| Polarization             | ±45°                                              |

## Electrical Specifications

|                                              | R1,R2      | R1,R2      | R1,R2      | Y1,Y2,B1,B2 | Y1,Y2,B1,B2 | Y1,Y2,B1,B2 |
|----------------------------------------------|------------|------------|------------|-------------|-------------|-------------|
| Frequency Band, MHz                          | 694–790    | 790–890    | 880–960    | 1695–1920   | 1920–2180   | 2490–2690   |
| RF Port                                      | 1,2,3,4    | 1,2,3,4    | 1,2,3,4    | 5,6,7,8     | 5,6,7,8     | 5,6,7,8     |
| Gain, dBi                                    | 15.7       | 16.1       | 16.6       | 16.5        | 16.6        | 16.4        |
| Beamwidth, Horizontal, degrees               | 77         | 67         | 68         | 58          | 62          | 68          |
| Beamwidth, Vertical, degrees                 | 7.4        | 6.6        | 6.2        | 6.8         | 6.1         | 5.1         |
| Beam Tilt, degrees                           | 1–11       | 1–11       | 1–11       | 0–10        | 0–10        | 0–10        |
| USLS (First Lobe), dB                        | 16         | 16         | 20         | 18          | 18          | 17          |
| Front-to-Back Ratio at 180°, dB              | 29         | 30         | 32         | 34          | 34          | 25          |
| Isolation, Cross Polarization, dB            | 26         | 26         | 26         | 26          | 26          | 26          |
| Isolation, Inter-band, dB                    | 28         | 28         | 28         | 28          | 28          | 28          |
| VSWR   Return loss, dB                       | 1.5   14.0 | 1.5   14.0 | 1.5   14.0 | 1.5   14.0  | 1.5   14.0  | 1.5   14.0  |
| PIM, 3rd Order, 2 x 20 W, dBc                | -150       | -150       | -150       | -150        | -150        | -150        |
| Input Power per Port at 50°C, maximum, watts | 300        | 300        | 300        | 250         | 250         | 200         |

## Packaging and Weights

|                |                      |
|----------------|----------------------|
| Width, packed  | 565 mm   22.244 in   |
| Depth, packed  | 309 mm   12.165 in   |
| Length, packed | 2935 mm   115.551 in |
| Weight, gross  | 72.9 kg   160.717 lb |

## Regulatory Compliance/Certifications

| Agency        | Classification                                                                 |
|---------------|--------------------------------------------------------------------------------|
| ISO 9001:2015 | Designed, manufactured and/or distributed under this quality management system |

# RRVV-65D-R6D

---

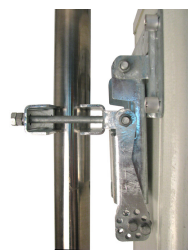
## Included Products

- |           |   |                                                                                                                                                                  |
|-----------|---|------------------------------------------------------------------------------------------------------------------------------------------------------------------|
| BSAMNT-4  | – | Wide Profile Antenna Downtilt Mounting Kit for 2.4 - 4.5 in (60 - 115 mm) OD round members. Kit contains one scissor top bracket set and one bottom bracket set. |
| BSAMNT-M4 | – | Middle Downtilt Mounting Kit for Long Antennas for 2.4 - 4.5 in (60 - 115 mm) OD round members. Kit contains one scissor bracket set.                            |

## \* Footnotes

|                         |                                                                 |
|-------------------------|-----------------------------------------------------------------|
| <b>Performance Note</b> | Severe environmental conditions may degrade optimum performance |
|-------------------------|-----------------------------------------------------------------|

# BSAMNT-4



Wide Profile Antenna Downtilt Mounting Kit for 2.4 - 4.5 in (60 - 115 mm) OD round members. Kit contains one scissor top bracket set and one bottom bracket set.

## Product Classification

**Product Type** Downtilt mounting kit

## General Specifications

**Application** Outdoor

**Color** Silver

## Dimensions

**Compatible Diameter, maximum** 115 mm | 4.528 in

**Compatible Diameter, minimum** 60 mm | 2.362 in

**Weight, net** 6.5 kg | 14.33 lb

## Material Specifications

**Material Type** Galvanized steel

## Packaging and Weights

**Included** Brackets | Hardware

**Packaging quantity** 1

## Regulatory Compliance/Certifications

| Agency        | Classification                                                                                                           |
|---------------|--------------------------------------------------------------------------------------------------------------------------|
| CHINA-ROHS    | Below maximum concentration value                                                                                        |
| ISO 9001:2015 | Designed, manufactured and/or distributed under this quality management system                                           |
| REACH-SVHC    | Compliant as per SVHC revision on <a href="http://www.andrew.com/ProductCompliance">www.andrew.com/ProductCompliance</a> |
| ROHS          | Compliant                                                                                                                |
| UK-ROHS       | Compliant                                                                                                                |



# BSAMNT-M4



Middle Downtilt Mounting Kit for Long Antennas for 2.4 - 4.5 in (60 - 115 mm) OD round members. Kit contains one scissor bracket set.

## Product Classification

**Product Type** Downtilt mounting kit

## General Specifications

**Application** Outdoor

**Color** Silver

## Dimensions

**Compatible Diameter, maximum** 115 mm | 4.528 in

**Compatible Diameter, minimum** 60 mm | 2.362 in

**Weight, net** 4.6 kg | 10.141 lb

## Material Specifications

**Material Type** Galvanized steel

## Packaging and Weights

**Included** Brackets | Hardware

**Packaging quantity** 1

## Regulatory Compliance/Certifications

| Agency        | Classification                                                                                                           |
|---------------|--------------------------------------------------------------------------------------------------------------------------|
| CHINA-ROHS    | Below maximum concentration value                                                                                        |
| ISO 9001:2015 | Designed, manufactured and/or distributed under this quality management system                                           |
| REACH-SVHC    | Compliant as per SVHC revision on <a href="http://www.andrew.com/ProductCompliance">www.andrew.com/ProductCompliance</a> |
| ROHS          | Compliant                                                                                                                |
| UK-ROHS       | Compliant                                                                                                                |

