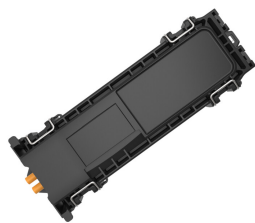


# SRC1-U5A1B1BANLO



NOVUX™ Specialty Range Closure 50, splice only, no adapters, no splitters, 12 splices, SMOUV® 45mm splice protectors, black, 2x NVX-CR-MC-RD-NN cable retention

- Modern drop solution offering providers the agility and flexibility to use it in last-mile fiber network applications, both above and below ground
- Protected from harsh conditions by CommScope’s Octopus gel sealing technology
- Agnostic to connectivity technologies: splice, connector, field-installable connector for agility and flexibility
- Identification plate for either QR code or customer logo
- QR code and CommScope cTrak® app for one-click access to all product information

## Product Classification

Regional Availability	Asia   EMEA   Latin America
Regional Availability Note	Contact your local CommScope representative for specific availability
Product Type	Single-ended, rectangular fiber closure
Product Brand	NOVUX™
Product Series	SRC50

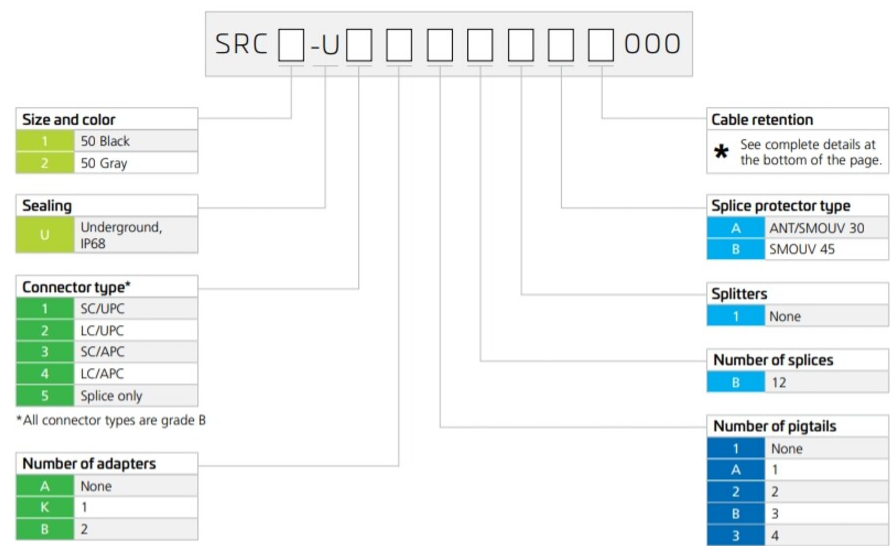
## General Specifications




Cable Capacity, Drop	2 Flat 8.0 x 4.5 mm (0.30 x 0.17 in)   2 Round 1.2–8.0 mm (0.05–0.31 in)
Cable Ports Quantity, total	2 multi-out ports (4 cables)
Cable Sealing Type	Compressed gel
Cable Termination Attachments, quantity	2
Closure Sealing Type	Hinged with latch
Closure Style	Single-ended
Color	Black
Mounting	Handhole   Pedestal   Wall/Pole Mount, mounting kit included
Network Area Type	Drop
Port Type	No adapter   No adapter
Port, quantity	0
Splice Tray Included, quantity	1
Splice Tray Type Included	12-way, heat shrink
Splicing Capacity, maximum	12

# SRC1-U5A1B1BANLO

Splicing Capacity, Single Fusion, maximum	12
Splicing Type, Supported	Single fusion
Split Ratio	Symmetrical
Splitter Type	No splitter
Splitter, quantity	0
Dimensions	
Height	267 mm   10.512 in
Width	87 mm   3.425 in
Depth	49 mm   1.929 in
Cable Entry Drop Port Diameter	8 mm (0.31 in) mm

## Ordering Tree



<div>Cable retention<sup>a</sup></div> <div><div>A</div><div>None</div></div> <div><div>B</div><div>NVX-CR-MC-FT-NN</div></div> <div><div>C</div><div>NVX-CR-MC-RD-NN</div></div> <div><div>D</div><div>NVX-CR-SA-SM-NN</div></div> <div><div>E</div><div>NVX-CR-TI-SM-NN</div></div> <div><div>F</div><div>NVX-CR-DU-FL-NN</div></div>	<div>Cable Termination Unit (CTU) options</div> <div><div>B</div><div></div><div>NVX-CR-MC-FT-NN</div><div><ul style="list-style-type: none"><li>Flat cable</li><li>Metal clip</li><li>Range 3 x 5 to 4 x 8 mm</li></ul></div></div> <div><div>C</div><div></div><div>NVX-CR-MC-RD-NN</div><div><ul style="list-style-type: none"><li>Round cable</li><li>Metal clip</li><li>Range 4 to 6.2 mm</li></ul></div></div> <div><div>D</div><div></div><div>NVX-CR-SA-SM-NN</div><div><ul style="list-style-type: none"><li>Round cable</li><li>Dia up to 8 mm</li><li>Strength member</li><li>Aramid yarns</li><li>Single layer</li></ul></div></div> <div><div>E</div><div></div><div>NVX-CR-TI-SM-NN</div><div><ul style="list-style-type: none"><li>Round cable</li><li>Dia up to 8 mm</li><li>Aramid yarns</li><li>Single layer</li></ul></div></div> <div><div>F</div><div></div><div>NVX-CR-DU-FL-NN</div><div><ul style="list-style-type: none"><li>Round cable</li><li>Dia up to 6.2 mm</li><li>Aramid yarns</li><li>Dual layer</li><li>Compact length</li></ul></div></div>
---	--

<sup>a</sup> 2 cable attachments are supplied.

# SRC1-U5A1B1BANL0

---

## Material Specifications

**Material Type** Impact-resistant polymer

## Optical Specifications

**Fiber Type** G.657.A1 | G.657.A2 | G.657.B3

## Environmental Specifications

**Operating Temperature** -40 °C to +70 °C (-40 °F to +158 °F)

**Environmental Space** Above ground | Below ground | Direct burial

**Qualification Standards** IEC 60529, IP68 + 2 m waterhead | IEC 61753-1, category G

**UV Resistance** UV stabilized

**Water Resistance** Flash test valve at 2 psi (20 kPa)

## Packaging and Weights

**Packaging quantity** 10

**Packaging Type** Box | Carton