

12P-4L8M-A6-V7



12-port sector antenna, 4x 694–960 and 8x 1695–2690 MHz, 65° HPBW, 6x RET

- 2L4H band arrays are perfectly symmetrical inside the antenna ensuring pattern consistency across ports & provides capability for 4T4R (4x MIMO) on Low band and High band
- Symmetrical Low & High band arrays with consistent electrical performance
- Antenna with integrated pluggable RET

General Specifications

Antenna Type	Sector
Band	Multiband
Color	Light Gray (RAL 7035)
Grounding Type	RF connector inner conductor and body grounded to reflector and mounting bracket
Performance Note	Outdoor usage
Radome Material	Fiberglass, UV resistant
Radiator Material	Low loss circuit board
Reflector Material	Aluminum
RF Connector Interface	7-16 DIN Female
RF Connector Location	Bottom
RF Connector Quantity, mid band	8
RF Connector Quantity, low band	4
RF Connector Quantity, total	12

Remote Electrical Tilt (RET) Information

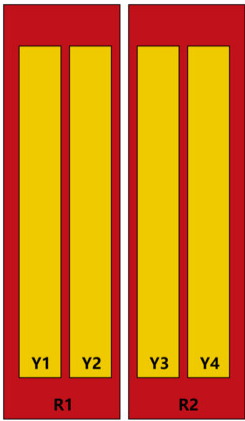
RET Hardware	CommRET v2
RET Interface	8-pin DIN Female 8-pin DIN Male
RET Interface, quantity	1 female 1 male
Input Voltage	10–30 Vdc
Internal RET	Low band (1) Mid band (1)
Power Consumption, active state, maximum	10 W
Power Consumption, idle state, maximum	2 W
Protocol	3GPP/AISG 2.0 (Single RET)

12P-4L8M-A6-V7

Dimensions

Width	499 mm 19.646 in
Depth	199 mm 7.835 in
Length	1490 mm 58.661 in
Net Weight, antenna only	20.7 kg 45.636 lb

Array Layout



Array ID	Frequency (MHz)	RF Connector	HPBW	RET (SRET)	AISG No.	RET UID
R1	694-960	1 - 2	65°	1	AISG1	CPxxxxxxxxxxxxxxxxR1
R2	694-960	3 - 4	65°	2	AISG1	CPxxxxxxxxxxxxxxxxR2
Y1	1695-2690	5 - 6	65°	3	AISG1	CPxxxxxxxxxxxxxxxxY1
Y2	1695-2690	7 - 8	65°	4	AISG1	CPxxxxxxxxxxxxxxxxY2
Y3	1695-2690	9 - 10	65°	5	AISG1	CPxxxxxxxxxxxxxxxxY3
Y4	1695-2690	11 - 12	65°	6	AISG1	CPxxxxxxxxxxxxxxxxY4

(Sizes of colored boxes are not true depictions of array sizes)

Port Configuration



12P-4L8M-A6-V7

Electrical Specifications

Impedance	50 ohm
Operating Frequency Band	1695 – 2690 MHz 694 – 960 MHz
Polarization	±45°
Total Input Power, maximum	1,000 W

Electrical Specifications

	R1,R2	R1,R2	R1,R2	Y1-Y4	Y1-Y4	Y1-Y4	Y1-Y4	Y1-Y4
Frequency Band, MHz	694–806	790–896	880–960	1695–1880	1850–1990	1920–2200	2300–2490	2500–2690
RF Port	1-4	1-4	1-4	5-12	5-12	5-12	5-12	5-12
Gain, dBi	14.8	14.9	15.2	17.1	17.3	17.8	18.2	18.3
Beamwidth, Horizontal, degrees	63	60	58	69	67	66	60	57
Beamwidth, Vertical, degrees	11	9.8	9	6.2	5.9	5.6	4.8	4.1
Beam Tilt, degrees	2–12	2–12	2–12	2–12	2–12	2–12	2–12	2–12
USLS (First Lobe), dB	16	16	16	16	16	16	16	16
Front-to-Back Ratio, Copolarization 180° ± 30°, dB	25	25	25	25	25	25	25	25
Isolation, Cross Polarization, dB	25	25	25	25	25	25	25	25
Isolation, Inter-band, dB	25	25	25	25	25	25	25	25
VSWR Return loss, dB	1.5 14.0	1.5 14.0	1.5 14.0	1.5 14.0	1.5 14.0	1.5 14.0	1.5 14.0	1.5 14.0
PIM, 3rd Order, 2 x 20 W, dBc	-150	-150	-150	-150	-150	-150	-150	-150
Input Power per Port, maximum, watts	250	250	250	200	200	200	200	200

Electrical Specifications, BASTA

	694–806	790–896	880–960	1695–1880	1850–1990	1920–2200	2300–2490	2500–2690
Frequency Band, MHz	694–806	790–896	880–960	1695–1880	1850–1990	1920–2200	2300–2490	2500–2690
Gain by all Beam Tilts, average, dBi	14.6	14.8	15	16.9	17.2	17.5	17.8	18
Gain by all Beam Tilts Tolerance, dB	±0.6	±0.4	±0.2	±0.7	±0.5	±0.6	±0.4	±0.7
Beamwidth, Horizontal Tolerance, degrees	±5	±4	±5	±7	±4	±6	±5	±7
Beamwidth, Vertical Tolerance, degrees	±1.1	±1	±0.7	±0.4	±0.3	±0.5	±0.3	±0.2
CPR at Boresight, dB	19	19	19	19	19	19	19	19

12P-4L8M-A6-V7

Mechanical Specifications

Wind Loading @ Velocity, frontal	422.0 N @ 150 km/h (94.9 lbf @ 150 km/h)
Wind Loading @ Velocity, lateral	197.0 N @ 150 km/h (44.3 lbf @ 150 km/h)
Wind Loading @ Velocity, rear	748.0 N @ 150 km/h (168.2 lbf @ 150 km/h)
Wind Speed, maximum	200 km/h (124 mph)

Packaging and Weights

Width, packed	574 mm 22.598 in
Depth, packed	274 mm 10.787 in
Length, packed	1670 mm 65.748 in
Weight, gross	29 kg 63.934 lb

Regulatory Compliance/Certifications

Agency	Classification
ISO 9001:2015	Designed, manufactured and/or distributed under this quality management system
UK-ROHS	Compliant

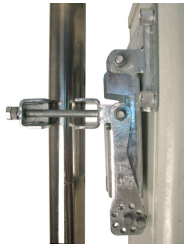
Included Products

BSAMNT-B95-01	-	Wide Profile Antenna Downtilt Mounting Kit for 2.4 - 4.5 in (60 - 115 mm) OD round members. Kit contains one scissor top bracket set and one bottom bracket set.
---------------	---	--

* Footnotes

Performance Note	Severe environmental conditions may degrade optimum performance
-------------------------	---

BSAMNT-B95-01



Wide Profile Antenna Downtilt Mounting Kit for 2.4 - 4.5 in (60 - 115 mm) OD round members. Kit contains one scissor top bracket set and one bottom bracket set.

Product Classification

Product Type Downtilt mounting kit

General Specifications

Application Outdoor

Color Silver

Dimensions

Compatible Diameter, maximum 115 mm | 4.528 in

Compatible Diameter, minimum 61 mm | 2.402 in

Material Specifications

Material Type Galvanized steel

Packaging and Weights

Included Brackets | Hardware

Packaging quantity 2

Weight, gross 3.6 kg | 7.937 lb

Regulatory Compliance/Certifications

Agency

CE
ISO 9001:2015

Classification

Compliant with the relevant CE product directives
Designed, manufactured and/or distributed under this quality management system

