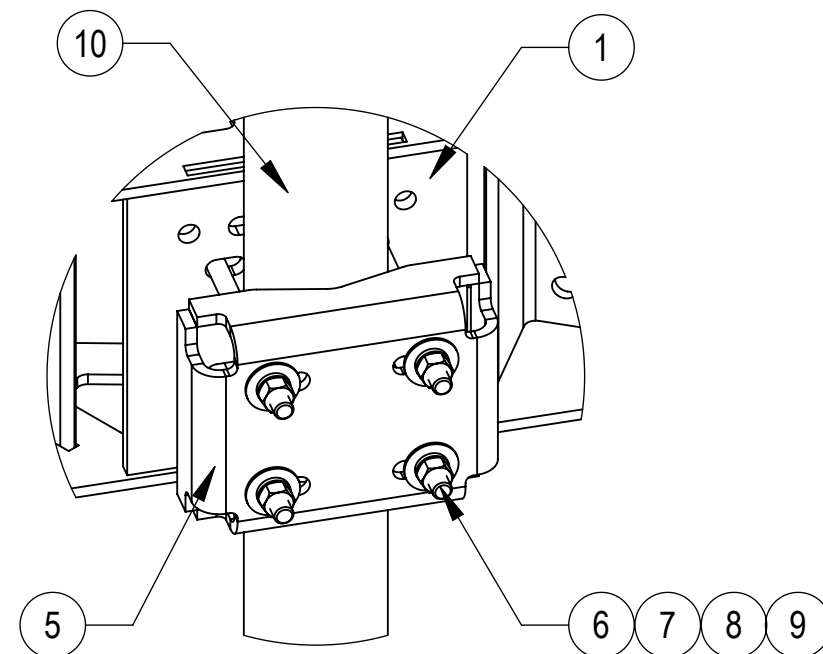
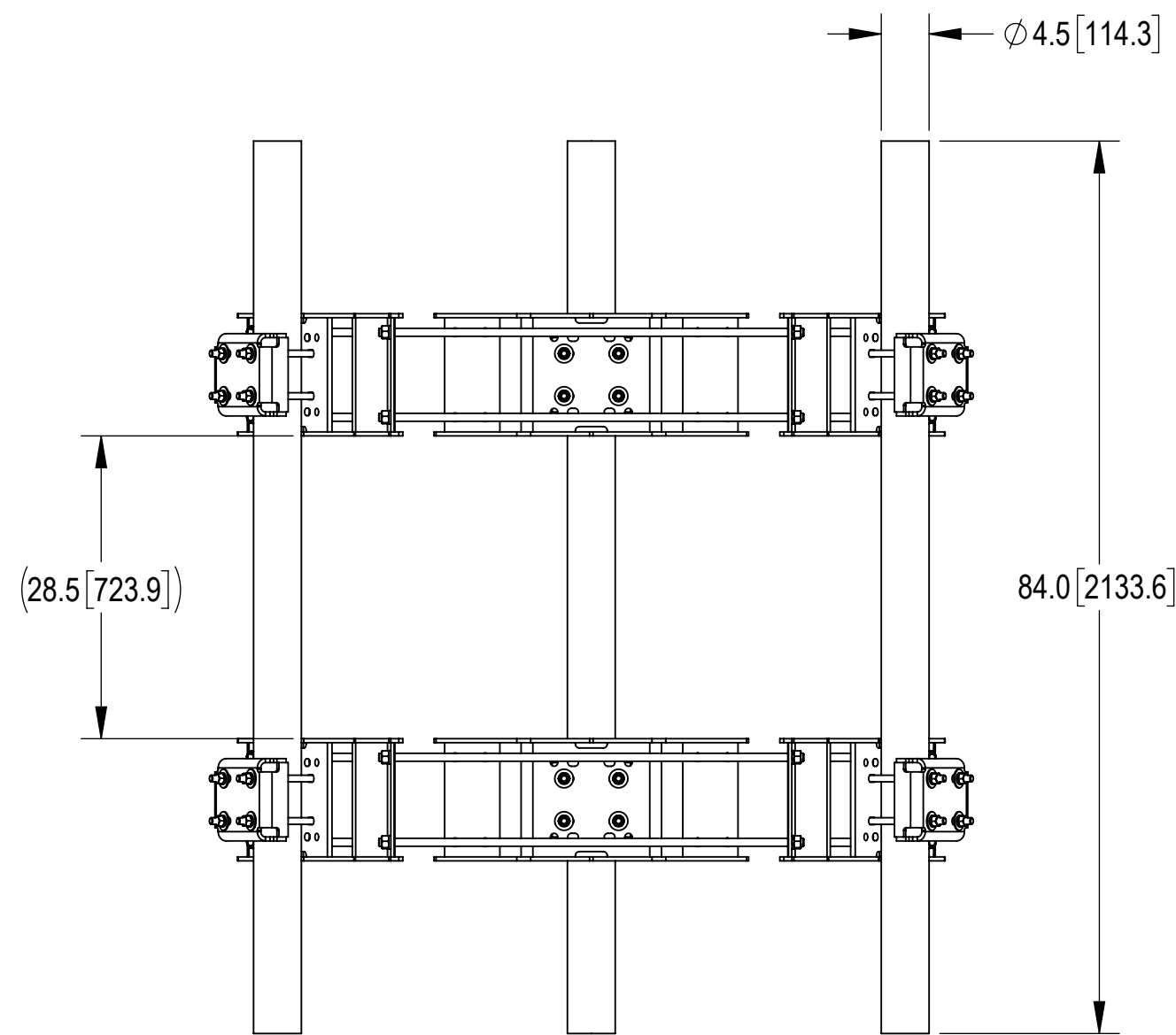
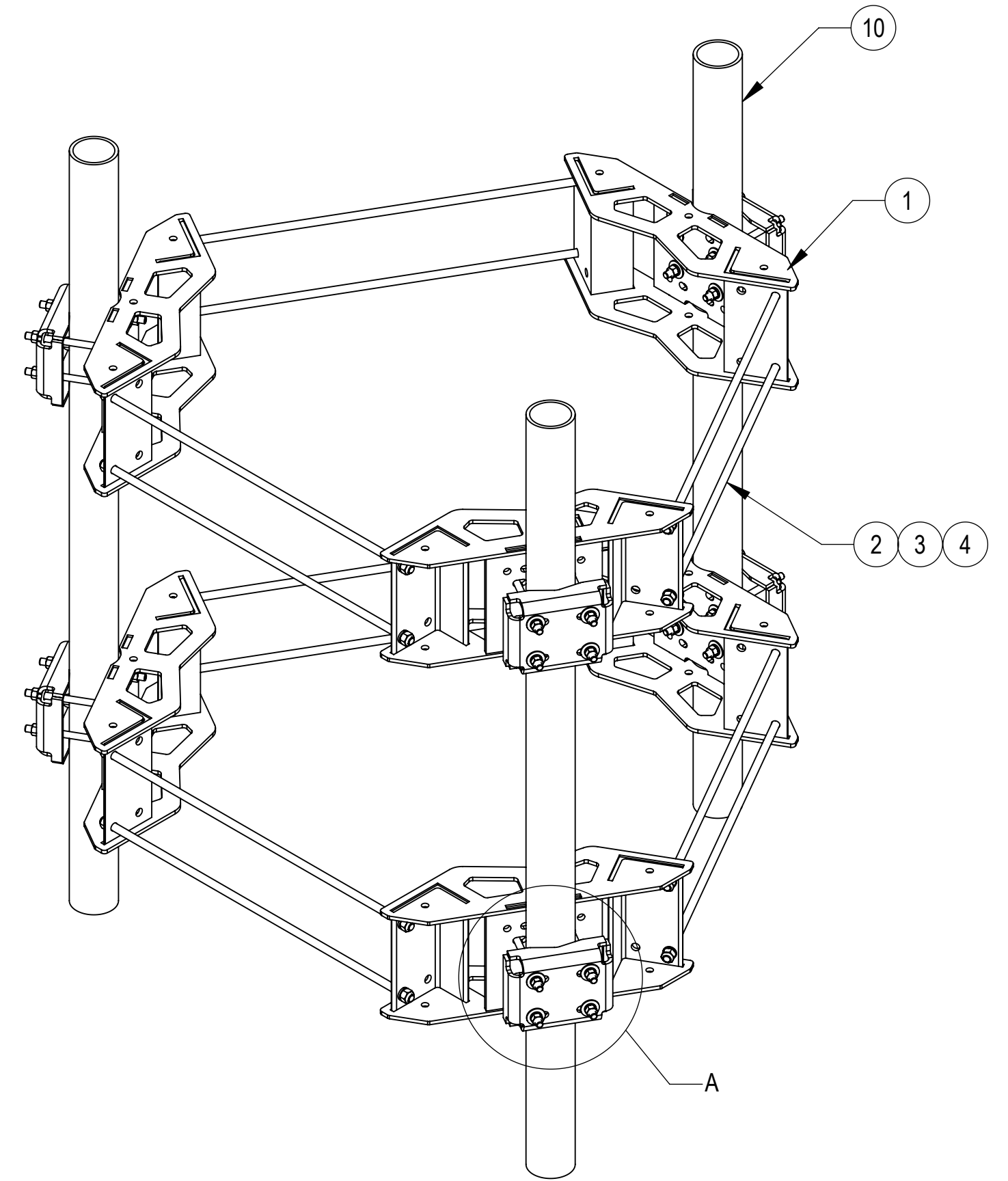
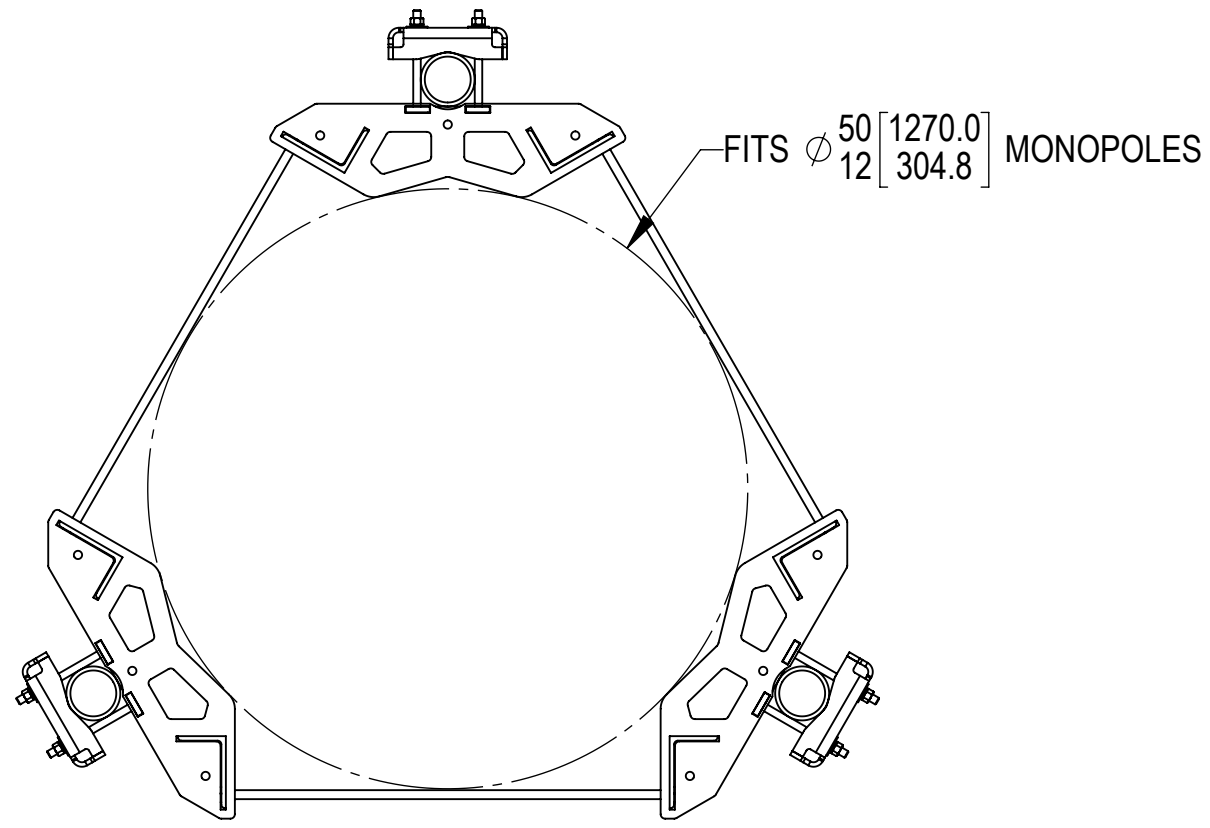


4

3

2

1



DETAIL A  
SCALE 1 : 6

COMPONENT PART NUMBERS PROVIDED FOR ASSEMBLY PURPOSES;  
INDIVIDUAL COMPONENTS MAY BE SHIPPED AS PARTS WITHIN AN INCLUDED KIT.

ITEM	PART NO.	DESCRIPTION	QTY.	WEIGHT	NOTE NO.
1	RM1550301	15"-50" 3 SECTOR RM WLDMNT	6	65.93 LBS	
2	MT38440	3/4" X 40" GALV THREADED ROD GRADE B7	12	4.98 LBS	
3	GWL-06	3/4" GALV LOCK WASHER	24	0.04 LBS	
4	GN-06	3/4" GALV HEX NUT	24	0.15 LBS	
5	MTC4204-1000-00	CLAMP FOR RING MOUNT	6	12.62 LBS	
6	MT-381-10	5/8" X 10" GALV THREADED ROD	24	0.86 LBS	
7	GWF-05	5/8" GALV FLAT WASHER, 1.7OD	48	0.06 LBS	
8	GWL-05	5/8" GALV LOCK WASHER	48	0.03 LBS	
9	GN-05	5/8" GALV HEX NUT	48	0.08 LBS	
10	BPS-CCJ-G-084-H	PIPE-GALV,4.5ODX84"	3	105.26 LBS	

COMMSCOPE, INC. OF NORTH CAROLINA				
TITLE SF, MONOPOLE, AMK, 12"-50"				
SIZE C	SCALE 1:12	DOCUMENT NO. SF-MONO-AMK-001		
DRAWING		VERSION	STATUS	REVISION
		00	RE	A
				SHEET 2 OF 3

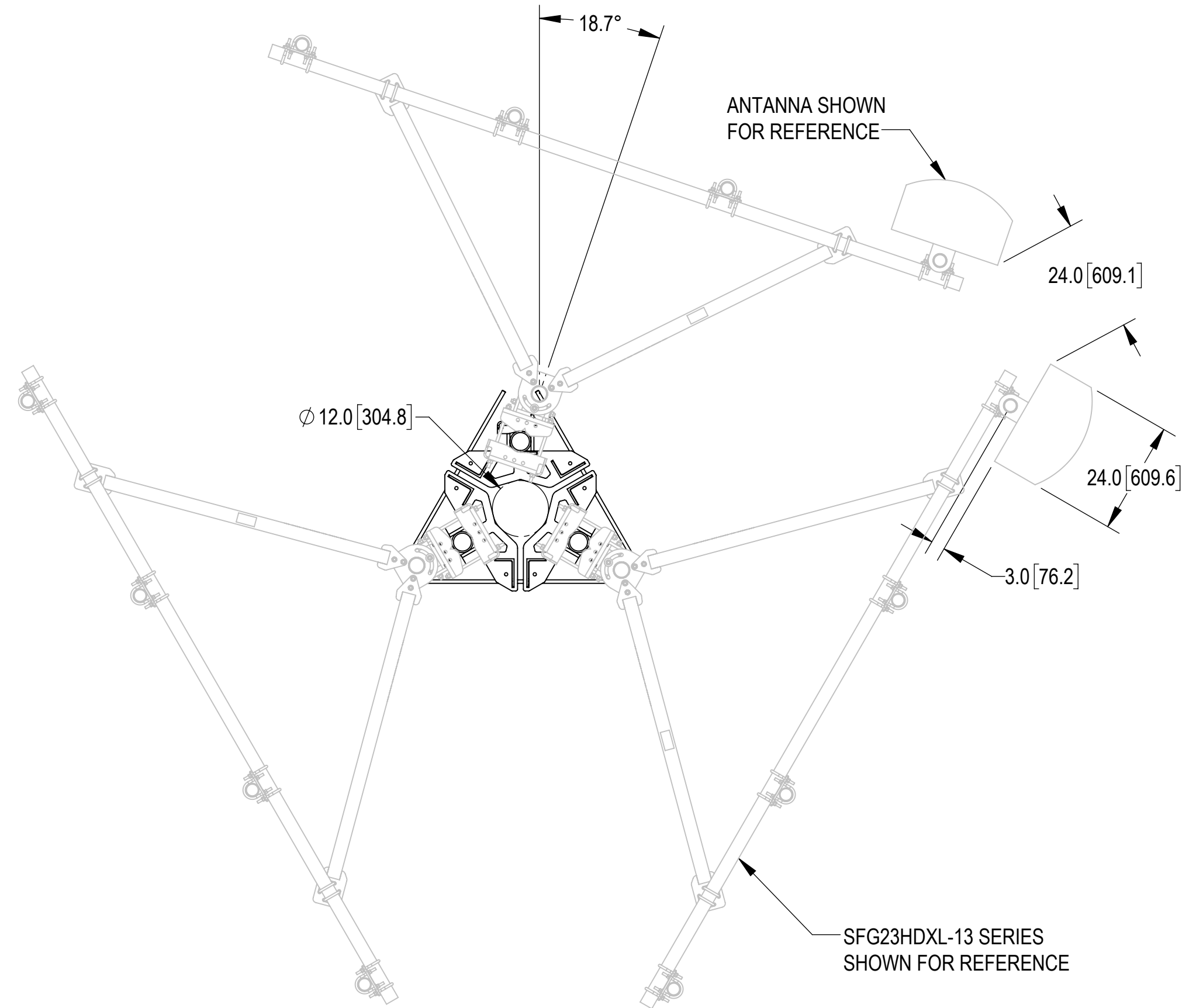
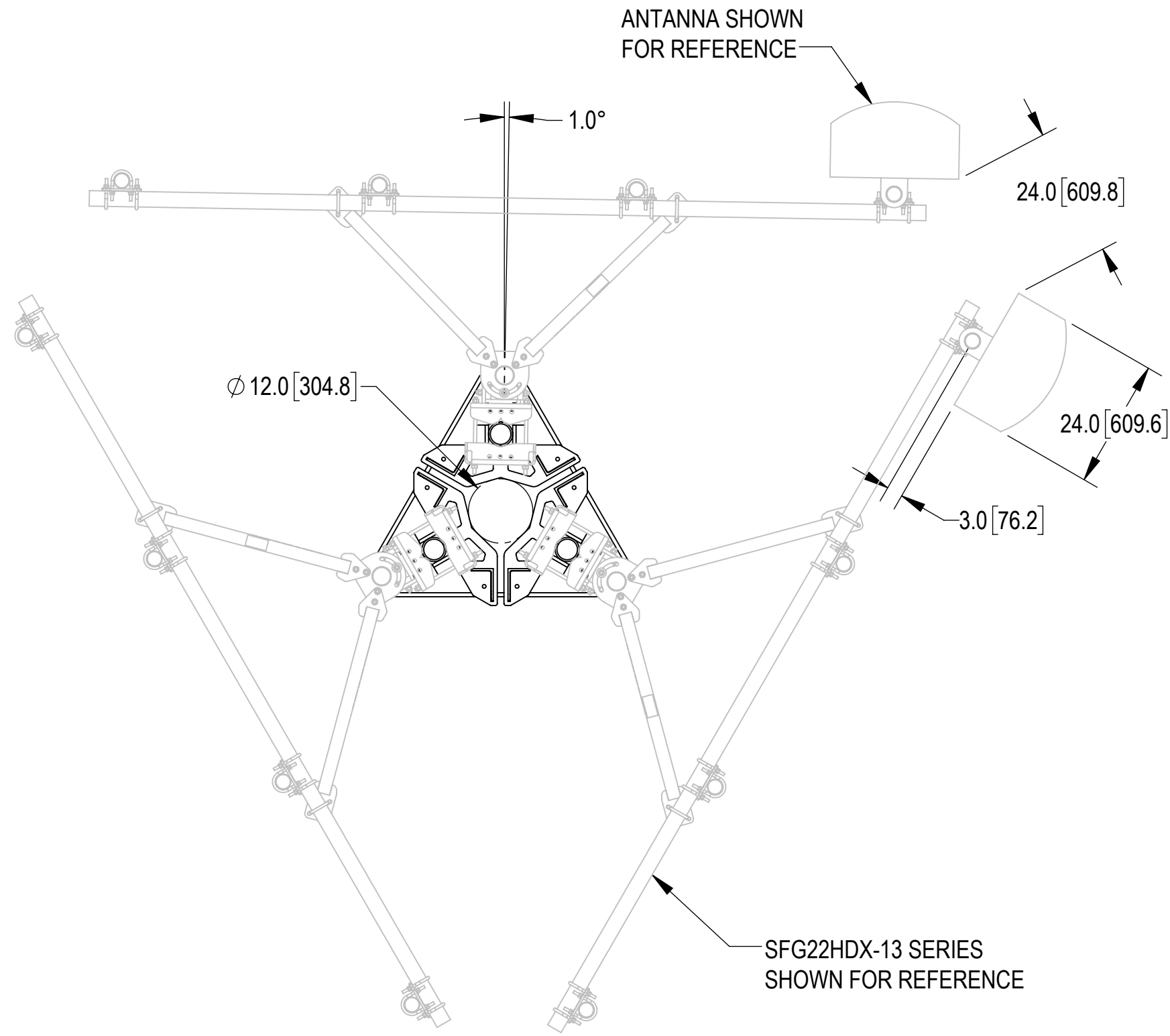
4


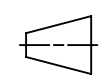
3

2

1

ATTACHED WITH SECTOR FRAMES VIEW  
(SECTOR FRAMES SOLD SEPARATELY)



COMMSCOPE, INC. OF NORTH CAROLINA					
TITLE SF, MONOPOLE, AMK, 12"-50"					
SIZE <b>C</b>	SCALE <b>1:12</b>	DOCUMENT NO. SF-MONO-AMK-001			
 		DRAWING			SHEET 3 OF 3
		VERSION 00	STATUS RE	REVISION A	