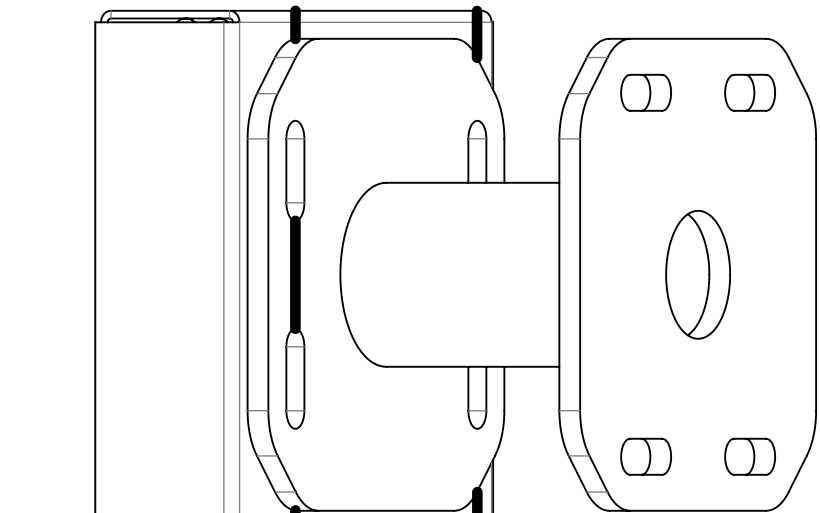
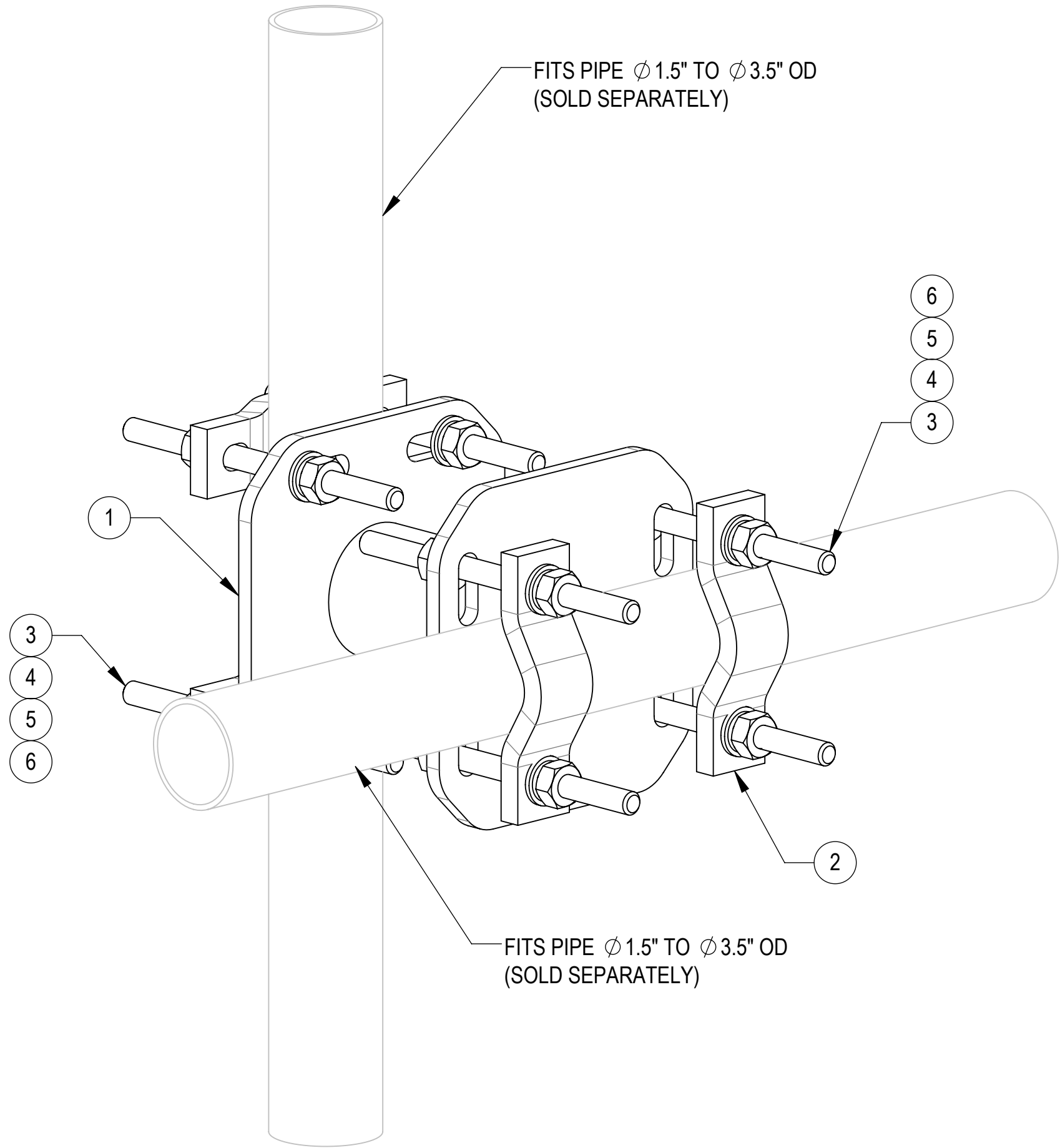


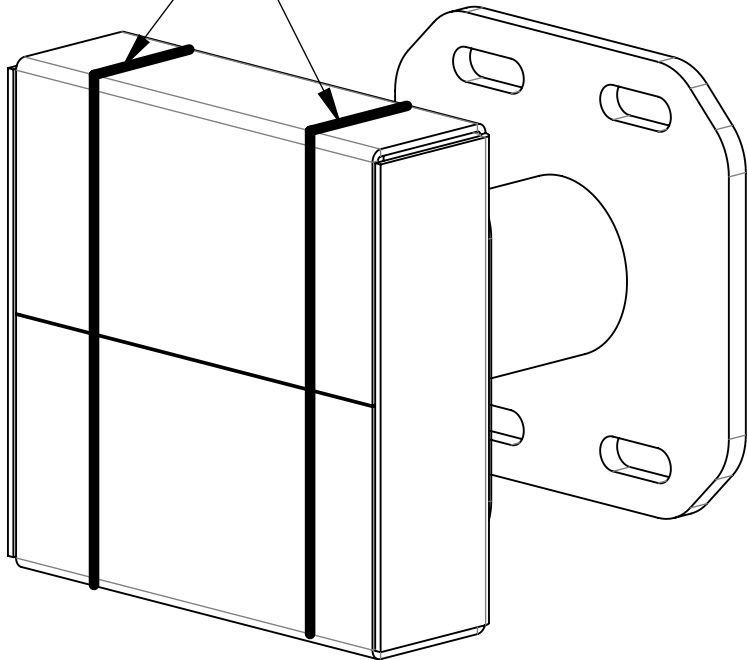
- 1.0 GENERAL NOTES
- 1.1 ALL METRIC DIMENSIONS ARE IN BRACKETS [X. X]
- 1.2 FOR PATENT INFO: <https://www.adwpat.com>
- 2.0 DESIGN NOTES
- 2.1 ANY HAZARDS OR OBSTRUCTIONS TO THE CLIMBING FACILITY AND SAFETY CLIMB MUST BE IDENTIFIED PRIOR TO INSTALLING THE APPURTENANCE. ADDITIONAL PRODUCTS MAY BE REQUIRED TO MAINTAIN THE INTEGRITY OF THE SAFETY CLIMB. DURING INSTALLATION, TEMPORARY AND/OR PERMANENT PRECAUTIONARY MEASURES SHOULD BE TAKEN TO PRESERVE THE CLIMBING FACILITY AND/OR SAFETY CLIMB.
- 3.0 MANUFACTURING/SPECIAL REQUIREMENTS
- 3.1 TIGHTEN ALL BOLTS SECURING FLAT PLATES BY THE TURN-OF-NUT METHOD. TIGHTEN ALL U-BOLTS USING TURN-OF-NUT METHOD WITH ATTENTION TO LEAVE EQUAL DISTANCE AND EQUAL FORCE ON EACH LEG OF THE U-BOLT.
- 4.0 TEST
- 5.0 PACKAGING
- 5.1 PACKAGING SHALL MEET ANDREW REQUIREMENTS PER DOCUMENT IS-PL-3005
- 5.2 PRINTED DOCUMENT TO BE PLACED INSIDE POLYBAG AND THEN IN SHIPPING CONTAINER
- 5.3 EXTRA HARDWARE MAY BE SUPPLIED, BAGGED AND SHIPPED

REVISIONS			
REV.	DESCRIPTION	DATE	APPROVED
A	INITIAL RELEASE	YX1027 16APR25	YZ1080 50102475AMO




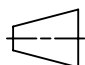


STRAP FOR REFERENCE

STRAP FOR REFERENCE



PACKAGING

<div><b>ANDREW</b><sup>®</sup> an Amphenol company</div>									
TOLERANCES						SAP MATERIAL MASTER			
1 PLACE .X[X] ± 0.2[6.3]			3 PLACE .XXX[X] ± 0.060[1.5]			860678540-06			
2 PLACE .XX[X] ± 0.12[3.0]			ANGLES ± 2°						
FINISH					MATERIAL				
UNLESS OTHERWISE SPECIFIED DIMENSIONS ARE IN INCHES INTERPRET PER ANSI Y 14.5M-1994		NAME	DATE	TITLE					
	CE	YX1027	16APR25	6" STANDOFF CROSSOVER WELDMENT, KIT					
	RW	YX1027	05/07/2025						
									
	AD	JL1183	05/07/2025						
	RE	YX1027	05/07/2025	SCALE	DOCUMENT NO.				
	ECN 50102475AMO			1:4	860678540-06				
SIZE	Auth Group	INSL	MODEL			DRAWING			SHEET 1 OF 1
C			VERSION	STATUS	REVISION	VERSION	STATUS	REVISION	
			00	RE	A	00	RE	A	

COMPONENT PART NUMBERS PROVIDED FOR ASSEMBLY PURPOSES;  
INDIVIDUAL COMPONENTS MAY BE SHIPPED AS PARTS WITHIN AN INCLUDED KIT.

ITEM NO.	PART NUMBER	DESCRIPTION	QTY.	WEIGHT	NOTE NNO.
1	860678540-0601-00	6" STANDOFF CROSSOVER WELDMENT	1	12.18 LBS	
2	SCP10	CLAMP HALF: 1/2", 9/16" HOLE,4-1/8" (EA)	4	1.20 LBS	
3	MT-379-8	1/2" X 8" GALV THREADED ROD	8	0.44 LBS	
4	GWFO4A	1/2" GALV FLAT WASHER (A325)	16	0.02 LBS	
5	GWL-04	1/2" GALV LOCK WASHER	16	0.01 LBS	
6	GN-04A	1/2" GALV HEX NUT (A194 2H)	16	0.07 LBS	

DENSITY		lbs/in³
MASS	33.62	lbs
VOLUME	118.83	in³
SURFACE AREA	1299.65	in²
HEIGHT	6.24"	
LENGTH	10.24"	
WIDTH	8.34"	

Confidential