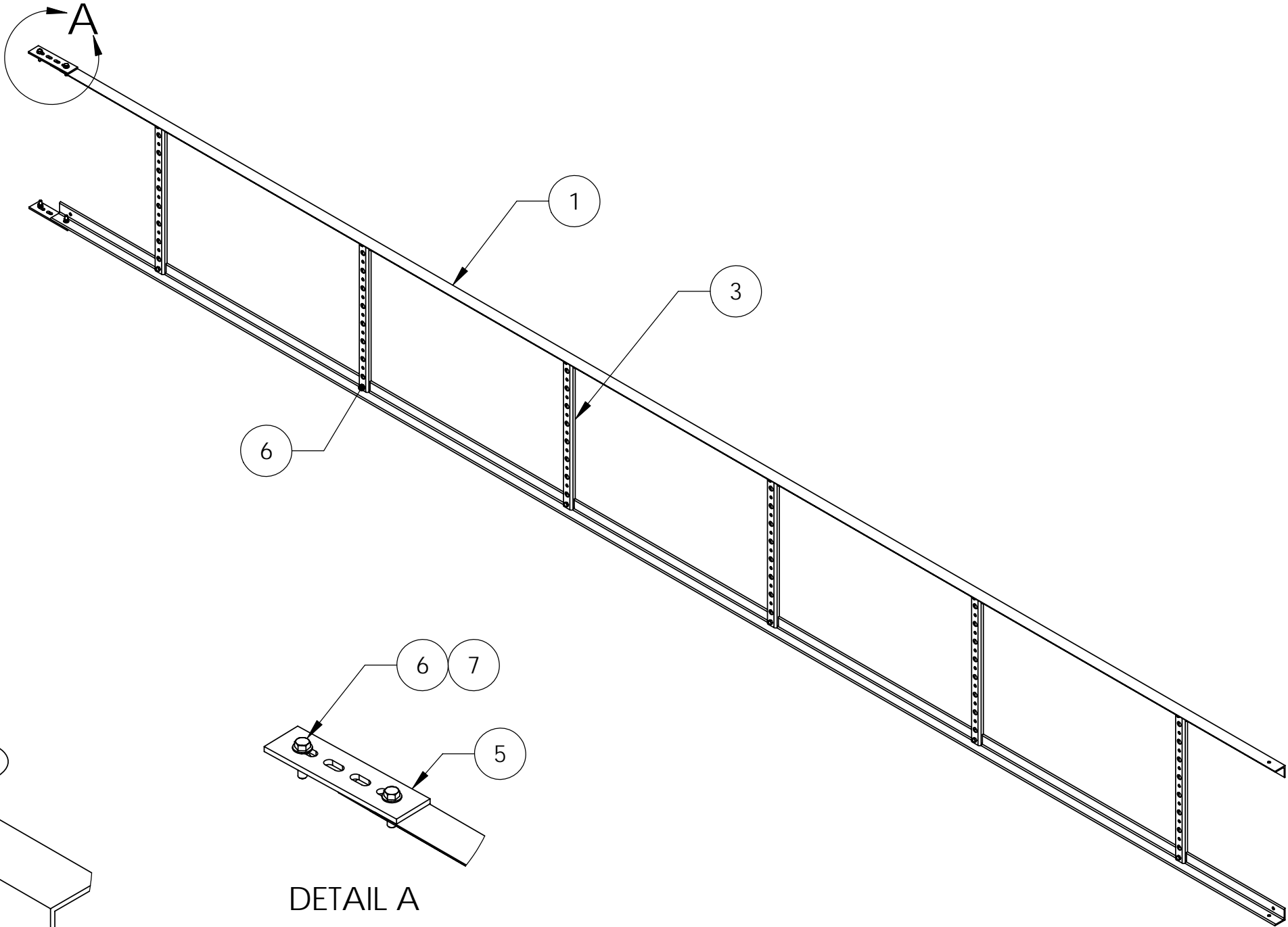
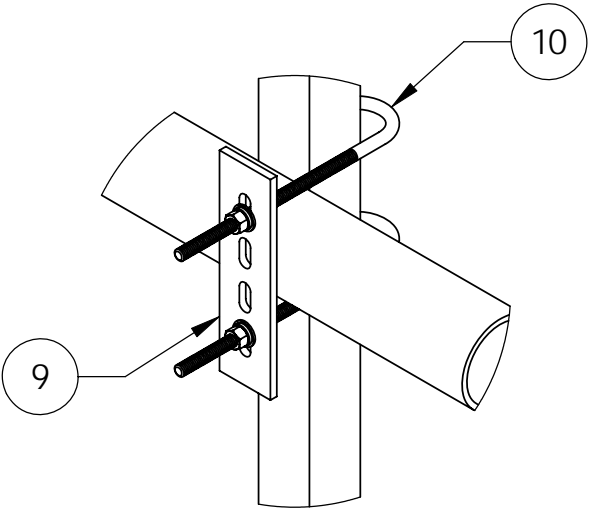


ITEM	PART NO.	DESCRIPTION	QTY.	WEIGHT
1	CL20.01	20' ANGLE SIDE RAIL	2	47.76 LBS
2	CL0820UH	HARDWARE KIT (ITEMS 3-10)	1	
3	CL08R.01	26" LADDER RUNG	6	2.21 LBS
4	CL20H	HARDWARE KIT (ITEMS 5-7)	1	
5	HKCLU.02	BACKING PLATE	2	0.95 LBS
6	GWF-03	3/8" GALV FLAT WASHER	4	0.01 LBS
7	GB-03145	3/8" X 1-1/2" GALV BOLT KIT	16	0.04 LBS
8	HK-CL-U	HARDWARE KIT (ITEMS 9-10)	2	
9	HKCLU.02	BACKING PLATE	4	0.95 LBS
10	GJB0380	3/8" X 8" GALV. J-BOLT	8	0.36 LBS

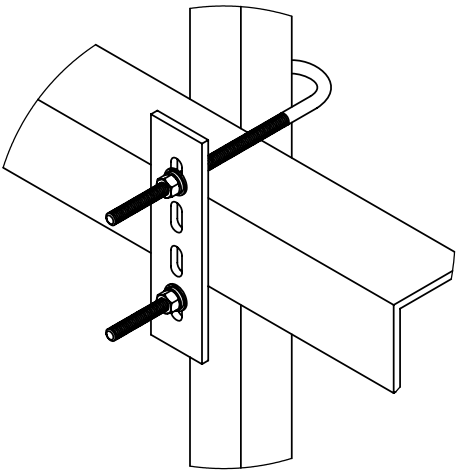
REVISIONS				
REV.	ZONE	DESCRIPTION	BY	DATE
A		INITIAL RELEASE	ACG	02/25/04
B		UPDATE PART LIST	ACG	09/10/04
C		UPDATE PART LIST	ACG	01/13/05
D		REPLACE J-BOLT FROM JB-HK	ACG	12/15/08




DETAIL A



ROUND MEMBER



ANGLE MEMBER

These drawings and specifications are the proprietary property of ANDREW CORPORATION and may be used only for the specific purpose authorized in writing by Andrew Corporation.  ALL DIMENSIONS ARE IN INCHES U.O.S. TOLERANCES UNLESS OTHERWISE SPECIFIED: .X = .06 ANGLES 2' .XX = .03 FRACTIONS 1/32 .XXX= .010  REMOVE BURRS AND BREAK EDGES .005  DO NOT SCALE THIS PRINT	DRAWN BY: ACG	SHEET: 1 of 1	PART NUMBER: CL-0820-U
	CHECKED BY: TP	SCALE: NTS	DESCRIPTION: 20' CABLE LADDER - 8 HOLE RUNGS
	DATE: 01/14/05	MATERIAL: A36	DRAWING TYPE: ASSEMBLY DRAWING
	REVISION: D	FINISH: GALV A123 WEIGHT: 112.17 LBS	 ORLAND PARK, IL. 60462 U.S.A.