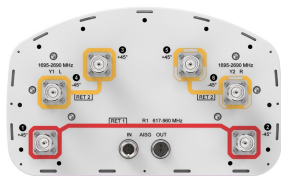


KVV-65A-R2



6-port sector antenna, 2x 617-960, 4x 1695-2690 MHz and 65° HPBW, 2XRET

- Small size ideal for deploying low band and mid band in concealments and flagpole

General Specifications

Antenna Type	Sector
Band	Multiband
Grounding Type	RF connector inner conductor and body grounded to reflector and mounting bracket
Performance Note	Outdoor usage
RF Connector Interface	4.3-10 Female
RF Connector Location	Bottom
RF Connector Quantity, mid band	4
RF Connector Quantity, low band	2
RF Connector Quantity, total	6

Remote Electrical Tilt (RET) Information

RET Hardware	CommRET v2
RET Interface	8-pin DIN Female 8-pin DIN Male
RET Interface, quantity	1 female 1 male
Input Voltage	10–30 Vdc
Internal RET	Low band (1) Mid band (1)
Power Consumption, active state, maximum	10 W
Power Consumption, idle state, maximum	2 W
Protocol	3GPP/AISG 2.0

Dimensions

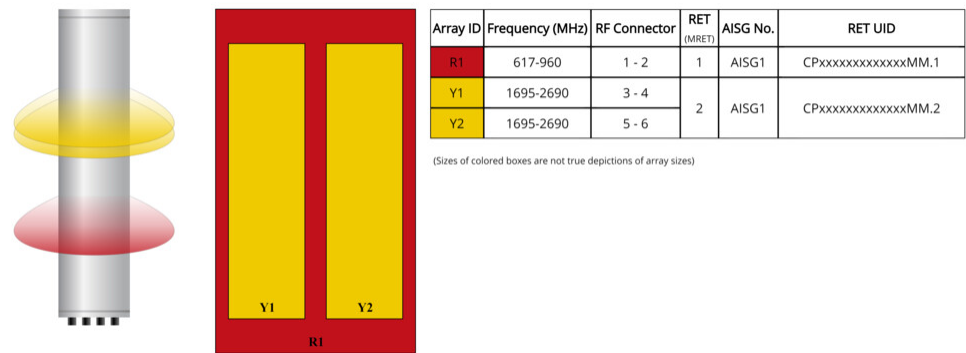
Width	301 mm 11.85 in
Depth	181 mm 7.126 in
Length	1219 mm 47.992 in

KVV-65A-R2

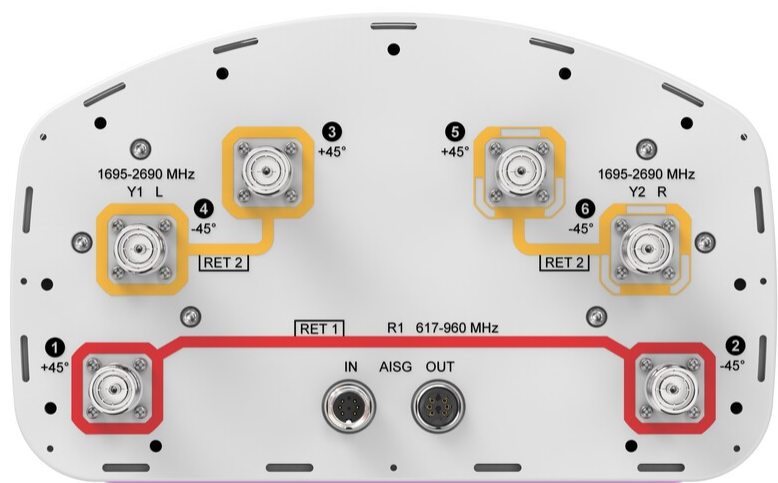
Net Weight, antenna only

14 kg | 30.865 lb

Array Layout



Port Configuration



Electrical Specifications

KVV-65A-R2

Impedance	50 ohm
Operating Frequency Band	1695 – 2690 MHz 617 – 960 MHz
Polarization	±45°
Total Input Power, maximum	1,000 W @ 50 °C

Electrical Specifications

	R1	R1	R1	R1	Y1,Y2	Y1,Y2	Y1,Y2	Y1,Y2	Y1,Y2
Frequency Band, MHz	617–698	698–806	806–894	894–960	1695–1880	1850–1990	1920–2200	2300–2500	2500–2690
RF Port	1,2	1,2	1,2	1,2	3,4,5,6	3,4,5,6	3,4,5,6	3,4,5,6	3,4,5,6
Gain, dBi	13.1	13.3	13.4	13.5	16.7	17	17.5	18	18.4
Beamwidth, Horizontal, degrees	76	76	72	71	64	62	57	60	55
Beamwidth, Vertical, degrees	21.2	19.2	16.9	15.2	7.6	7.2	6.8	6.1	5.8
Beam Tilt, degrees	4–18	4–18	4–18	4–18	2–12	2–12	2–12	2–12	2–12
USLS (First Lobe), dB	18	19	16	15	15	16	17	18	18
Front-to-Back Ratio at 180°, dB	28	29	27	26	33	35	33	32	34
Front-to-Back Total Power at 180° ± 30°, dB	19	21	22	20	25	27	27	28	28
Isolation, Cross Polarization, dB	25	25	25	25	25	25	25	25	25
Isolation, Inter-band, dB	25	25	25	25	25	25	25	25	25
VSWR Return loss, dB	1.5 14.0	1.5 14.0	1.5 14.0	1.5 14.0	1.5 14.0	1.5 14.0	1.5 14.0	1.5 14.0	1.5 14.0
PIM, 3rd Order, 2 x 20 W, dBc	-150	-150	-150	-150	-150	-150	-150	-150	-150
Input Power per Port at 50°C, maximum, watts	250	250	250	250	200	200	200	200	200

Mechanical Specifications

Wind Loading @ Velocity, frontal	173.0 N @ 150 km/h (38.9 lbf @ 150 km/h)
Wind Loading @ Velocity, lateral	142.0 N @ 150 km/h (31.9 lbf @ 150 km/h)
Wind Loading @ Velocity, maximum	334.0 N @ 150 km/h (75.1 lbf @ 150 km/h)
Wind Loading @ Velocity, rear	176.0 N @ 150 km/h (39.6 lbf @ 150 km/h)
Wind Speed, maximum	241 km/h (150 mph)

Packaging and Weights

Width, packed	380 mm 14.961 in
---------------	--------------------

KVV-65A-R2

Depth, packed	295 mm 11.614 in
Length, packed	1344 mm 52.913 in
Weight, gross	24.3 kg 53.572 lb

Regulatory Compliance/Certifications

Agency	Classification
CHINA-ROHS	Below maximum concentration value
REACH-SVHC	Compliant as per SVHC revision on www.commscope.com/ProductCompliance
ROHS	Compliant
UK-ROHS	Compliant



Included Products

BSAMNT-3	–	Wide Profile Antenna Downtilt Mounting Kit for 2.4 - 4.5 in (60 - 115 mm) OD round members. Kit contains one scissor top bracket set and one bottom bracket set.
----------	---	------------------------------------------------------------------------------------------------------------------------------------------------------------------

* Footnotes

Performance Note	Severe environmental conditions may degrade optimum performance
------------------	-----------------------------------------------------------------

BSAMNT-3



Wide Profile Antenna Downtilt Mounting Kit for 2.4 - 4.5 in (60 - 115 mm) OD round members. Kit contains one scissor top bracket set and one bottom bracket set.

Product Classification

Product Type Downtilt mounting kit

General Specifications

Application Outdoor

Color Silver

Dimensions

Compatible Diameter, maximum 115 mm | 4.528 in

Compatible Diameter, minimum 60 mm | 2.362 in

Weight, net 6.2 kg | 13.669 lb

Material Specifications

Material Type Galvanized steel

Packaging and Weights

Included Brackets | Hardware

Packaging quantity 1

Weight, gross 6.4 kg | 14.11 lb

Regulatory Compliance/Certifications

Agency	Classification
CE	Compliant with the relevant CE product directives
CHINA-ROHS	Below maximum concentration value
ISO 9001:2015	Designed, manufactured and/or distributed under this quality management system
REACH-SVHC	Compliant as per SVHC revision on www.andrew.com/ProductCompliance
ROHS	Compliant
UK-ROHS	Compliant

