

1572A or 1592A cable terminated with Shielded RJ45 plug

1. General product information

These instructions provide the termination procedure for shielded RJ45 plugs onto 1572A or 1592A double-jacketed cable.

Ordering information is listed below:

Material ID	Product	Description
5-1933433-3	Shielded RJ45 plug kit	Plug and load bar
1-1933943-1	Plug Boot, White	Boot with AntiSnag feature



Plug Kit



Boot

Figure A

2. Tools required

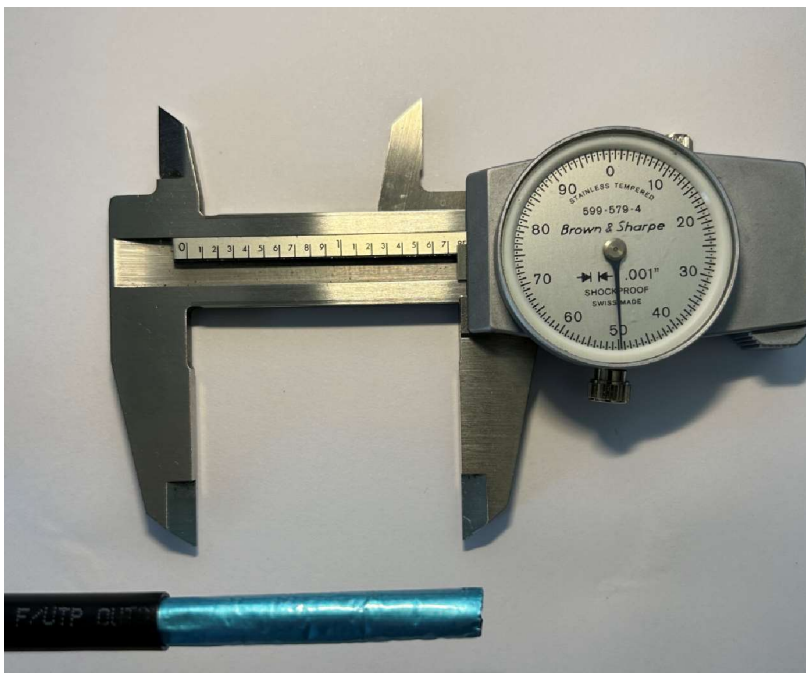
- Sentinel hand crimp tool 900019 or 900020
- Wire Cutters
- Wire strippers



3. Installation steps

Step 1 – Preparation of Cable for Termination

1.1 Strip outer jacket approximately 1.750 inch



1.2 Slide boot onto cordage



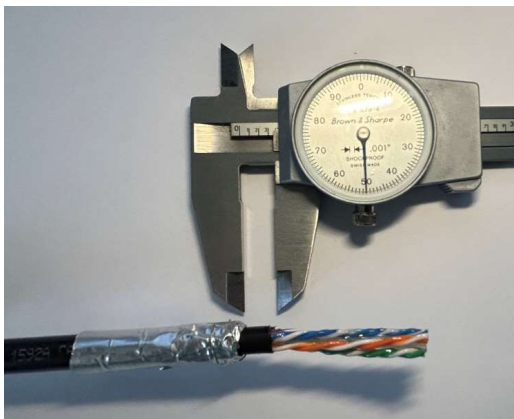
1.3 Fold foil back over the outer jacket



1.4 Wrap drain wire around the foil and outer jacket



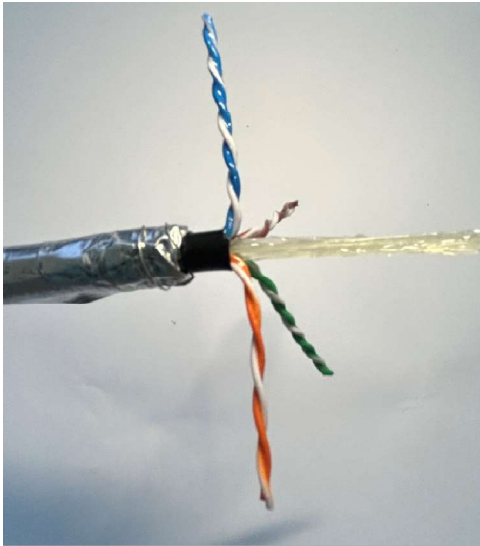
1.5 Strip inner jacket approximately 0.350 inches from foil/outer jacket as shown:



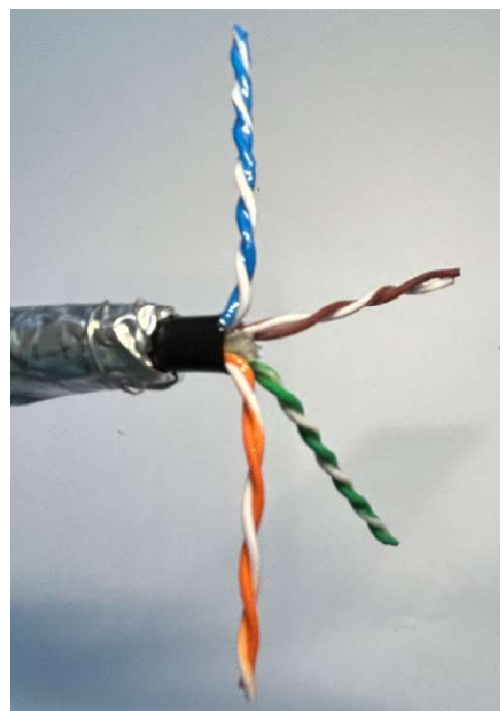
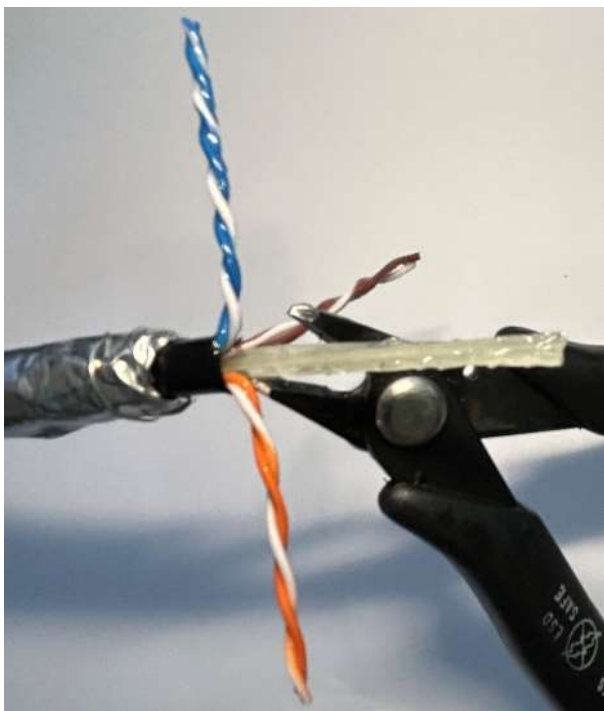
1.6 Slightly clean the flooding material from the conductor pairs



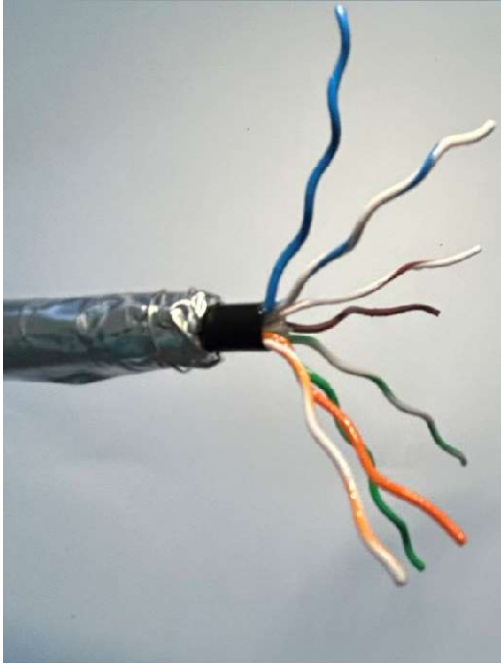
1.7 Separate the conductor pairs to expose the center core



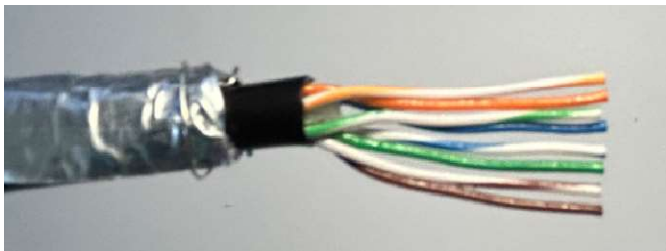
1.8 Clip the center core even with inner jacket



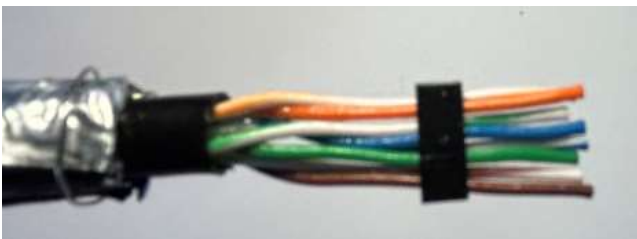
1.9 Separate and remove the twist from all conductor pairs



2.0 Straighten conductors and align in wiring scheme (T568B in this example)



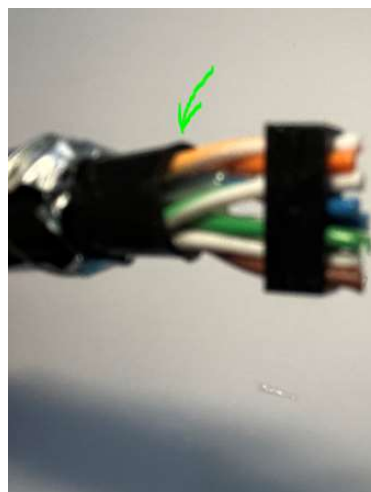
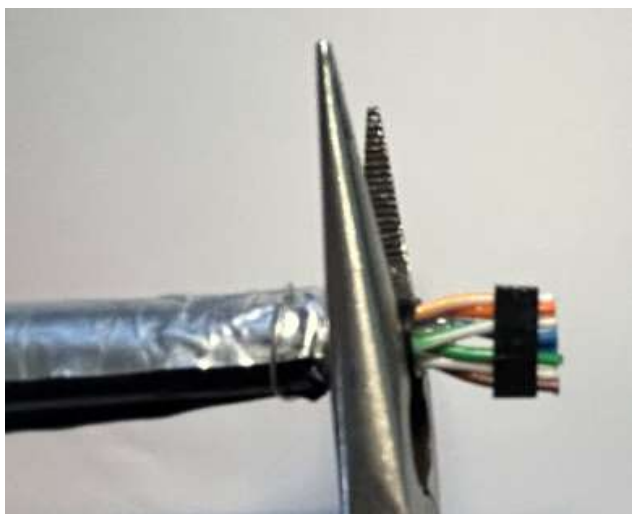
2.1 Slide load bar onto end of conductors



2.2 Slide load bar and cut ends of conductors approximately 0.450 inches from end



2.3 Apply slight pressure with pliers to form oval shape on inner jacket (parallel with load bar). This will aid insertion into the plug housing



2.4 Bend shield on the plug as shown



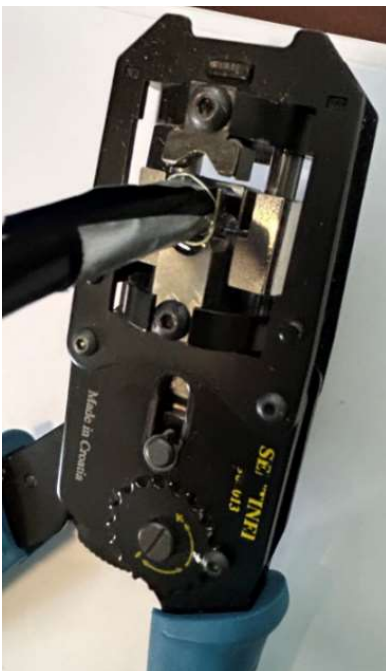
2.5 Insert conductors / cable into plug housing in correct wiring location (T568B this example)



2.6 Bend Shield onto cable / foil / drain wire



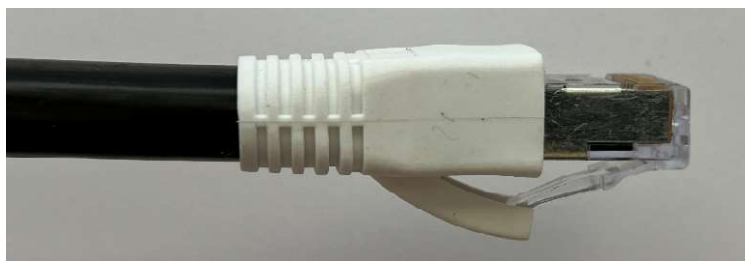
2.7 Place cable and the Plug into hand tool



2.8 Actuate hand tool and remove plug. Trim foil at back of shield



2.9 Slide Boot onto plug for complete termination



4. Revision history

- Rev. A – Initial release.
- Rev. B – Added cable 1572A.