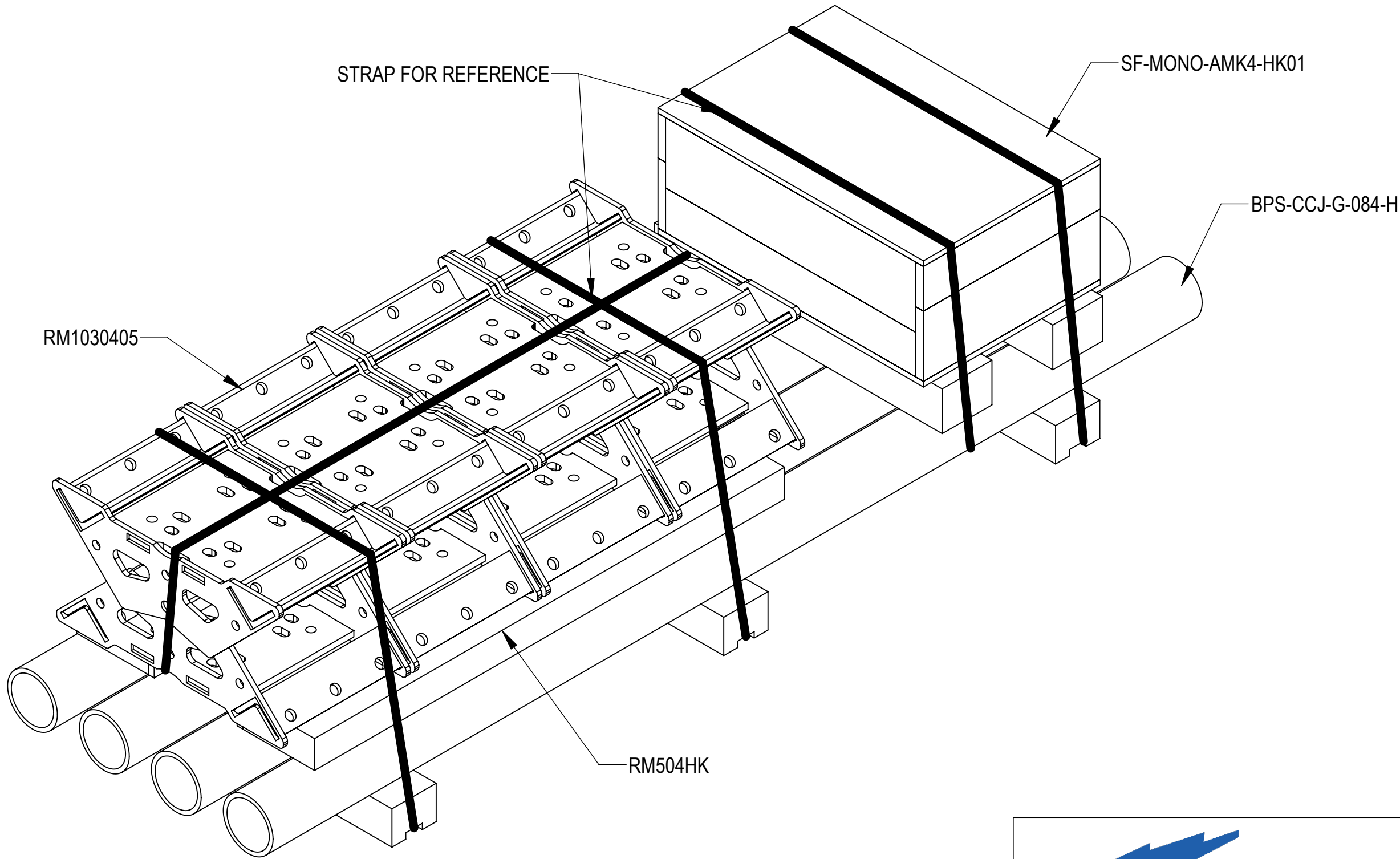

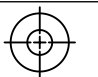
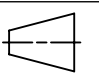


- 4
- 3
- 2
- 1
- 1.0 GENERAL NOTES
- 1.1 ALL METRIC DIMENSIONS ARE IN BRACKETS [X. X]
- 1.2 FOR PATENT INFO: <https://www.adwpat.com>
- 2.0 DESIGN NOTES
- 2.1 ANY HAZARDS OR OBSTRUCTIONS TO THE CLIMBING FACILITY AND SAFETY CLIMB MUST BE IDENTIFIED PRIOR TO INSTALLING THE APPURTENANCE. ADDITIONAL PRODUCTS MAY BE REQUIRED TO MAINTAIN THE INTEGRITY OF THE SAFETY CLIMB. DURING INSTALLATION, TEMPORARY AND/OR PERMANENT PRECAUTIONARY MEASURES SHOULD BE TAKEN TO PRESERVE THE CLIMBING FACILITY AND/OR SAFETY CLIMB.
- 2.2 FITS MONOPOLES 10" TO 50" OD.
- 3.0 MANUFACTURING/SPECIAL REQUIREMENTS
- 3.1 TIGHTEN ALL BOLTS SECURING FLAT PLATES BY THE TURN-OF-NUT METHOD. TIGHTEN ALL U-BOLTS USING TURN-OF-NUT METHOD WITH ATTENTION TO LEAVE EQUAL DISTANCE AND EQUAL FORCE ON EACH LEG OF THE U-BOLT. ALL FASTENERS SHOULD BE TIGHTENED PER AISC 6.5.2
- 4.0 TEST
- 5.0 PACKAGING
- 5.1 PACKAGING SHALL MEET ANDREW REQUIREMENTS PER DOCUMENT IS-PL-3005
- 5.2 PRINTED DOCUMENT TO BE PLACED INSIDE POLYBAG AND THEN IN SHIPPING CONTAINER
- 5.3 EXTRA HARDWARE MAY BE SUPPLIED, BAGGED AND SHIPPED

REVISIONS			
REV.	DESCRIPTION	DATE	APPROVED
A	INITIAL RELEASE	JL1183 03JUN25	YZ1080 50103125AMO

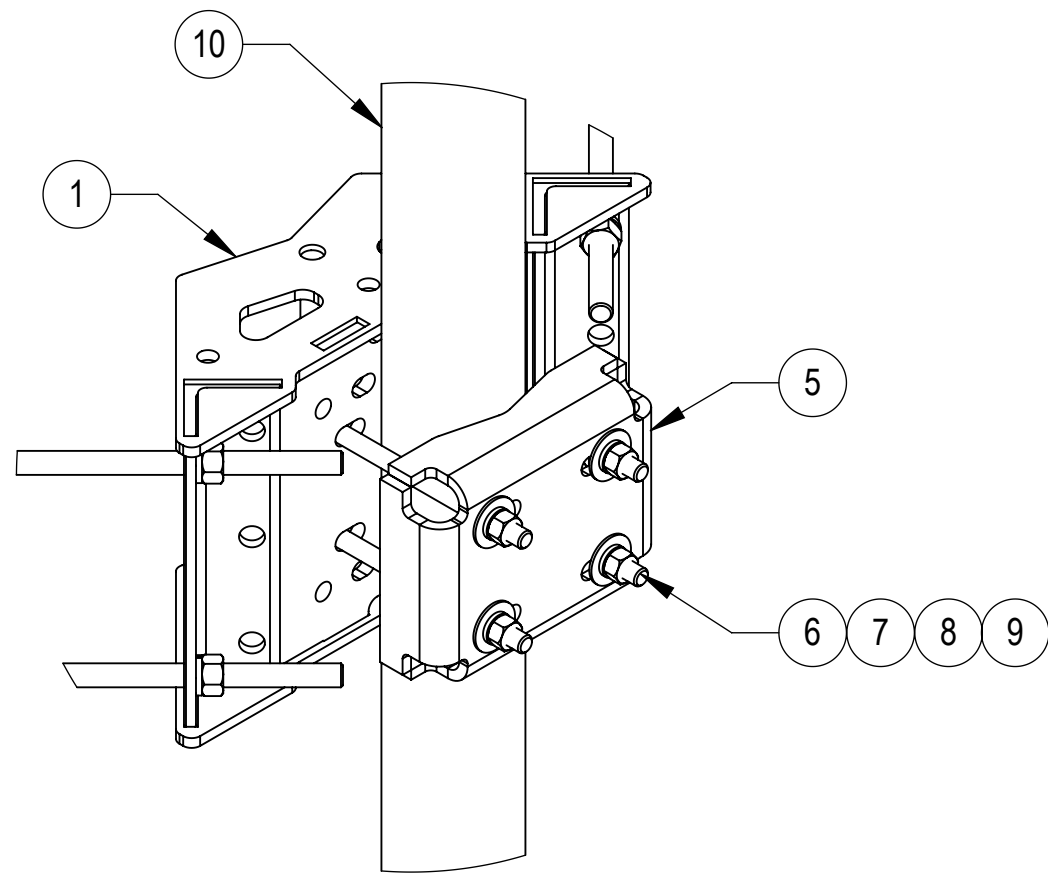
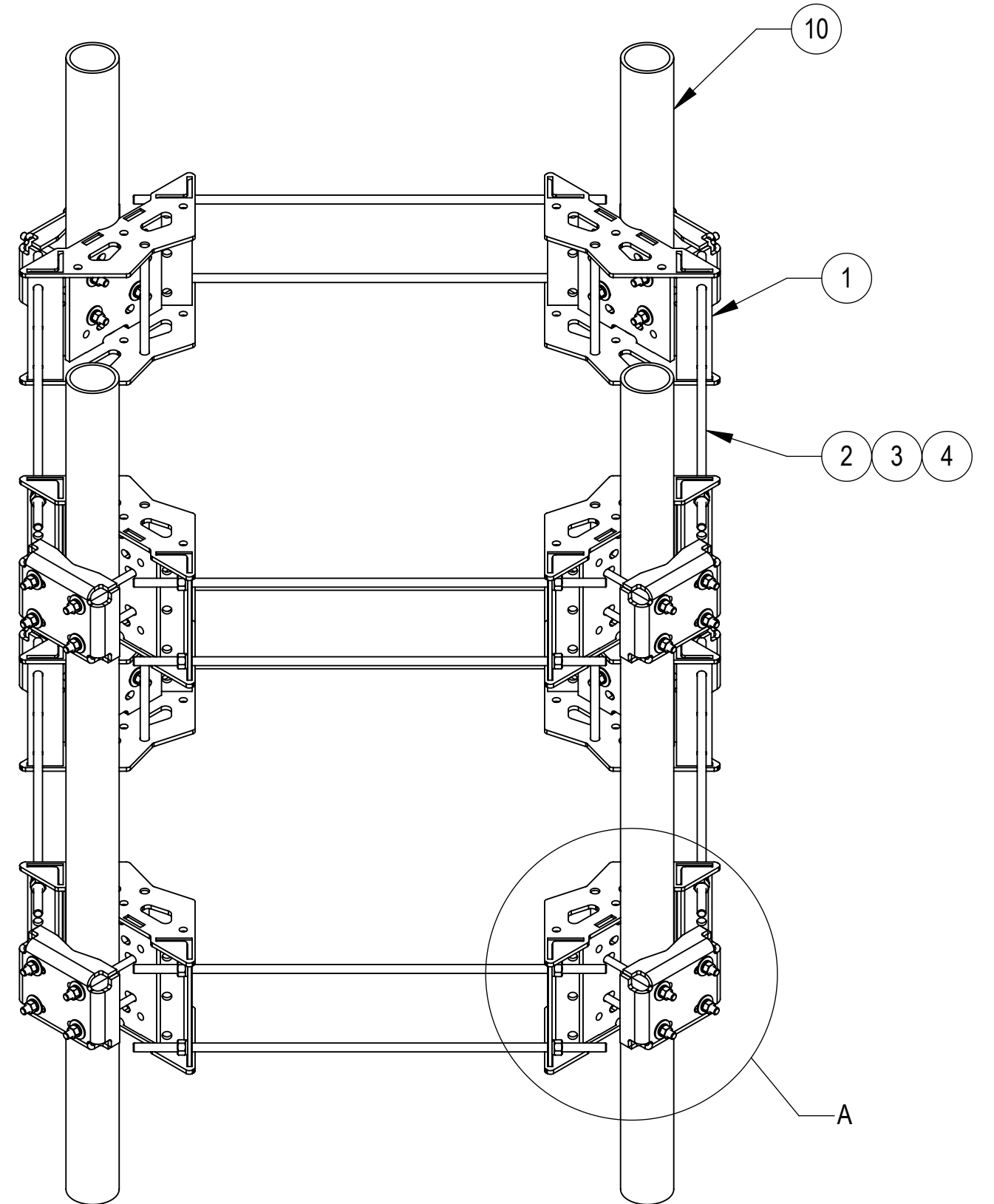
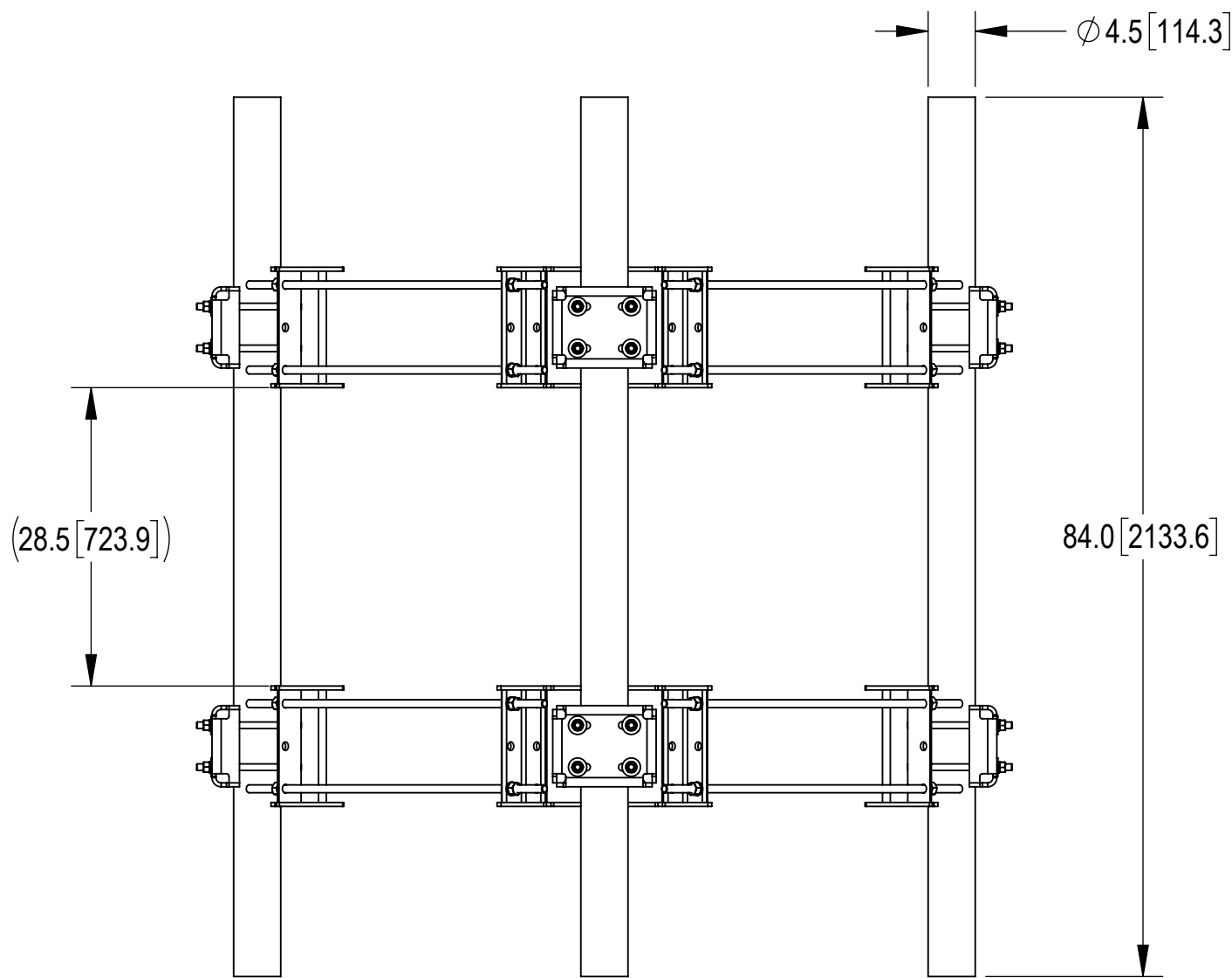
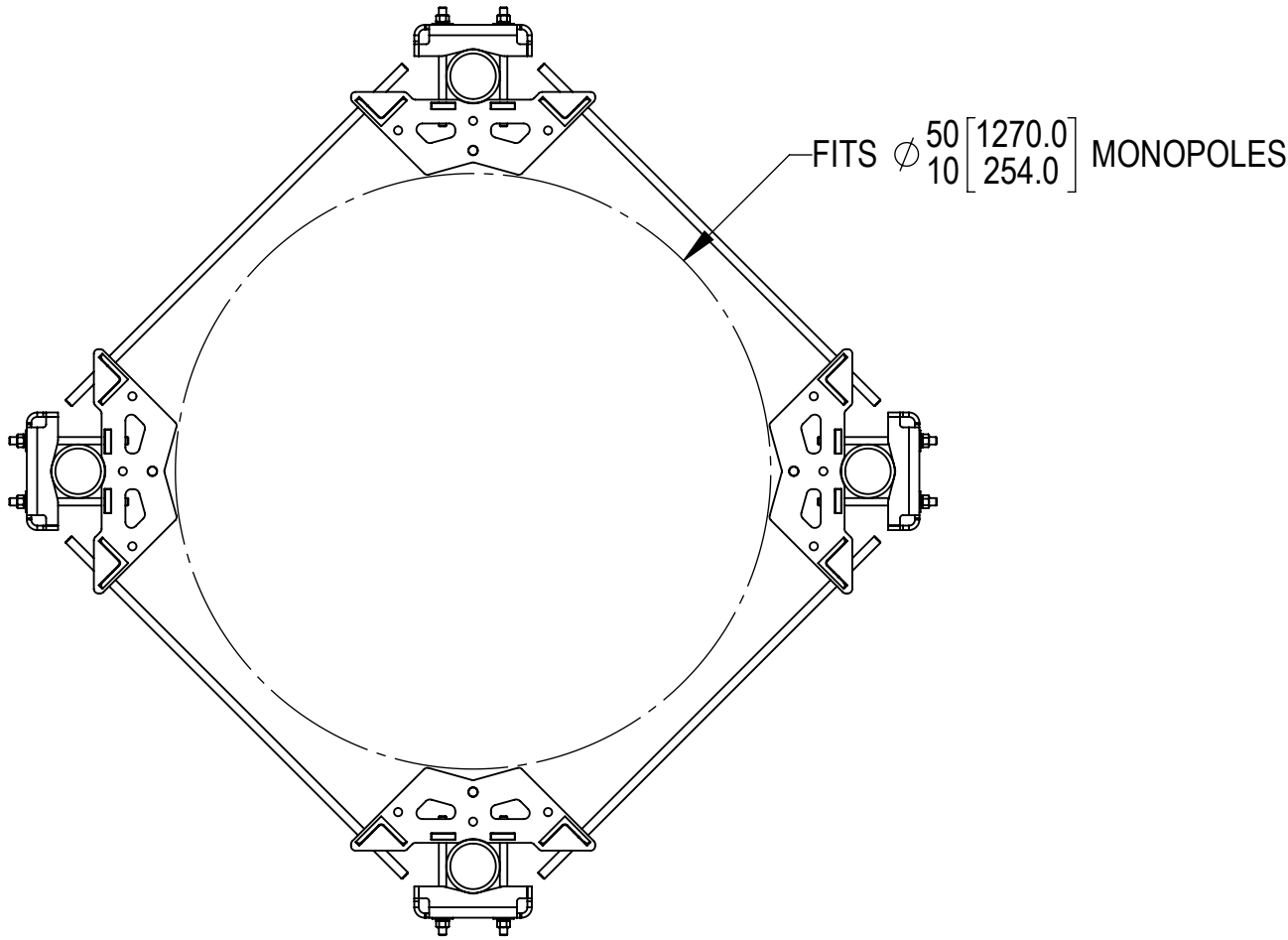


**ANDREW**[®] an Amphenol company

TOLERANCES		SAP MATERIAL MASTER							
1 PLACE .X[X] ± 0.2[6.3]	3 PLACE .XXX[X] ± 0.060[1.5]	SF-MONO-AMK4-001							
2 PLACE .XX[X] ± 0.12[3.0]	ANGLES ± 2°								
FINISH		MATERIAL							
<div>UNLESS OTHERWISE SPECIFIED DIMENSIONS ARE IN INCHES INTERPRET PER ANSI Y 14.5M-1994</div>		NAME	DATE	SF, MONOPOLE, AMK, 12"-50", 4 SECTORS					
		CE JL1183	03JUN25						
		RW JL1183	06/03/2025						
		AD YZ1080	06/04/2025						
		RE JL1183	06/04/2025	SCALE 1:12	DOCUMENT NO. SF-MONO-AMK4-001				
ECN 50103125AMO									
SIZE C	Auth Group	INSL	MODEL		DRAWING			SHEET	
			VERSION 00	STATUS RE	REVISION A	VERSION 00	STATUS RE	REVISION A	1 OF 3

DENSITY	1007.34	lbs/in³
MASS	4723.85	lbs
VOLUME	26346.70	in³
SURFACE AREA	26346.70	in²
HEIGHT	75.0"	
LENGTH	84.0"	
WIDTH	71.0"	

Confidential


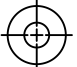
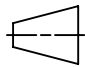


DETAIL A
SCALE 1 : 6

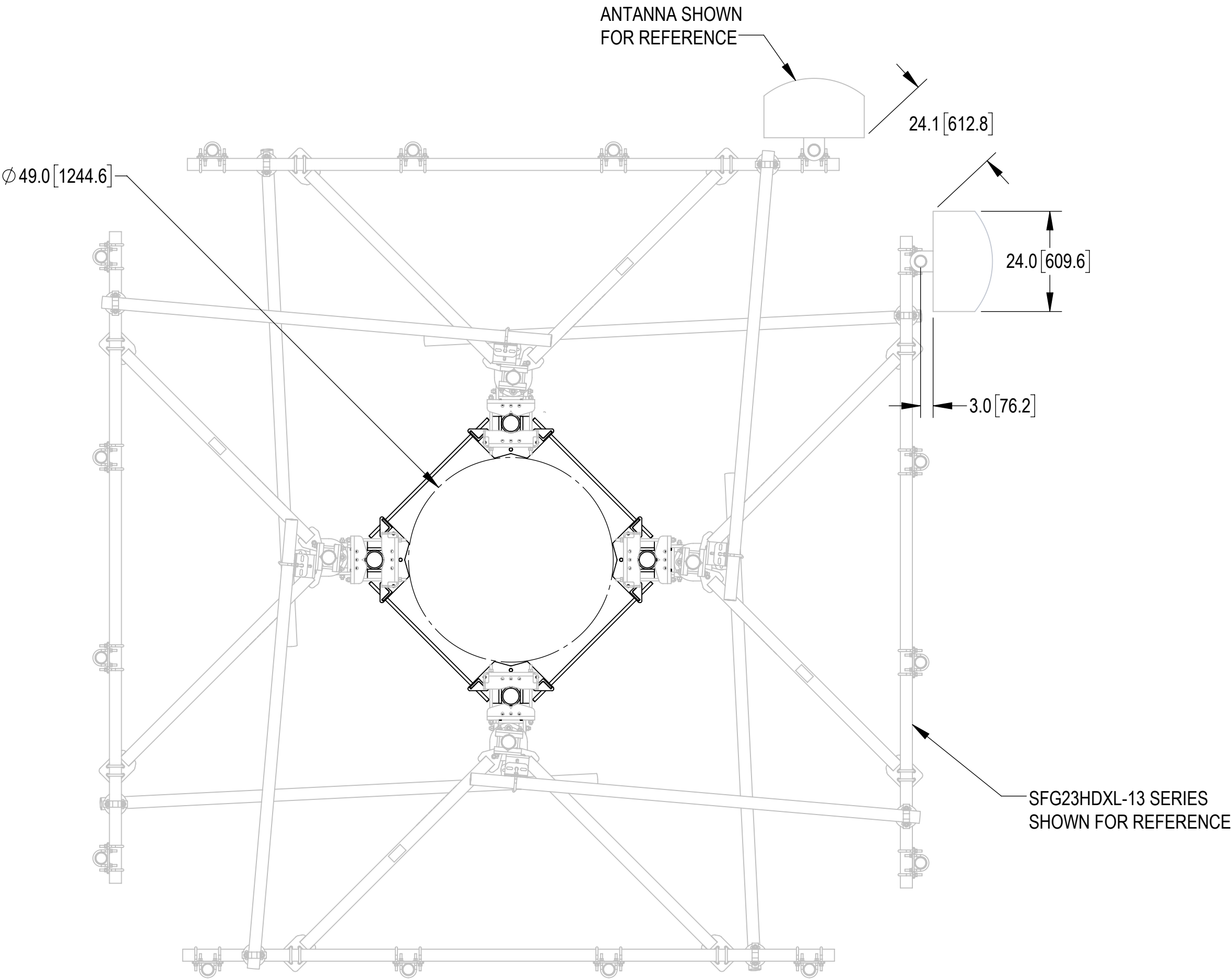
COMPONENT PART NUMBERS PROVIDED FOR ASSEMBLY PURPOSES;
INDIVIDUAL COMPONENTS MAY BE SHIPPED AS PARTS WITHIN AN INCLUDED KIT.

ITEM	PART NO.	DESCRIPTION	QTY.	WEIGHT	NOTE NO.
1	RM1030405	10-30 4 SECTOR RM KIT	8	45.20 LBS	
2	MT38440	3/4" X 40" GALV THREADED ROD GRADE B7	16	4.98 LBS	
3	GWL-06	3/4" GALV LOCK WASHER	32	0.04 LBS	
4	GN-06	3/4" GALV HEX NUT	32	0.15 LBS	
5	MTC4204-1000-00	CLAMP FOR RING MOUNT	8	12.62 LBS	
6	MT-381-10	5/8" X 10" GALV THREADED ROD	32	0.86 LBS	
7	GWF-05	5/8" GALV FLAT WASHER, 1.7OD	64	0.06 LBS	
8	GWL-05	5/8" GALV LOCK WASHER	64	0.03 LBS	
9	GN-05	5/8" GALV HEX NUT	64	0.08 LBS	
10	BPS-CCJ-G-084-H	PIPE-GALV, 4.5"OD X 84"	4	105.26 LBS	

Confidential

					
TITLE SF, MONOPOLE, AMK, 12"-50", 4 SECTORS					
SIZE C	SCALE 1:12	DOCUMENT NO. SF-MONO-AMK4-001			
 		DRAWING			SHEET 2 OF 3
		VERSION 00	STATUS RE	REVISION A	

ATTACHED WITH SECTOR FRAMES VIEW
(SECTOR FRAMES SOLD SEPARATELY)



MONOPOLE DIAMETER RANGE			
SFG SERIES	11' FACE PIPE	13' FACE PIPE	15' FACE PIPE
SFG22HDX/SFG23HDX	NA	NA	NA
SFG22HDXL/SFG23HDXL	37"-50"	49"-50"	NA

Confidential



TITLE
SF, MONOPOLE, AMK, 12"-50", 4 SECTORS

SIZE
C

SCALE
1:12

DOCUMENT NO.
SF-MONO-AMK4-001



DRAWING			SHEET 3 OF 3
VERSION	STATUS	REVISION	
00	RE	A	