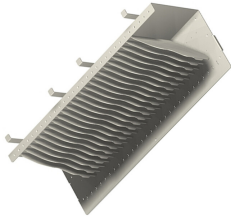


# MX6-24SPNL-L

---



OMX Fiber Splice Block, unloaded, for 24 splice wheels, left sided, putty white

## Product Classification

<b>Regional Availability</b>	EMEA   Latin America   North America
<b>Product Type</b>	Fiber splice block
<b>Product Brand</b>	OMX600®
<b>Product Series</b>	OMX

## General Specifications

<b>Functionality</b>	Splicing
<b>Application</b>	Used in OMX-style frames only
<b>Body Style</b>	Left orientation
<b>Cable Exit Location</b>	Side
<b>Color</b>	Putty white
<b>Color, front</b>	Putty white
<b>Growth Configuration</b>	Unloaded
<b>Interface, front</b>	Unloaded
<b>Patching Capacity, maximum</b>	0
<b>Rack Type</b>	OMX
<b>Splicing Capacity, maximum</b>	288

## Material Specifications

<b>Finish</b>	Powder coated
<b>Material Type</b>	Steel

## Packaging and Weights

<b>Packaging quantity</b>	1
---------------------------	---

## Regulatory Compliance/Certifications

# MX6-24SPNL-L

---

**Agency**

CHINA-ROHS  
REACH-SVHC  
ROHS  
UK-ROHS

**Classification**

Below maximum concentration value  
Compliant as per SVHC revision on [www.commscope.com/ProductCompliance](http://www.commscope.com/ProductCompliance)  
Compliant  
Compliant

