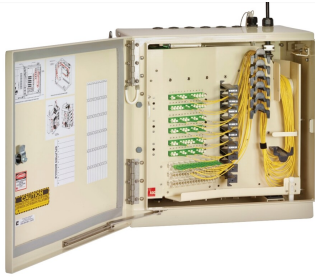


# FD3-MM144J00M0ME0B

---



Indoor FDH 3000 w/ 288f Shell, 144f distribution loaded, no splitters included, MPO distribution connectors, and a 24f Feeder using Spliced Stranded Loose Tube Pigtailes

Indoor FDH 3000 w/ 288f Shell, 144f distribution loaded, no splitters included, MPO distribution connectors, and a 24f Feeder using Spliced Stranded Loose Tube Pigtailes

## Product Classification

<b>Regional Availability</b>	North America
<b>Product Type</b>	Fiber distribution hub
<b>Product Series</b>	IFDH 3000

## General Specifications

<b>Functionality</b>	Patching   Splicing
<b>Adapters, quantity</b>	144
<b>Color</b>	Putty white
<b>Front Door Type</b>	Single hinged
<b>Interface</b>	SC/APC
<b>Mounting</b>	Wall
<b>Port, quantity</b>	144

## Material Specifications

<b>Finish</b>	Powder coated
<b>Material Type</b>	Aluminum

## Optical Specifications

<b>Fiber Mode</b>	Singlemode
-------------------	------------

## Environmental Specifications

<b>Environmental Space</b>	Indoor
----------------------------	--------

## Packaging and Weights

<b>Packaging quantity</b>	1
---------------------------	---

# FD3-MM144J00M0ME0B

---

## Regulatory Compliance/Certifications

### Agency

### Classification

CHINA-ROHS

Above maximum concentration value

REACH-SVHC

Compliant as per SVHC revision on [www.commscope.com/ProductCompliance](http://www.commscope.com/ProductCompliance)

ROHS

Compliant/Exempted

UK-ROHS

Compliant/Exempted

