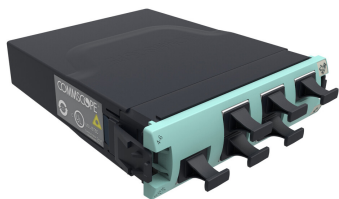


# 760200352 | 360CM12-4x6-LS



G2 4x6 Multimode OM4 Conversion Module, 6 MPO male ports

## Product Classification

<b>Regional Availability</b>	Asia   Australia/New Zealand   EMEA   Latin America   North America
<b>Portfolio</b>	CommScope®
<b>Product Type</b>	Fiber module

## General Specifications

<b>Functionality</b>	Breakout
<b>Adapters, quantity, front</b>	6
<b>Adapters, quantity, rear</b>	4
<b>Color, front</b>	Aqua
<b>Color, housing</b>	Black
<b>Color, rear</b>	Gray
<b>Data Module Type</b>	Standard
<b>Interface, front</b>	MPO
<b>Interface Feature, front</b>	Standard
<b>Interface, rear</b>	MPO
<b>Interface Feature, rear</b>	Male   Reduced footprint
<b>Polarity</b>	Method B
<b>Shuttered</b>	No
<b>Total Fibers, quantity</b>	48
<b>Total Ports, quantity, front</b>	6

## Dimensions

<b>Height</b>	27.94 mm   1.1 in
<b>Width</b>	91.44 mm   3.6 in
<b>Depth</b>	109.22 mm   4.3 in

## Optical Specifications

# 760200352 | 360CM12-4x6-LS

---

<b>Fiber Mode</b>	Multimode
<b>Fiber Type</b>	OM4, LazrSPEED® 550
<b>Insertion Loss Change, mating</b>	0.3 dB
<b>Insertion Loss Change, temperature</b>	0.3 dB
<b>Insertion Loss, maximum</b>	0.5 dB

## Environmental Specifications

<b>Safety Standard</b>	UL
------------------------	----

## Packaging and Weights

<b>Packaging quantity</b>	1
---------------------------	---

## Regulatory Compliance/Certifications

<b>Agency</b>	<b>Classification</b>
CHINA-ROHS	Below maximum concentration value
ISO 9001:2015	Designed, manufactured and/or distributed under this quality management system
REACH-SVHC	Compliant as per SVHC revision on <a href="http://www.commscope.com/ProductCompliance">www.commscope.com/ProductCompliance</a>
ROHS	Compliant
UK-ROHS	Compliant



## \* Footnotes

<b>Insertion Loss Change, mating</b>	Maximum insertion loss change after 500 matings
<b>Insertion Loss Change, temperature</b>	Maximum insertion loss change from -10 °C to +60 °C (+14 °F to +140 °F)