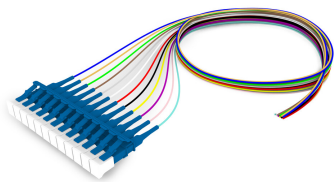


Base Product



Singlemode LC/UPC to Unconnectorized, Fiber Pigtail, 0.9 mm Tight Buffer, 12-Fiber Kit Blue - Aqua (1-12)

Product Classification

Regional Availability	Asia Australia/New Zealand Europe Latin America Middle East /Africa North America
Portfolio	CommScope®
Product Type	Fiber pigtail, unjacketed
Product Brand	SYSTIMAX InstaPATCH® 360
Product Series	FAW
Ordering Note	For lengths greater than 999 ft (304 m), orders must be in meters Minimum length may vary based on cable configuration

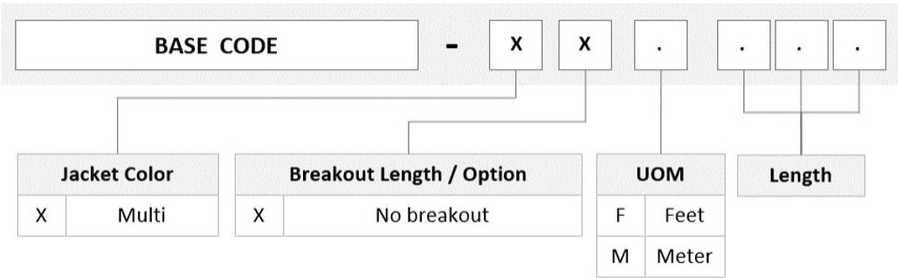
General Specifications

Color, boot A	Blue
Color, connector A	Blue
Interface, Connector A	LC/UPC
Interface, Connector B	Unterminated
Total Fibers, quantity	12

Dimensions

Cable Assembly Length Range (m)	1 – 20
Cable Assembly Length Range (ft)	1 – 66

Ordering Tree



Mechanical Specifications

Cable Retention Strength, maximum 1.00 lb @ 0 ° | 1.00 lb @ 90 °

Optical Specifications

Fiber Mode Singlemode
Fiber Type G.652.D | G.657.A1, TeraSPEED®
Insertion Loss, maximum, connector A 0.25 dB
Return Loss, minimum, connector A 55 dB

Environmental Specifications

Operating Temperature -10 °C to +60 °C (+14 °F to +140 °F)
Environmental Space Unrated

Regulatory Compliance/Certifications

Agency	Classification
ANATEL	Compliant
CHINA-ROHS	Below maximum concentration value
ISO 9001:2015	Designed, manufactured and/or distributed under this quality management system
REACH-SVHC	Compliant as per SVHC revision on www.commscope.com/ProductCompliance
ROHS	Compliant
UK-ROHS	Compliant

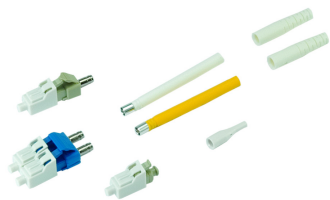


Included Products

460125289 – Behind The Wall Pre-Radiused LC Connector for 0.9 mm Fiber, single-

FAWLCUCOC

X-TB-8W mode
- TeraSPEED® 900µm Tight Buffered Fiber



Behind The Wall Pre-Radiused LC Connector for 0.9 mm Fiber, single-mode

Product Classification

Regional Availability	Asia Australia/New Zealand EMEA Latin America North America
Portfolio	CommScope®
Product Type	Fiber connector
Product Brand	LazrSPEED® OptiSPEED®

General Specifications

Body Style	BTW
Color	Blue
Ferrule Geometry	Pre-radiused
Interface	LC/UPC

Dimensions

Length	32 mm 1.26 in
Compatible Cable Diameter	0.9 mm 0.035 in

Material Specifications

Ferrule Material	Zirconia
------------------	----------

Mechanical Specifications

Cable Retention Strength, maximum	1.00 lb @ 0 °
-----------------------------------	---------------

Optical Specifications

Fiber Type	G.652.D and G.657.A1, TeraSPEED® OS2
Insertion Loss Change, mating	0.3 dB
Optical Components Standard	ANSI/TIA-568-C.3
Insertion Loss Change, temperature	0.3 dB
Insertion Loss, maximum	0.25 dB
Return Loss, minimum	50 dB

Packaging and Weights

Packaging quantity 1

Regulatory Compliance/Certifications

Agency	Classification
ISO 9001:2015	Designed, manufactured and/or distributed under this quality management system

* Footnotes

Insertion Loss Change, mating	TIA-568: Maximum insertion loss change after 500 matings
Insertion Loss Change, temperature	Maximum insertion loss change from -10 °C to +60 °C (+14 °F to +140 °F)

X-TB-8W

TeraSPEED® 900µm Tight Buffered Fiber

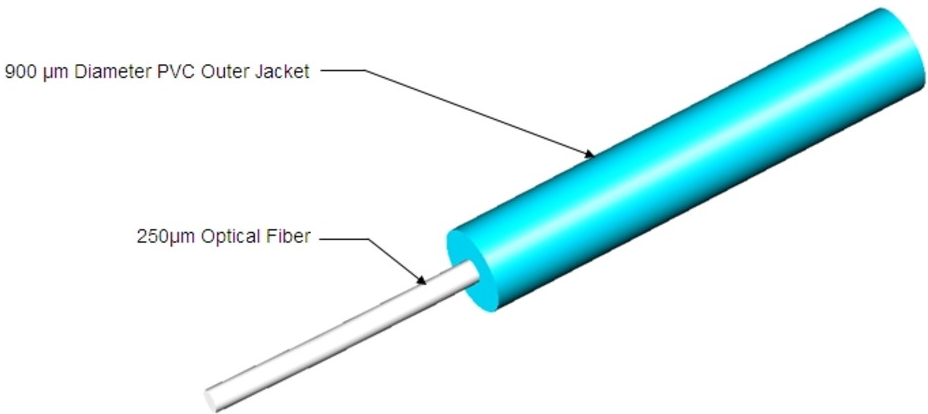
Product Classification

Regional Availability	Asia Australia/New Zealand EMEA Latin America North America
Portfolio	CommScope®
Product Type	Fiber indoor cable

General Specifications

Core Diameter	8.3 µm
----------------------	--------

Representative Image



Regulatory Compliance/Certifications

Agency	Classification
ISO 9001:2015	Designed, manufactured and/or distributed under this quality management system