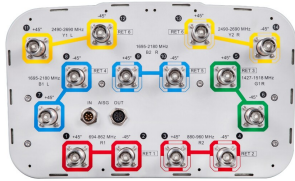


# EGYHHTT-65A-R6



14-port, 1.5m, multiband antenna, RF port assignments are as follows: R1 = 694–862, R2 = 880–960, G1 = 1427-1518, B1 & B2 = 1695–2180 and Y1 & Y2 = 2490-2690 MHz, 65° HPBW, 6x RET. Y1 & Y2 share a common RET

- Electrical tilt settings applicable to RF Ports R1, R2, G1, B1 & B2 can be set independently (See Array Layout and RET Table below)
- A common electrical tilt setting is shared by RF Ports Y1 & Y2
- All Internal RET actuators are connected in “Cascaded SRET” configuration

## General Specifications

|                                  |  |
|----------------------------------|--|
| Antenna Type                     | Sector   |
| Band                             | Multiband  |
| Grounding Type                   | RF connector inner conductor and body grounded to reflector and mounting bracket |
| Performance Note                 | Outdoor usage  |
| RF Connector Interface           | 4.3-10 Female  |
| RF Connector Location            | Bottom   |
| RF Connector Quantity, high band | 0  |
| RF Connector Quantity, mid band  | 10   |
| RF Connector Quantity, low band  | 4  |
| RF Connector Quantity, total     | 14   |

## Remote Electrical Tilt (RET) Information

|  |                                   |
|--|-----------------------------------|
| RET Hardware                             | CommRET v2                        |
| RET Interface                            | 8-pin DIN Female   8-pin DIN Male |
| RET Interface, quantity                  | 1 female   1 male                 |
| Input Voltage                            | 10–30 Vdc                         |
| Internal RET                             | Low band (2)   Mid band (4)       |
| Power Consumption, active state, maximum | 8 W                               |
| Power Consumption, idle state, maximum   | 1 W                               |
| Protocol                                 | 3GPP/AISG 2.0 (Single RET)        |

## Dimensions

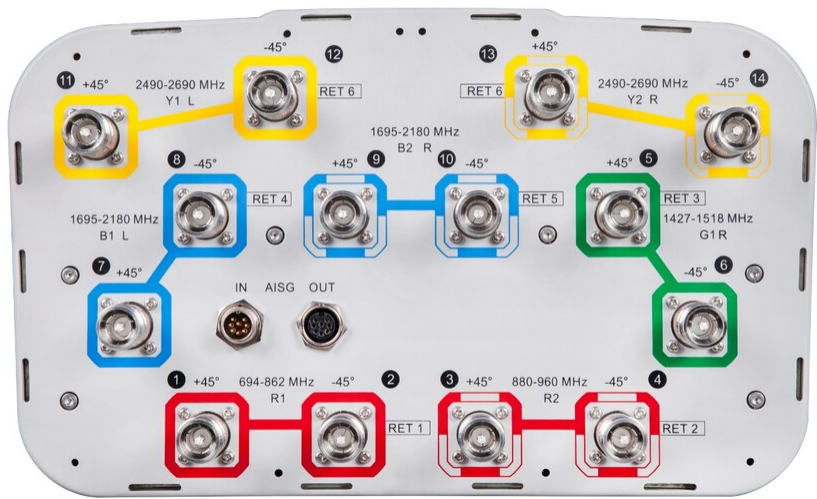
# EGYHHTT-65A-R6

|                          |                     |
|--------------------------|---------------------|
| Width                    | 350 mm   13.78 in   |
| Depth                    | 208 mm   8.189 in   |
| Length                   | 1499 mm   59.016 in |
| Net Weight, antenna only | 28.8 kg   63.493 lb |

## Array Layout

|  | Array | Freq (MHz) | Conns | RET (SRET) | AISG RET UID         |
|--|-------|------------|-------|------------|----------------------|
|  | R1    | 694-862    | 1-2   | 1          | CPxxxxxxxxxxxxxxxxR1 |
|  | R2    | 880-960    | 3-4   | 2          | CPxxxxxxxxxxxxxxxxR2 |
|  | G1    | 1427-1518  | 5-6   | 3          | CPxxxxxxxxxxxxxxxxG1 |
|  | B1    | 1695-2180  | 7-8   | 4          | CPxxxxxxxxxxxxxxxxB1 |
|  | B2    | 1695-2180  | 9-10  | 5          | CPxxxxxxxxxxxxxxxxB2 |
|  | Y1    | 2490-2690  | 11-12 | 6          | CPxxxxxxxxxxxxxxxxY1 |
|  | Y2    | 2490-2690  | 13-14 |            |                      |

## Port Configuration



# EGYHHTT-65A-R6

## Electrical Specifications

|                            |   |
|----------------------------|---|
| Impedance                  | 50 ohm  |
| Operating Frequency Band   | 1427 – 1518 MHz   1695 – 2180 MHz   2490 – 2690 MHz   694 – 862 MHz   880 – 960 MHz |
| Polarization               | ±45°  |
| Total Input Power, maximum | 800 W @ 50 °C   |

## Mechanical Specifications

|                                  |   |
|----------------------------------|---|
| Wind Loading @ Velocity, frontal | 239.0 N @ 150 km/h (53.7 lbf @ 150 km/h)  |
| Wind Loading @ Velocity, lateral | 201.0 N @ 150 km/h (45.2 lbf @ 150 km/h)  |
| Wind Loading @ Velocity, maximum | 507.0 N @ 150 km/h (114.0 lbf @ 150 km/h) |
| Wind Loading @ Velocity, rear    | 254.0 N @ 150 km/h (57.1 lbf @ 150 km/h)  |
| Wind Speed, maximum              | 241 km/h (150 mph)                        |

## Packaging and Weights

|                |                     |
|----------------|---------------------|
| Width, packed  | 456 mm   17.953 in  |
| Depth, packed  | 357 mm   14.055 in  |
| Length, packed | 1643 mm   64.685 in |
| Weight, gross  | 38.2 kg   84.216 lb |

## Regulatory Compliance/Certifications

| Agency        | Classification   |
|---------------|--|
| CE            | Compliant with the relevant CE product directives                              |
| CHINA-ROHS    | Above maximum concentration value  |
| ISO 9001:2015 | Designed, manufactured and/or distributed under this quality management system |
| ROHS          | Compliant/Exempted   |
| UK-ROHS       | Compliant/Exempted   |



## Included Products

|          |  |
|----------|--|
| BSAMNT-3 | – Wide Profile Antenna Downtilt Mounting Kit for 2.4 - 4.5 in (60 - 115 mm) OD round members. Kit contains one scissor top bracket set and one bottom bracket set. |
|----------|--|

## \* Footnotes

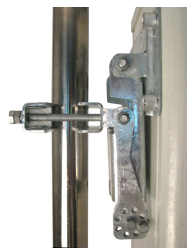
# EGYHHTT-65A-R6

---

**Performance Note**      Severe environmental conditions may degrade optimum performance



# BSAMNT-3



Wide Profile Antenna Downtilt Mounting Kit for 2.4 - 4.5 in (60 - 115 mm) OD round members. Kit contains one scissor top bracket set and one bottom bracket set.

## Product Classification

**Product Type** Downtilt mounting kit

## General Specifications

**Application** Outdoor

**Color** Silver

## Dimensions

**Compatible Diameter, maximum** 115 mm | 4.528 in

**Compatible Diameter, minimum** 60 mm | 2.362 in

**Weight, net** 6.2 kg | 13.669 lb

## Material Specifications

**Material Type** Galvanized steel

## Packaging and Weights

**Included** Brackets | Hardware

**Packaging quantity** 1

**Weight, gross** 6.4 kg | 14.11 lb

## Regulatory Compliance/Certifications

| Agency        | Classification   |
|---------------|--|
| CE            | Compliant with the relevant CE product directives  |
| CHINA-ROHS    | Below maximum concentration value  |
| ISO 9001:2015 | Designed, manufactured and/or distributed under this quality management system   |
| REACH-SVHC    | Compliant as per SVHC revision on <a href="http://www.andrew.com/ProductCompliance">www.andrew.com/ProductCompliance</a> |
| ROHS          | Compliant  |
| UK-ROHS       | Compliant  |

