

# 5NPX1006F-V2



10-port multibeam antenna, 10x 1710–2180 MHz, 5x 10-14° HPBW, fixed electrical tilt

## General Specifications

Antenna Type	Multibeam
Band	Single band
Color	Light Gray (RAL 7035)
Grounding Type	RF connector inner conductor and body grounded to reflector and mounting bracket
Performance Note	Outdoor usage
Radome Material	ASA, UV stabilized
Radiator Material	Brass   Low loss circuit board
Reflector Material	Aluminum
RF Connector Interface	4.3-10 Female
RF Connector Location	Bottom
RF Connector Quantity, high band	10
RF Connector Quantity, mid band	0
RF Connector Quantity, low band	0
RF Connector Quantity, total	10

## Dimensions

Width	864 mm   34.016 in
Depth	202 mm   7.953 in
Length	889 mm   35 in
Net Weight, without mounting kit	30 kg   66.139 lb

## Electrical Specifications

Impedance	50 ohm
Operating Frequency Band	1710 – 2180 MHz
Polarization	±45°

# 5NPX1006F-V2

## Electrical Specifications

Frequency Band, MHz	1710–1920	1920–2180
Gain, dBi	21.7	22.3
Beamwidth, Horizontal, degrees	13	12
Beamwidth, Vertical, degrees	11.9	10.9
Beam Tilt, degrees	6	6
USLS (First Lobe), dB	14	16
Front-to-Back Ratio at 180°, dB	32	34
Isolation, Same Beam, dB	25	25
VSWR   Return loss, dB	1.43   15.0	1.43   15.0
PIM, 3rd Order, 2 x 20 W, dBc	-150	-150
Input Power per Port, maximum, watts	300	300

## Mechanical Specifications

Wind Loading @ Velocity, frontal	931.0 N @ 150 km/h (209.3 lbf @ 150 km/h)
Wind Loading @ Velocity, lateral	113.0 N @ 150 km/h (25.4 lbf @ 150 km/h)
Wind Loading @ Velocity, rear	931.0 N @ 150 km/h (209.3 lbf @ 150 km/h)
Wind Speed, maximum	250 km/h (155 mph)

## Packaging and Weights

Width, packed	977 mm   38.465 in
Depth, packed	349 mm   13.74 in
Length, packed	1038 mm   40.866 in
Weight, gross	47 kg   103.617 lb

## Regulatory Compliance/Certifications

Agency	Classification
CHINA-ROHS	Below maximum concentration value
ISO 9001:2015	Designed, manufactured and/or distributed under this quality management system
REACH-SVHC	Compliant as per SVHC revision on <a href="http://www.andrew.com/ProductCompliance">www.andrew.com/ProductCompliance</a>
ROHS	Compliant
UK-ROHS	Compliant



# 5NPX1006F-V2

---

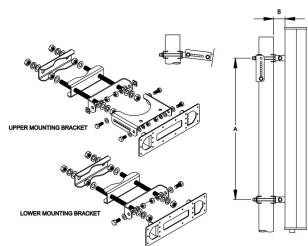
## Included Products

- T-045-GL-E – Adjustable Tilt Pipe Mounting Kit for 2.0"-4.5" (60-115mm) OD round members for panel antennas. Includes 2 clamp sets.

## \* Footnotes

**Performance Note** Severe environmental conditions may degrade optimum performance

# T-045-GL-E



Adjustable Tilt Pipe Mounting Kit for 2.0"-4.5" (60-115mm) OD round members for panel antennas. Includes 2 clamp sets.

## Product Classification

**Product Type** Adjustable tilt mounting kit

## General Specifications

**Application** Outdoor

**Color** Silver

## Dimensions

**Compatible Length, maximum** 1200 mm | 47.244 in

**Compatible Length, minimum** 850 mm | 33.465 in

**Compatible Diameter, maximum** 115 mm | 4.528 in

**Compatible Diameter, minimum** 60 mm | 2.362 in

**Antenna-to-Pipe Distance** 85 mm | 3.346 in

**Bracket-to-Bracket Distance** 761 mm | 29.961 in

**Weight, net** 6 kg | 13.228 lb

## Material Specifications

**Material Type** Galvanized steel

## Mechanical Specifications

**Mechanical Tilt** 0°–10°

## Packaging and Weights

**Included** Brackets | Hardware

**Packaging quantity** 1

## Regulatory Compliance/Certifications

Agency	Classification
CHINA-ROHS	Below maximum concentration value

# T-045-GL-E

---

ISO 9001:2015	Designed, manufactured and/or distributed under this quality management system
REACH-SVHC	Compliant as per SVHC revision on <a href="http://www.andrew.com/ProductCompliance">www.andrew.com/ProductCompliance</a>
ROHS	Compliant
UK-ROHS	Compliant

