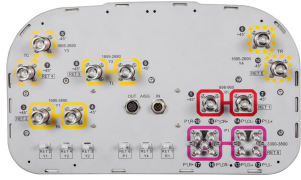


RV4S4-65A-R6



18-port sector antenna, 2x 698–960, 8x 1695-2690 and 8x 3300–3800 MHz, 65° HPBW, 6x RET

- Beam-forming weighting table available upon request
- M-LOC cluster connector for 3.3-3.8GHz, equipped with calibration port
- Provide a future-ready antenna solution with flexibility to reassign antenna, support 2T2R at 698-960MHz, 4T4R at 1695-2690MHz, and 8T8R at 3300-3800MHz
- Combination of FDD MIMO antenna and 3.5GHz 8T8R TDD beam forming antenna, all in one for 5G ready
- Retractable tilt indicator rods

General Specifications

| | |
|---|--|
| Antenna Type | Sector |
| Band | Multiband |
| Calibration Connector Interface | M-LOC |
| Calibration Connector Quantity | 1 |
| Color | Light Gray (RAL 7035) |
| Grounding Type | RF connector inner conductor and body grounded to reflector and mounting bracket |
| Performance Note | Outdoor usage |
| Radome Material | Fiberglass, UV resistant |
| Radiator Material | Low loss circuit board |
| Reflector Material | Aluminum |
| RF Connector Interface | 4.3-10 Female M-LOC |
| RF Connector Location | Bottom |
| RF Connector Quantity, high band | 16 |
| RF Connector Quantity, mid band | 0 |
| RF Connector Quantity, low band | 2 |
| RF Connector Quantity, total | 18 |

Remote Electrical Tilt (RET) Information

| | |
|--------------------------------|-----------------------------------|
| RET Hardware | CommRET v2 |
| RET Interface | 8-pin DIN Female 8-pin DIN Male |
| RET Interface, quantity | 1 female 1 male |

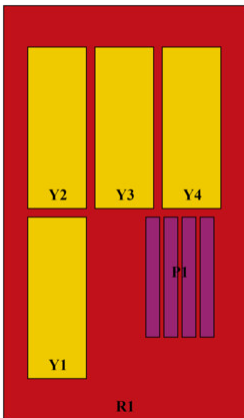
RV4S4-65A-R6

| | |
|--|------------------------------|
| Input Voltage | 10–30 Vdc |
| Internal RET | High band (5) Low band (1) |
| Power Consumption, idle state, maximum | 1 W |
| Power Consumption, normal conditions, maximum | 8 W |
| Protocol | 3GPP/AISG 2.0 (Single RET) |

Dimensions

| | |
|---|---------------------|
| Width | 395 mm 15.551 in |
| Depth | 228 mm 8.976 in |
| Length | 1600 mm 62.992 in |
| Net Weight, without mounting kit | 28.6 kg 63.052 lb |
| TDD Column Spacing | 42 mm 1.654 in |

Array Layout

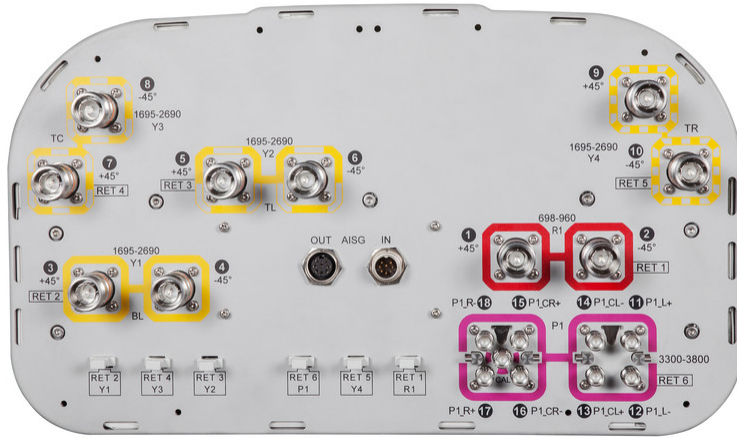


| Array ID | Frequency (MHz) | RF Connector | RET (SRET) | AISG RET UID |
|----------|-----------------|--------------|------------|----------------------|
| R1 | 698-960 | 1 - 2 | 1 | CPxxxxxxxxxxxxxxxxR1 |
| Y1 | 1695-2690 | 3 - 4 | 2 | CPxxxxxxxxxxxxxxxxY1 |
| Y2 | 1695-2690 | 5 - 6 | 3 | CPxxxxxxxxxxxxxxxxY2 |
| Y3 | 1695-2690 | 7 - 8 | 4 | CPxxxxxxxxxxxxxxxxY3 |
| Y4 | 1695-2690 | 9 - 10 | 5 | CPxxxxxxxxxxxxxxxxY4 |
| P1 | 3300-3800 | 11 - 18 | 6 | CPxxxxxxxxxxxxxxxxP1 |

(Sizes of colored boxes are not true depictions of array sizes)

Port Configuration

RV4S4-65A-R6



Electrical Specifications

| | |
|-----------------------------------|---|
| Impedance | 50 ohm |
| Operating Frequency Band | 1695 – 2690 MHz 3300 – 3800 MHz 698 – 960 MHz |
| Polarization | ±45° |
| Total Input Power, maximum | 900 W @ 50 °C |

Electrical Specifications

| | R1 | R1 | Y1-Y4 | Y1-Y4 | Y1-Y4 | P1 | P1 |
|--|----------------|----------------|------------------|------------------|------------------|------------------|------------------|
| Frequency Band, MHz | 698-890 | 890-960 | 1695-1920 | 1920-2200 | 2300-2690 | 3300-3600 | 3600-3800 |
| Gain, dBi | 14.9 | 14.9 | 15.4 | 16.1 | 16.2 | 15 | 15.1 |
| Beamwidth, Horizontal, degrees | 67 | 69 | 67 | 64 | 65 | 93 | 87 |
| Beamwidth, Vertical, degrees | 13.1 | 11.4 | 11.1 | 10.1 | 8.6 | 7.2 | 6.7 |
| Beam Tilt, degrees | 2-16 | 2-16 | 2-12 | 2-12 | 2-12 | 2-12 | 2-12 |
| USLS (First Lobe), dB | 21 | 18 | 15 | 17 | 19 | 14 | 14 |
| Front-to-Back Ratio at 180°, dB | 36 | 32 | 31 | 31 | 30 | 33 | 33 |
| Coupling level, Amp, Antenna port to Cal port, dB | | | | | | 26 | 26 |
| Coupling level, max Amp Δ, | | | | | | ±2 | ±2 |

RV4S4-65A-R6

| | | | | | | | |
|--|----------|----------|----------|----------|----------|----------|----------|
| Antenna port to Cal port, dB | | | | | | | |
| Coupler, max Amp Δ, Antenna port to Cal port, dB | | | | | | 0.9 | 0.9 |
| Coupler, max Phase Δ, Antenna port to Cal port, degrees | | | | | | 7 | 7 |
| Isolation, Cross Polarization, dB | 25 | 25 | 25 | 25 | 25 | 25 | 25 |
| Isolation, Inter-band, dB | 28 | 28 | 25 | 25 | 25 | 25 | 25 |
| VSWR Return loss, dB | 1.5 14.0 | 1.5 14.0 | 1.5 14.0 | 1.5 14.0 | 1.5 14.0 | 1.5 14.0 | 1.5 14.0 |
| PIM, 3rd Order, 2 x 20 W, dBc | -150 | -150 | -150 | -150 | -150 | -140 | -140 |
| Input Power per Port at 50°C, maximum, watts | 300 | 300 | 250 | 250 | 250 | 75 | 75 |

Electrical Specifications, Broadcast 65°

| | | |
|---|------------------|------------------|
| Frequency Band, MHz | 3300-3600 | 3600-3800 |
| Gain, dBi | 16 | 16.1 |
| Beamwidth, Horizontal, degrees | 60 | 61 |
| Beamwidth, Horizontal Tolerance, degrees | ±4.7 | ±3.3 |

Electrical Specifications, Service Beam

| | | |
|--|------------------|------------------|
| Frequency Band, MHz | 3300-3600 | 3600-3800 |
| Steered 0° Gain, dBi | 19.2 | 19.4 |
| Steered 0° Gain Tolerance, dBi | ±0.4 | ±0.5 |
| Steered 0° Beamwidth, Horizontal, degrees | 27 | 26 |
| Steered 13° USLS (First Lobe), dB | 4 | 5 |
| Steered 30° Gain, dBi | 18.8 | 18.9 |
| Steered 30° Gain Tolerance, dBi | ±0.4 | ±0.6 |
| Steered 30° Beamwidth, Horizontal, degrees | 28 | 27 |
| Steered 42° Front-to-Back Total Power at 180° ± 30°, dB | 4 | 6 |

Electrical Specifications, Soft Split

| | | |
|----------------------------|------------------|------------------|
| Frequency Band, MHz | 3300-3600 | 3600-3800 |
|----------------------------|------------------|------------------|

RV4S4-65A-R6

| | | |
|---------------------------------------|------|------|
| Gain, dBi | 18.7 | 19.2 |
| Beamwidth, Horizontal, degrees | 32 | 28 |
| CPR at Beampeak, dB | 18 | 15 |
| Horizontal Sidelobe, dB | 15 | 15 |

Mechanical Specifications

| | |
|---|---|
| Effective Projective Area (EPA), frontal | 0.29 m ² 3.122 ft ² |
| Effective Projective Area (EPA), lateral | 0.21 m ² 2.26 ft ² |
| Mechanical Tilt Range | 0°–18° |
| Wind Loading @ Velocity, frontal | 312.0 N @ 150 km/h (70.1 lbf @ 150 km/h) |
| Wind Loading @ Velocity, lateral | 226.0 N @ 150 km/h (50.8 lbf @ 150 km/h) |
| Wind Loading @ Velocity, maximum | 533.0 N @ 150 km/h (119.8 lbf @ 150 km/h) |
| Wind Loading @ Velocity, rear | 319.0 N @ 150 km/h (71.7 lbf @ 150 km/h) |
| Wind Speed, maximum | 241 km/h (150 mph) |

Packaging and Weights

| | |
|-----------------------|---------------------|
| Width, packed | 505 mm 19.882 in |
| Depth, packed | 386 mm 15.197 in |
| Length, packed | 1733 mm 68.228 in |
| Weight, gross | 41.8 kg 92.153 lb |

Regulatory Compliance/Certifications

| Agency | Classification |
|---------------|--|
| CHINA-ROHS | Above maximum concentration value |
| ISO 9001:2015 | Designed, manufactured and/or distributed under this quality management system |
| ROHS | Compliant/Exempted |
| UK-ROHS | Compliant/Exempted |



Included Products

- BSAMNT-3 – Wide Profile Antenna Downtilt Mounting Kit for 2.4 - 4.5 in (60 - 115 mm) OD round members. Kit contains one scissor top bracket set and one bottom bracket set.

* Footnotes

RV4S4-65A-R6

Performance Note

Severe environmental conditions may degrade optimum performance

BSAMNT-3



Wide Profile Antenna Downtilt Mounting Kit for 2.4 - 4.5 in (60 - 115 mm) OD round members. Kit contains one scissor top bracket set and one bottom bracket set.

Product Classification

Product Type Downtilt mounting kit

General Specifications

Application Outdoor

Color Silver

Dimensions

Compatible Diameter, maximum 115 mm | 4.528 in

Compatible Diameter, minimum 60 mm | 2.362 in

Weight, net 6.2 kg | 13.669 lb

Material Specifications

Material Type Galvanized steel

Packaging and Weights

Included Brackets | Hardware

Packaging quantity 1

Weight, gross 6.4 kg | 14.11 lb

Regulatory Compliance/Certifications

| Agency | Classification |
|---------------|--|
| CE | Compliant with the relevant CE product directives |
| CHINA-ROHS | Below maximum concentration value |
| ISO 9001:2015 | Designed, manufactured and/or distributed under this quality management system |
| REACH-SVHC | Compliant as per SVHC revision on www.andrew.com/ProductCompliance |
| ROHS | Compliant |
| UK-ROHS | Compliant |

BSAMNT-3

