

EGR-65D-R3N43



6-port sector antenna, 2x 694-862, 2x 880-960, 2x 694-960, 65° HPBW, 3 x RET

- Retractable tilt indicator rods
- All Internal RET actuators are connected in “Cascaded SRET” configuration
- Antenna shape optimized for wind load reduction

General Specifications

Antenna Type	Sector
Band	Multiband
Color	Light Gray (RAL 7035)
Grounding Type	RF connector inner conductor and body grounded to reflector and mounting bracket
Performance Note	Outdoor usage
Radome Material	Fiberglass, UV resistant
Reflector Material	Aluminum
RF Connector Interface	4.3-10 Female
RF Connector Location	Bottom
RF Connector Quantity, high band	0
RF Connector Quantity, mid band	0
RF Connector Quantity, low band	6
RF Connector Quantity, total	6

Remote Electrical Tilt (RET) Information

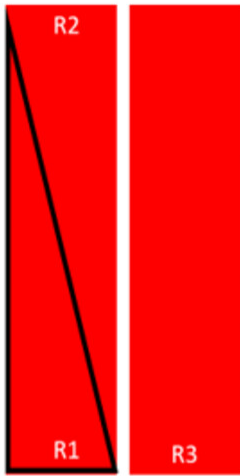
RET Hardware	CommRET v2
RET Interface	8-pin DIN Female 8-pin DIN Male
RET Interface, quantity	2 female 2 male
Input Voltage	10-30 Vdc
Internal RET	Low band (3)
Power Consumption, active state, maximum	8 W
Power Consumption, idle state, maximum	1 W
Protocol	3GPP/AISG 2.0 (Single RET)

EGR-65D-R3N43

Dimensions

Width	430 mm 16.929 in
Depth	197 mm 7.756 in
Length	2769 mm 109.016 in
Net Weight, without mounting kit	45.5 kg 100.31 lb

Array Layout



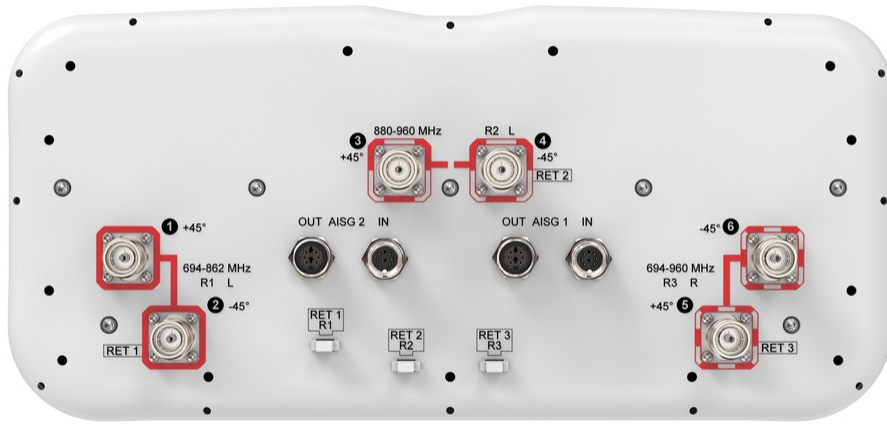
Array	Freq (MHz)	Conns	RET (SRET)	AISG RET UID
R1	694-862	1-2	1	CPxxxxxxxxxxxxxxxxR1
R2	880-960	3-4	2	CPxxxxxxxxxxxxxxxxR2
R3	694-960	5-6	3	CPxxxxxxxxxxxxxxxxR3

Left Bottom Right

(Sizes of colored boxes are not true depictions of array sizes)

Port Configuration

EGR-65D-R3N43



Electrical Specifications

Impedance	50 ohm
Operating Frequency Band	694 – 862 MHz 694 – 960 MHz 880 – 960 MHz
Polarization	±45°
Total Input Power, maximum	700 W @ 50 °C

Electrical Specifications

	R1	R2	R3
Frequency Band, MHz	694–862	880–960	694–960
Gain, dBi	15.8	16.3	16.7
Beamwidth, Horizontal, degrees	59	53	57
Beamwidth, Vertical, degrees	7.3	6.2	6.9
Beam Tilt, degrees	2–12	2–12	2–12
USLS (First Lobe), dB	16	16	14
Front-to-Back Ratio at 180°, dB	29	25	27
Isolation, Cross Polarization, dB	27	27	27
Isolation, Inter-band, dB	27	27	27
VSWR Return loss, dB	1.5 14.0	1.5 14.0	1.5 14.0
PIM, 3rd Order, 2 x 20 W, dBc	-153	-153	-153
Input Power per Port at 50°C, maximum, watts	250	250	250

EGR-65D-R3N43

Mechanical Specifications

Wind Loading @ Velocity, frontal	680.0 N @ 150 km/h (152.9 lbf @ 150 km/h)
Wind Loading @ Velocity, lateral	347.0 N @ 150 km/h (78.0 lbf @ 150 km/h)
Wind Loading @ Velocity, maximum	1,020.0 N @ 150 km/h (229.3 lbf @ 150 km/h)
Wind Loading @ Velocity, rear	434.0 N @ 150 km/h (97.6 lbf @ 150 km/h)
Wind Speed, maximum	241 km/h (150 mph)

Packaging and Weights

Width, packed	530 mm 20.866 in
Depth, packed	356 mm 14.016 in
Length, packed	2897 mm 114.055 in
Weight, gross	65.7 kg 144.844 lb

Regulatory Compliance/Certifications

Agency	Classification
CHINA-ROHS	Below maximum concentration value
ISO 9001:2015	Designed, manufactured and/or distributed under this quality management system
REACH-SVHC	Compliant as per SVHC revision on www.commscope.com/ProductCompliance
ROHS	Compliant
UK-ROHS	Compliant



Included Products

BSAMNT-4	-	Wide Profile Antenna Downtilt Mounting Kit for 2.4 - 4.5 in (60 - 115 mm) OD round members. Kit contains one scissor top bracket set and one bottom bracket set.
BSAMNT-M4	-	Middle Downtilt Mounting Kit for Long Antennas for 2.4 - 4.5 in (60 - 115 mm) OD round members. Kit contains one scissor bracket set.

* Footnotes

Performance Note	Severe environmental conditions may degrade optimum performance
-------------------------	---