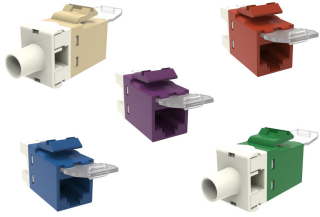


1375187

Base Product



SL-Series Modular Jack, RJ45, Cat6 Unshielded, with Dust Cover

Product Classification

Regional Availability	Asia Australia/New Zealand EMEA Latin America
Portfolio	NETCONNECT®
Product Type	Modular jack
Product Series	SL Series

General Specifications

ANSI/TIA Category	6
Cable Type	Unshielded
Conductor Type	Solid Stranded
Mounting	SL Series faceplates and panels
Outlet Type	Standard
Termination Punchdowns, minimum	200 times
Termination Tool	SL Termination tool
Termination Type	IDC
Transmission Standards	ANSI/TIA-568-C.2 ISO/IEC 11801 Class E
Wiring	T568A T568B

Dimensions

Panel Cutout, recommended	14.78 x 20.07 mm (0.58 x 0.79 in)
Panel Thickness, recommended	1.6 mm 0.063 in
Height	16.26 mm 0.64 in
Width	14.48 mm 0.57 in
Depth	30.48 mm 1.2 in
Compatible Insulated Conductor Diameter, maximum	1.45 mm 0.057 in
Contact Plating Thickness	1.27 µm

1375187

Compatible Conductor Gauge, solid 24–22 AWG

Compatible Conductor Gauge, stranded 26–24 AWG

Electrical Specifications

Remote Powering Fully supports the safe delivery of power over LAN cabling described by IEEE 802.3bt (Type 4) and complies with the unmating under electrical load requirements prescribed by IEC 60512-99-002

PoE Durability Supports IEEE 802.3bt Type 4 (90 W) applications after 3000 plug to jack mating cycles

Safety Voltage Rating 150 Vac

Material Specifications

Contact Base Material Beryllium copper

Contact Plating Material Gold

Material Type Polycarbonate

Mechanical Specifications

Plug Retention Force, minimum 89 N | 20.008 lbf

Plug to Jack Mating Cycles Complies to IEC 60603-7 series

Environmental Specifications

Operating Temperature -40 °C to +70 °C (-40 °F to +158 °F)

Flammability Rating UL 94 V-0

Safety Standard CSA | cUL