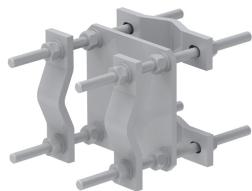


CO-200



Crossover Plate, joins 2 in to 5 in OD round members (Pipe not included)

Product Classification

Product Type Clamp plate

General Specifications

Mounting Crossover plate

Tower Taper Non-tapered

Dimensions

Height 254 mm | 10 in

Width 304.8 mm | 12 in

Length 203.2 mm | 8 in

Mounting Diameter, maximum 127 mm | 5 in

Mounting Diameter, minimum 50.8 mm | 2 in

Material Specifications

Material Type Hot dip galvanized steel

Packaging and Weights

Included Clamps | Plates

Packaging quantity 1

Weight, net 9.8 kg | 21.605 lb

Regulatory Compliance/Certifications

| Agency | Classification |
|---------------|--|
| ISO 9001:2015 | Designed, manufactured and/or distributed under this quality management system |