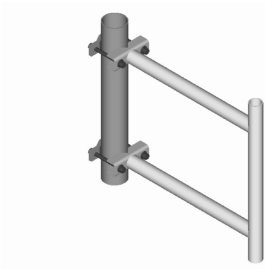


# S-300

---



Stand-Off Bracket, 36 in, includes pipe

## Product Classification

**Product Type** Stand-off mount

## General Specifications

**Mounting** Straight or tapered legs up to 88.9 mm (3-1/2 in) OD, clamps included

**Pipe, quantity** 1

**Tower Taper** Non-tapered | Tapered

## Dimensions

**Height** 609.6 mm | 24 in

**Width** 127 mm | 5 in

**Length** 914.4 mm | 36 in

**Pipe Length** 609.6 mm | 24 in

**Stand-off Distance** 914.4 mm | 36 in

## Material Specifications

**Material Type** Hot dip galvanized steel

## Mechanical Specifications

**Wind Rating Test Method** TIA/EIA-222

## Packaging and Weights

**Included** Clamps | Stand-off

**Packaging quantity** 1

**Weight, net** 20.73 kg | 45.702 lb

## Regulatory Compliance/Certifications

Agency	Classification
--------	----------------

# S-300

---

ISO 9001:2015

Designed, manufactured and/or distributed under this quality management system

