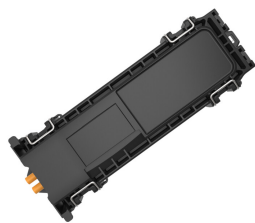


SRC1-U5A1B1BE000



NOVUX™ Specialty Range Closure 50, splice only, no adapters, no splitters, 12 splices, SMOUV® 45mm splice protectors, black, 2x NVX-CR-TI-SM-NN cable retention

- Modern drop solution offering providers the agility and flexibility to use it in last-mile fiber network applications, both above and below ground
- Protected from harsh conditions by CommScope's Octopus gel sealing technology
- Agnostic to connectivity technologies: splice, connector, field-installable connector for agility and flexibility
- Identification plate for either QR code or customer logo
- QR code and CommScope cTrak® app for one-click access to all product information

Product Classification

Regional Availability	Asia EMEA Latin America
Regional Availability Note	Contact your local CommScope representative for specific availability
Product Type	Single-ended, rectangular fiber closure
Product Brand	NOVUX™
Product Series	SRC50

General Specifications

Cable Capacity, Drop	2 Flat 8.0 x 4.5 mm (0.30 x 0.17 in) 2 Round 1.2–8.0 mm (0.05–0.31 in)
Cable Ports Quantity, total	2 multi-out ports (4 cables)
Cable Sealing Type	Compressed gel
Cable Termination Attachments, quantity	2
Closure Sealing Type	Hinged with latch
Closure Style	Single-ended
Color	Black
Mounting	Handhole Partially buried Pedestal Wall/Pole Mount, mounting kit included
Network Area Type	Drop
Port Type	No adapter No adapter
Port, quantity	0
Splice Tray Included, quantity	1
Splice Tray Type Included	12-way, heat shrink

SRC1-U5A1B1BE000

Splicing Capacity, maximum	12
Splicing Capacity, Single Fusion, maximum	12
Splicing Type, Supported	Single fusion
Split Ratio	Symmetrical
Splitter Type	No splitter
Splitter, quantity	0

Dimensions

Height	267 mm 10.512 in
Width	87 mm 3.425 in
Depth	49 mm 1.929 in
Cable Entry Drop Port Diameter	8 mm (0.31 in) mm

Ordering Tree

SRC1-U5A1B1BE000

Size and color

1	50 Black
2	50 Gray

Sealing

U	Underground, IP68
---	-------------------

Connector type*

1	SC/UPC
2	LC/UPC
3	SC/APC
4	LC/APC
5	Splice only

Number of adapters

A	None
K	1
B	2

Cable retention

* See complete details at the bottom of the page.

Splice protector type

A	ANT/SMOUV 30
B	SMOUV 45

Splitters

1	None
---	------

Number of splices

B	12
---	----






Number of pigtails

1	None
A	1
2	2
B	3
3	4

Cable retention^a

A	None
B	NVX-CR-MC-FT-NN
C	NVX-CR-MC-RD-NN
D	NVX-CR-SA-SM-NN
E	NVX-CR-TI-SM-NN
F	NVX-CR-DU-FL-NN

Cable Termination Unit (CTU) options

<div><div>B</div></div> <div>NVX-CR-MC-FT-NN<ul style="list-style-type: none">Flat cableMetal clipRange 3 x 5 to 4 x 8 mm</div>	<div><div>C</div></div> <div>NVX-CR-MC-RD-NN<ul style="list-style-type: none">Round cableMetal clipRange 4 to 6.2 mm</div>	<div><div>D</div></div> <div>NVX-CR-SA-SM-NN<ul style="list-style-type: none">Round cableDia up to 8 mmStrength memberAramid yarnsSingle layer</div>	<div><div>E</div></div> <div>NVX-CR-TI-SM-NN<ul style="list-style-type: none">Round cableDia up to 8 mmAramid yarnsSingle layer</div>	<div><div>F</div></div> <div>NVX-CR-DU-FL-NN<ul style="list-style-type: none">Round cableDia up to 6.2 mmAramid yarnsDual layerCompact length</div>
--	---	---	---	--

Material Specifications

Material Type

Impact-resistant polymer

Optical Specifications

Fiber Type

G.657.A1 | G.657.A2 | G.657.B3

Environmental Specifications

Operating Temperature

-40 °C to +70 °C (-40 °F to +158 °F)

Environmental Space

Above ground | Below ground | Direct burial

Qualification Standards

IEC 60529, IP68 + 2 m waterhead | IEC 61753-1, category G

UV Resistance

UV stabilized

Page 3 of 4

©2024 CommScope, Inc. All rights reserved. CommScope and the CommScope logo are registered trademarks of CommScope and/or its affiliates in the U.S. and other countries. For additional trademark information see <https://www.commscope.com/trademarks>. All product names, trademarks and registered trademarks are property of their respective owners. Revised: May 17, 2024

COMMScope®

SRC1-U5A1B1BE000

Water Resistance

Flash test valve at 2 psi (20 kPa)

Packaging and Weights

Packaging quantity

10

Packaging Type

Box | Carton

Regulatory Compliance/Certifications

Agency

Classification

ISO 9001:2015

Designed, manufactured and/or distributed under this quality management system

Included Products

NVX-CR-TI-SM-NN

–

NOVUX™ Cable Termination Unit (CTU) for round cables up to 8 mm diameter, with aramide
yarns, single layer