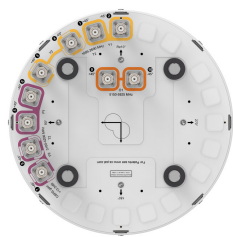


# VVSSP-180HS-F2



10-port small cell antenna, 4x 1695–2690, 4x 3100–4200 MHz, 2x 5150–5925 MHz, heart shape pattern, fixed tilt.

- Broadband Mid Band arrays (AWS/PCS/WCS/Band 41) with 4T4R (4X MIMO) capability
- Broadband performance – optimized for CBRS and C-bands
- 4 high gain ports for the 3GHz band

## General Specifications

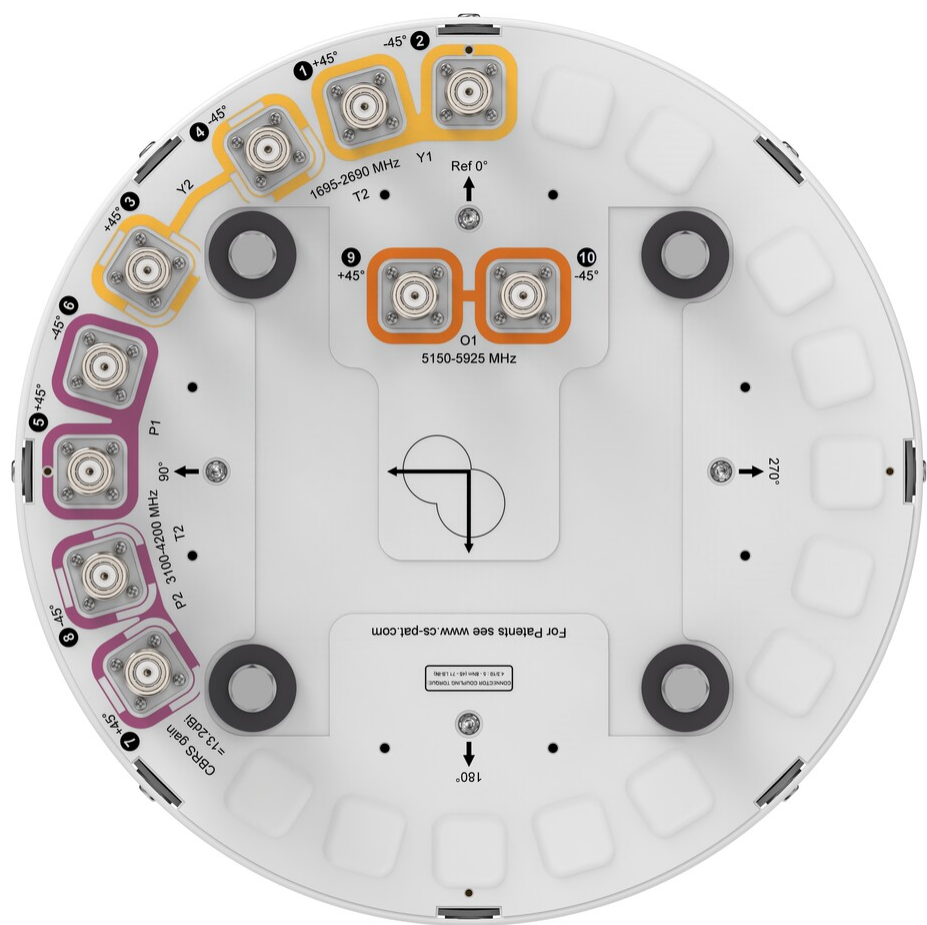
Antenna Type	Small Cell
Band	Multiband
Color	Light Gray (RAL 7035)
Grounding Type	RF connector inner conductor and body grounded to reflector and mounting bracket
Performance Note	Outdoor usage
Radome Material	ASA, UV stabilized
Radiator Material	Low loss circuit board
Reflector Material	Aluminum
RF Connector Interface	4.3-10 Female
RF Connector Location	Bottom
RF Connector Quantity, high band	10
RF Connector Quantity, mid band	0
RF Connector Quantity, low band	0
RF Connector Quantity, total	10

## Dimensions

Width	370 mm   14.567 in
Depth	370 mm   14.567 in
Length	610 mm   24.016 in
Net Weight, without mounting kit	15 kg   33.069 lb

## Port Configuration

# VVSSP-180HS-F2



## Electrical Specifications

Impedance	50 ohm
Operating Frequency Band	1695 – 2690 MHz   3100 – 4200 MHz   5150 – 5925 MHz
Polarization	±45°
Total Input Power, maximum	600 W

## Electrical Specifications

Frequency Band, MHz	1695–1920	1920–2200	2300–2690	3100–3550	3550–3700	3700–4200	5150–5925
Gain, dBi	11	11.5	11.9	12.7	13.2	12.9	3.7
Beamwidth, Horizontal, degrees	81.2	88.9	79.3	80.4	86.4	78.5	360
Beamwidth, Vertical, degrees	20.6	18.6	15.6	10	9.6	8.3	24.4

# VVSSP-180HS-F2

Beam Tilt, degrees	2	2	2	2	2	2	2
Isolation, Cross Polarization, dB	25	25	25	25	25	25	25
Isolation, Inter-band, dB	28	28	28	28	28	28	28
VSWR   Return loss, dB	1.5   14.0	1.5   14.0	1.5   14.0	1.5   14.0	1.5   14.0	1.5   14.0	1.5   14.0
PIM, 3rd Order, 2 x 20 W, dBc	-153	-153	-153	-145	-145	-145	
Input Power per Port, maximum, watts	200	200	200	150	150	150	10
Input Power per Port at 50°C, maximum, watts	150	150	150	100	100	100	5

## Mechanical Specifications

Wind Loading @ Velocity, frontal	129.0 N @ 150 km/h (29.0 lbf @ 150 km/h)
Wind Loading @ Velocity, lateral	129.0 N @ 150 km/h (29.0 lbf @ 150 km/h)
Wind Loading @ Velocity, maximum	129.0 N @ 150 km/h (29.0 lbf @ 150 km/h)
Wind Loading @ Velocity, rear	129.0 N @ 150 km/h (29.0 lbf @ 150 km/h)
Wind Speed, maximum	241 km/h (150 mph)

## Packaging and Weights

Width, packed	478 mm   18.819 in
Depth, packed	464 mm   18.268 in
Length, packed	894 mm   35.197 in
Weight, gross	19.4 kg   42.77 lb

## Regulatory Compliance/Certifications

Agency	Classification
CHINA-ROHS	Below maximum concentration value
ISO 9001:2015	Designed, manufactured and/or distributed under this quality management system
REACH-SVHC	Compliant as per SVHC revision on <a href="http://www.commscope.com/ProductCompliance">www.commscope.com/ProductCompliance</a>
ROHS	Compliant
UK-ROHS	Compliant



## \* Footnotes

Performance Note	Severe environmental conditions may degrade optimum performance
------------------	---