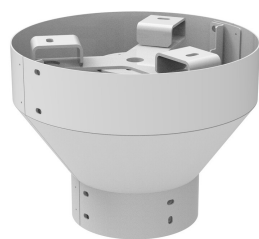


MTM100530 | STANDARD POLE ANTENNA MOUNT, "W" COMPATIBILITY



Antenna mount and transition supporting multiple antenna manufacturers that is compatible with 8" and 10" ANDREW poles

Supports 15-16" diameter antennas designated as "W" as per the compatibility matrix document

Product Classification

Product Type	Pole Accessory
Product Brand	Metro Cell
Ordering Note	ANDREW® standard product with terms
Warranty	One year

General Specifications

Antenna Compatibility, Other Vendors	AMPHENOL JMA KATHREIN KMW
Color	Light Gray (RAL 7035)
Color Options	Beige-Grey (RAL 7006) Black (RAL 9005) Black Green (RAL 6012) Brown (RAL 8014) Faux Concrete Green (RAL 6005) Metallic Silver Pure White

Material Specifications

Finish	Powder coated
Finish Concealment Covers	Powder coated
Material Type	Galvanized steel