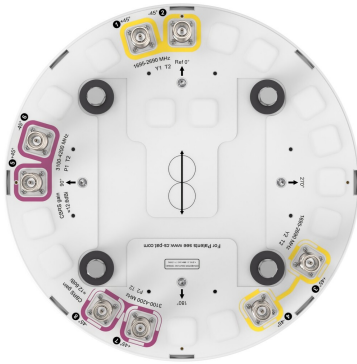


# VVSS-65PS-F2



8-port small cell antenna, 4x 1695–2690, 4x 3100–4200 MHz, bi-directional pattern, fixed tilt.

- Broadband Mid Band arrays (AWS/PCS/WCS/Band 41) with 4T4R (4X MIMO) capability
- Broadband performance – optimized for CBRS and C-bands
- 4 high gain ports for the 3GHz band

## General Specifications

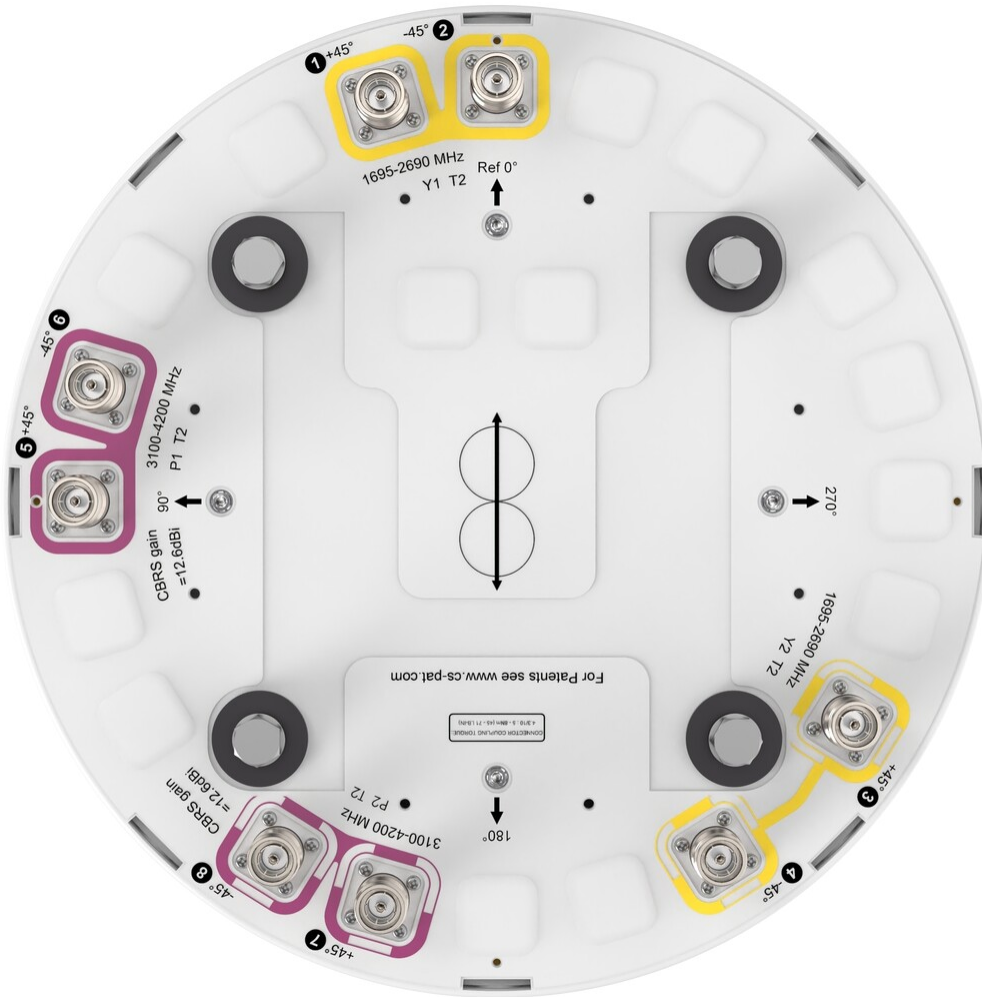
<b>Antenna Type</b>	Small Cell
<b>Band</b>	Multiband
<b>Color</b>	Light Gray (RAL 7035)
<b>Grounding Type</b>	RF connector inner conductor and body grounded to reflector and mounting bracket
<b>Performance Note</b>	Outdoor usage
<b>Radome Material</b>	ASA, UV stabilized
<b>Radiator Material</b>	Low loss circuit board
<b>Reflector Material</b>	Aluminum
<b>RF Connector Interface</b>	4.3-10 Female
<b>RF Connector Location</b>	Bottom
<b>RF Connector Quantity, high band</b>	8
<b>RF Connector Quantity, low band</b>	0
<b>RF Connector Quantity, total</b>	8

## Dimensions

<b>Width</b>	370 mm   14.567 in
<b>Depth</b>	370 mm   14.567 in
<b>Length</b>	610 mm   24.016 in
<b>Net Weight, antenna only</b>	12.8 kg   28.219 lb

## Port Configuration

# VVSS-65PS-F2



## Electrical Specifications

<b>Impedance</b>	50 ohm
<b>Operating Frequency Band</b>	1695 – 2690 MHz   3100 – 4200 MHz
<b>Polarization</b>	±45°
<b>Total Input Power, maximum</b>	600 W

## Electrical Specifications

	Y1-Y2	Y1-Y2	Y1-Y2	P1-P2	P1-P2	P1-P2
<b>Frequency Band, MHz</b>	1695–1920	1920–2200	2300–2690	3100–3550	3550–3700	3700–4200
<b>RF Port</b>	1-4	1-4	1-4	5-8	5-8	5-8
<b>Gain, dBi</b>	9.5	10.5	10.6	11.3	12	12
<b>Beamwidth, Horizontal,</b>	74.3	64.2	62.6	66.9	60.6	61.8

# VVSS-65PS-F2

## degrees

<b>Beamwidth, Vertical, degrees</b>	21.5	19.4	15	10.1	9.1	8.1
<b>Beam Tilt, degrees</b>	2	2	2	2	2	2
<b>Isolation, Cross Polarization, dB</b>	25	25	25	25	25	25
<b>Isolation, Inter-band, dB</b>	28	28	28	28	28	28
<b>VSWR   Return loss, dB</b>	1.5 14.0	1.5 14.0	1.5 14.0	1.5 14.0	1.5 14.0	1.5 14.0
<b>PIM, 3rd Order, 2 x 20 W, dBc</b>	-153	-153	-153	-145	-145	-145
<b>Input Power per Port, maximum, watts</b>	200	200	200	150	150	150
<b>Input Power per Port at 50°C, maximum, watts</b>	150	150	150	100	100	100

## Mechanical Specifications

<b>Wind Loading @ Velocity, frontal</b>	129.0 N @ 150 km/h (29.0 lbf @ 150 km/h)
<b>Wind Loading @ Velocity, lateral</b>	129.0 N @ 150 km/h (29.0 lbf @ 150 km/h)
<b>Wind Loading @ Velocity, maximum</b>	129.0 N @ 150 km/h (29.0 lbf @ 150 km/h)
<b>Wind Loading @ Velocity, rear</b>	129.0 N @ 150 km/h (29.0 lbf @ 150 km/h)
<b>Wind Speed, maximum</b>	241 km/h (150 mph)

## Packaging and Weights

<b>Width, packed</b>	478 mm   18.819 in
<b>Depth, packed</b>	464 mm   18.268 in
<b>Length, packed</b>	894 mm   35.197 in
<b>Weight, gross</b>	17.2 kg   37.919 lb

## Regulatory Compliance/Certifications

<b>Agency</b>	<b>Classification</b>
CHINA-ROHS	Below maximum concentration value
ISO 9001:2015	Designed, manufactured and/or distributed under this quality management system
REACH-SVHC	Compliant as per SVHC revision on <a href="http://www.commscope.com/ProductCompliance">www.commscope.com/ProductCompliance</a>
ROHS	Compliant
UK-ROHS	Compliant



# VVSS-65PS-F2

---

## \* Footnotes

### **Performance Note**

Severe environmental conditions may degrade optimum performance