

# RRV4-6585B-R6H4



12-port sector antenna, 4x 694–960MHz, 65° HPBW and 8x 1695–2690 MHz, 85° HPBW, 6x RET

- All Internal RET actuators are connected in “Cascaded SRET” configuration
- Antenna shape optimized for wind load reduction

## General Specifications

Antenna Type	Sector
Band	Multiband
Color	Light Gray (RAL 7035)
Grounding Type	RF connector inner conductor and body grounded to reflector and mounting bracket
Performance Note	Outdoor usage
Radome Material	Fiberglass, UV resistant
Reflector Material	Aluminum
RF Connector Interface	4.3-10 Female
RF Connector Location	Bottom
RF Connector Quantity, high band	8
RF Connector Quantity, mid band	0
RF Connector Quantity, low band	4
RF Connector Quantity, total	12

## Remote Electrical Tilt (RET) Information

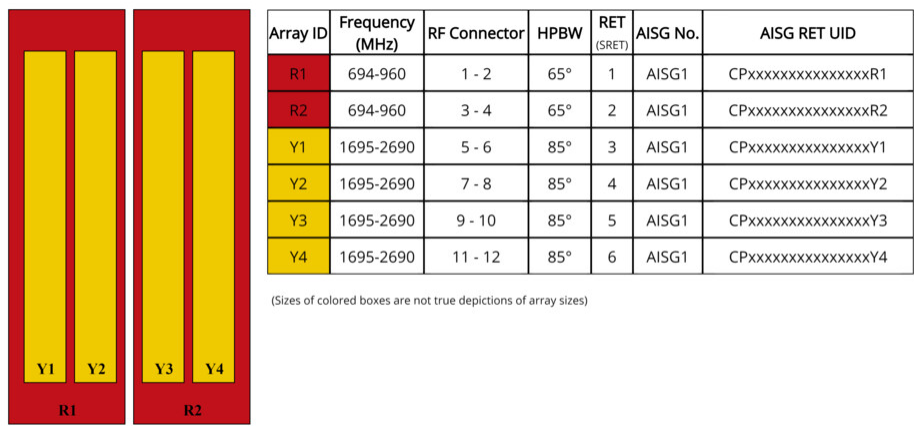
RET Hardware	CommRET v2
RET Interface	8-pin DIN Female   8-pin DIN Male
RET Interface, quantity	2 female   2 male
Input Voltage	10–30 Vdc
Internal RET	High band (4)   Low band (2)
Power Consumption, active state, maximum	8 W
Power Consumption, idle state, maximum	1 W
Protocol	3GPP/AISG 2.0

## Dimensions

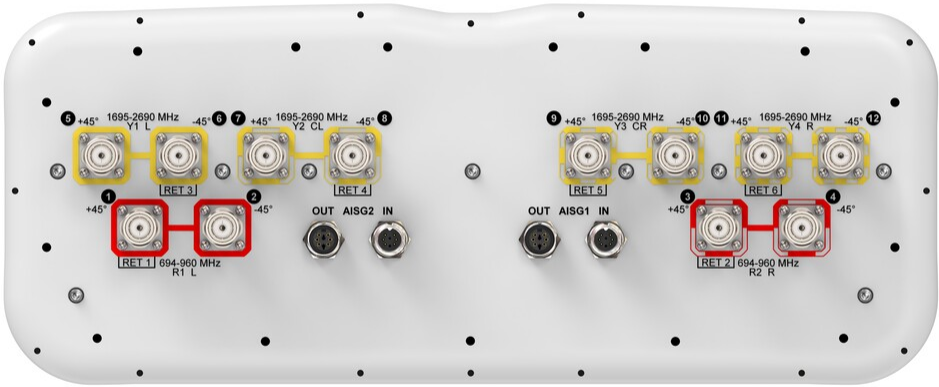
# RRV4-6585B-R6H4

Width	498 mm   19.606 in
Depth	197 mm   7.756 in
Length	2180 mm   85.827 in
Net Weight, antenna only	42 kg   92.594 lb

## Array Layout



## Port Configuration



# RRV4-6585B-R6H4

## Electrical Specifications

Impedance	50 ohm
Operating Frequency Band	1695 – 2690 MHz   694 – 960 MHz
Polarization	±45°
Total Input Power, maximum	900 W @ 50 °C

## Electrical Specifications

Frequency Band, MHz	694–790	790–862	870–960	1710–1880	1920–2170	2490–2690
Gain, dBi	15.4	15.5	16	17.2	18.2	19
Beamwidth, Horizontal, degrees	71	64	63	83	77	66
Beamwidth, Vertical, degrees	10.3	9.3	8.6	5.8	5.2	4.2
Beam Tilt, degrees	2–14	2–14	2–14	2–12	2–12	2–12
USLS (First Lobe), dB	17	17	20	17	15	18
Front-to-Back Ratio at 180°, dB	32	31	30	34	28	32
Isolation, Cross Polarization, dB	28	28	28	25	25	25
Isolation, Inter-band, dB	28	28	28	27	27	27
VSWR   Return loss, dB	1.5   14.0	1.5   14.0	1.5   14.0	1.5   14.0	1.5   14.0	1.5   14.0
PIM, 3rd Order, 2 x 20 W, dBc	-153	-153	-153	-153	-153	-153
Input Power per Port at 50°C, maximum, watts	250	250	250	200	200	150

## Mechanical Specifications

Wind Loading @ Velocity, frontal	760.0 N @ 150 km/h (170.9 lbf @ 150 km/h)
Wind Loading @ Velocity, lateral	233.0 N @ 150 km/h (52.4 lbf @ 150 km/h)
Wind Loading @ Velocity, maximum	911.0 N @ 150 km/h (204.8 lbf @ 150 km/h)
Wind Loading @ Velocity, rear	523.0 N @ 150 km/h (117.6 lbf @ 150 km/h)
Wind Speed, maximum	241 km/h (150 mph)

## Packaging and Weights

Width, packed	565 mm   22.244 in
Depth, packed	309 mm   12.165 in
Length, packed	2367 mm   93.189 in

# RRV4-6585B-R6H4

**Weight, gross** 56.5 kg | 124.561 lb

## Regulatory Compliance/Certifications

Agency	Classification
CHINA-ROHS	Below maximum concentration value
ISO 9001:2015	Designed, manufactured and/or distributed under this quality management system
REACH-SVHC	Compliant as per SVHC revision on <a href="http://www.commscope.com/ProductCompliance">www.commscope.com/ProductCompliance</a>
ROHS	Compliant
UK-ROHS	Compliant



## Included Products

BSAMNT-4	–	Wide Profile Antenna Downtilt Mounting Kit for 2.4 - 4.5 in (60 - 115 mm) OD round members. Kit contains one scissor top bracket set and one bottom bracket set.
----------	---	--

## \* Footnotes

<b>Performance Note</b>	Severe environmental conditions may degrade optimum performance
-------------------------	---

# BSAMNT-4



Wide Profile Antenna Downtilt Mounting Kit for 2.4 - 4.5 in (60 - 115 mm) OD round members. Kit contains one scissor top bracket set and one bottom bracket set.

## Product Classification

**Product Type** Downtilt mounting kit

## General Specifications

**Application** Outdoor

**Color** Silver

## Dimensions

**Compatible Diameter, maximum** 115 mm | 4.528 in

**Compatible Diameter, minimum** 60 mm | 2.362 in

**Weight, net** 6.5 kg | 14.33 lb

## Material Specifications

**Material Type** Galvanized steel

## Packaging and Weights

**Included** Brackets | Hardware

**Packaging quantity** 1

## Regulatory Compliance/Certifications

Agency	Classification
CHINA-ROHS	Below maximum concentration value
ISO 9001:2015	Designed, manufactured and/or distributed under this quality management system
REACH-SVHC	Compliant as per SVHC revision on <a href="http://www.andrew.com/ProductCompliance">www.andrew.com/ProductCompliance</a>
ROHS	Compliant
UK-ROHS	Compliant

