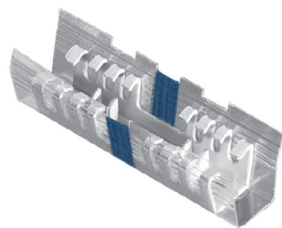


9-552041-4 | INLINE MINI, BLUE, LP



Inline connector, 1000 loose piece, mini, blue

- Lightweight, compact, and economical means of splicing multiconductor telephone cable
- No prestripping or cutting required, can tap without service interruptions, eliminates “turndowns”
- Color-coded to indicate size and type of wire; used for high count straight splicing applications

Product Classification

Regional Availability	Australia/New Zealand China EMEA Latin America North America
Product Type	Splice

General Specifications

Connector Color Code	Blue
Connector Sealant	Unfilled
Connector Splicing Type	High Count Straight

Dimensions

Compatible Conductor Gauge, solid	26–22 AWG
--	-----------

Electrical Specifications

Safety Voltage Rating	400 Vdc
------------------------------	---------

Material Specifications

Contact Base Material	Phosphor Bronze
Contact Plating Material	Tin
Insulation Material	Air Core PIC Paper or Pulp

Environmental Specifications

Operating Temperature	-40 °C to +60 °C (-40 °F to +140 °F)
Environmental Space	Outdoor

Packaging and Weights

Packaging quantity	1000
---------------------------	------

Packaging Type

Loose piece

Regulatory Compliance/Certifications

Agency

CHINA-ROHS

REACH-SVHC

ROHS

Classification

Below maximum concentration value

Compliant as per SVHC revision on www.commscope.com/ProductCompliance

Compliant

