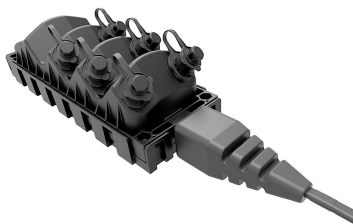


# MHT-06H2H0U-A0150F



MHT Fiber Optic Multiport Service Terminal, 6-port, HMFOC, dielect. flat loose tube cable, HMFOC on stub end, 150 ft

- Hardened connectors are factory-terminated and environmentally sealed for use in optical drop cable deployments
- Plug and play adapter ports ensure rapid cable installment in the outside plant access section of the network
- Multiport Service Terminals incorporate hardened connector technology that is designed to withstand the rugged outside plant environment

**Alternative products available:**

HMT-B6M2A0150FN000 NOVUX™ Hardened Mulfi-fiber Terminal, 6 HMFOC ports, 2 fibers per port, Dielectric flat loose tube cable with HMFOC plug (female/no pin), 150 ft/45 m

## Product Classification

Regional Availability	Latin America   North America
Product Type	Access terminal, without splitter/tap
Product Series	MHT

## General Specifications

Cable Type	Dielectric - Flat - Loose Tube
Cable, quantity	1
Distribution Type	6 ports
Enclosure Color	Black
Mounting	Handhole   Pedestal   Pole   Strand
Port Type	Hardened multi-fiber (HMFOC) jack, male/pinned
Port, quantity	6
Splitter, quantity	0
Stub Type	Hardened multi-fiber (HMFOC) jack, pinned

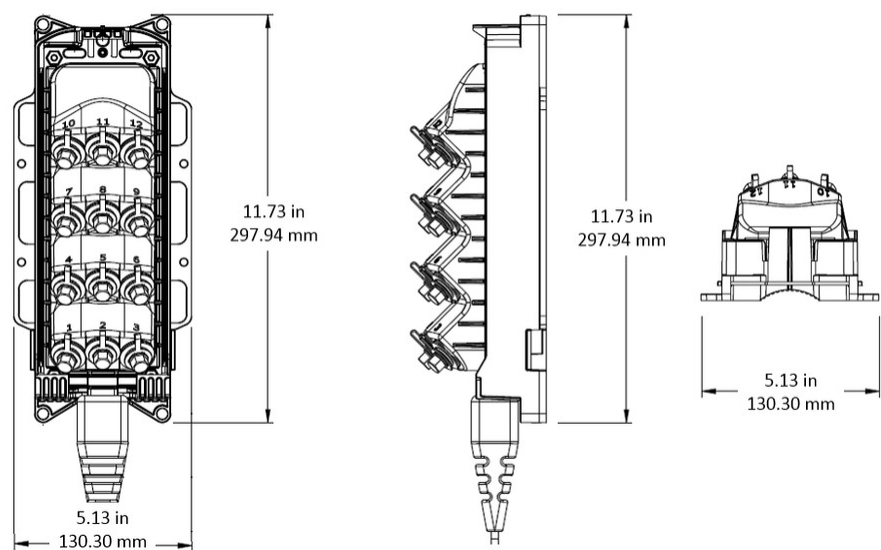
## Dimensions

Height	298 mm   11.732 in
Width	130.3 mm   5.13 in
Depth	89 mm   3.504 in

# MHT-06H2H0U-A0150F

Cable Length, stub	150 ft (45 m)
Cable Outer Diameter	4.5 x 8.1 mm (0.18 x 0.32 in)

## Dimension Drawing



## Ordering Tree

MHT – [ ] – [ ] – [ ] – [ ] – [ ] – [ ] – F

Terminal model

02	2 ports
04	4 ports
06	6 ports
12	12 ports

Connector type

H	HMFOC
---	-------

Number of fibers per port

2	Two fibers
N	Twelve fibers

Tail end

00	Stub end
----	----------

Standard cable stub length

0050	50 feet	500	500 feet
0200	200 feet	750	750 feet
0250	250 feet	1000	1,000 feet

Cable type

A	Dielectric flat
---	-----------------

Mounting style

U	Universal: Terminal is on top of the spool; stub deploys first
---	--

\*0–99 foot lengths of cable is automatically coiled and packaged 2 per box; lengths greater than 99 feet are spooled

## Material Specifications

Enclosure Material Type	Gasketed hardened plastic
-------------------------	---------------------------

## Optical Specifications

# MHT-06H2H0U-A0150F

Fiber Type	G.657.A1/A2
Operating Wavelength Range	1260 – 1635 nm
Attenuation Cable Coefficient, maximum	0.30 dB/km @ 1550 nm   0.40 dB/km @ 1310 nm
Attenuation Terminal Connectors, maximum	0.45 dB
Directivity, minimum	60 dB
Insertion Loss, Terminal Connector, typical	0.16 dB
Return Loss, Connector, minimum	65 dB

## Environmental Specifications

Operating Temperature	-40 °C to +70 °C (-40 °F to +158 °F)
Relative Humidity	5%–100%, condensing
Environmental Space	Above ground   Below ground   Buried
Flammability Rating	UL 94 V-0
Qualification Standards	IEC 60529, IP68 + 2 m waterhead   Telcordia GR-3120-CORE   Telcordia GR-326-CORE   Telcordia GR-771-CORE
UV Resistance	UV stabilized

## Packaging and Weights

Included	Enclosure (1)   Universal mounting bracket (1)
Packaging quantity	1
Packaging Type	Box   Carton
Weight, without cable	0.99 kg   2.183 lb

## Regulatory Compliance/Certifications

Agency	Classification
CHINA-ROHS	Above maximum concentration value
ISO 9001:2015	Designed, manufactured and/or distributed under this quality management system
ROHS	Compliant/Exempted
UK-ROHS	Compliant/Exempted



## Included Products

MST-UMB-MINI	–	DLX® Mini-MST, Fiber Optic Universal Mounting Bracket
--------------	---	---



# MST-UMB-MINI



DLX® Mini-MST, Fiber Optic Universal Mounting Bracket

## Product Classification

Regional Availability	EMEA   Latin America   North America
Product Type	Mounting bracket
Product Brand	DLX®
Product Series	Mini-MST

## General Specifications

Color	Black
-------	-------

## Environmental Specifications

Environmental Space	Outdoor
---------------------	---------

## Packaging and Weights

Packaging quantity	1
Packaging Type	Bag   Carton

## Regulatory Compliance/Certifications

Agency	Classification
CHINA-ROHS	Below maximum concentration value
REACH-SVHC	Compliant as per SVHC revision on <a href="https://www.commscope.com/ProductCompliance">www.commscope.com/ProductCompliance</a>
ROHS	Compliant
UK-ROHS	Compliant

