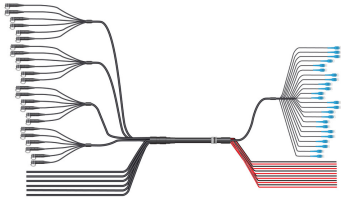


FDH1204-48SE2



HELIAX® Direct-connect 6 x 24 hybrid trunk assembly: 6 pairs of 4AWG DC conductors x 24 pairs of single mode fibers.

- RRU (top) breakout; 6 blunt-cut power cords (6-6AWG pairs), 48 single mode fibers in outdoor-rated tails with ODC-compatible interface
- BBU (bottom) breakout; 12-4AWG power conductors blunt cut, 48 single mode fibers within 24 DLC tails

Product Classification

Regional Availability	Asia Australia/New Zealand EMEA Latin America North America
Product Type	Hybrid cable assembly
Product Brand	HELIAX®
Product Series	FDH

General Specifications

Conductors, quantity	12
Construction Type	Direct breakout trunk
Interface, Connector A	ODC-LC
Interface Feature, connector A	Outdoor
Interface Body Style, connector A	Straight
Interface, Connector B	DLC
Interface Feature, connector B	Standard
Interface Body Style, connector B	Straight
Jacket Color	Black
Total Fibers, quantity	48

Dimensions

Cable Assembly Length Range (m)	10 – 130
Diameter Over Jacket	44.78 mm 1.763 in
Center Conductor Gauge	4 AWG

Mechanical Specifications

Minimum Bend Radius	523.2 mm 20.598 in
Minimum Bend Radius, furcation	30 mm 1.181 in

FDH1204-48SE2

Optical Specifications

Fiber Mode	Singlemode
Fiber Type	G.657.A2/B2
Insertion Loss, typical note	Insertion loss is measured at 1310 and 1550 nm
Insertion Loss, typical	0.75

Environmental Specifications

Operating Temperature	-40 °C to +75 °C (-40 °F to +167 °F)
------------------------------	--------------------------------------

Packaging and Weights

Cable weight	3.4 kg/m 2.285 lb/ft
---------------------	------------------------

* Footnotes

Insertion Loss, typical note	Insertion loss is measured at a room temp of +20°C (+68°F)
-------------------------------------	--