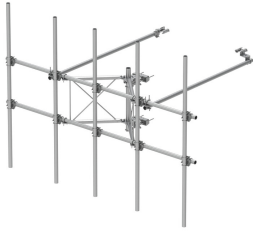


SFG23HDX-14-5-126



G23HDX High Capacity Sector Frame, 14.5 ft x 2.88 in OD face pipes, includes five 2.88 OD x 126 in antenna pipes

Product Classification

Product Type	High capacity Tower sector frame
Product Series	G2
Ordering Note	NSTD445 Compliant

General Specifications

Application	4G LTE antenna/radio mount
Mounting	Angle 60°, 203.2 mm (8 in) Straight or tapered legs up to 203.2 mm (8 in) OD
Patent Number	Patent pending
Pipe, quantity	5
Sectors, quantity	1
Tower Taper	Non-tapered Tapered

Dimensions

Height	3,200.4 mm 126 in
Face Width	4.42 m 14.5 ft
Width	4,419.6 mm 174 in
Pipe Length	3,200.4 mm 126 in
Face Support Pipe Diameter	73.025 mm 2.875 in
Mounting Diameter, maximum	218.44 mm 8.6 in
Mounting Diameter, minimum	38.1 mm 1.5 in
Pipe Outer Diameter	73.025 mm 2.875 in
Stand-off Distance	1,066.8 mm 42 in

Material Specifications

Material Type	Hot dip galvanized steel
----------------------	--------------------------

Mechanical Specifications

SFG23HDX-14-5-126

Wind Rating For Specifications, please contact your local ANDREW representative

Wind Rating Test Method TIA/EIA-222-G

Packaging and Weights

Included Frame | Pipe mounts | Plain end pipes | Stiff arms (2) | Tower attachment

Packaging quantity 1

Regulatory Compliance/Certifications

Agency	Classification
CHINA-ROHS	Below maximum concentration value
REACH-SVHC	Compliant as per SVHC revision on www.andrew.com/ProductCompliance
ROHS	Compliant
UK-ROHS	Compliant



* Footnotes

Wind Rating BWS—Base Wind Speed; FBC—Florida Building Code