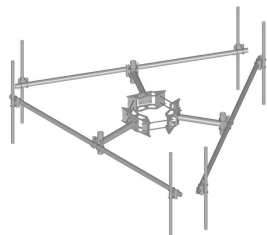


MC-K14M-6-72



Monopole Co-location T-Frame kit, 12 in to 50 in OD, 14 ft 6 in face, includes pipe

Product Classification

Product Type Monopole T-frame kit

General Specifications

Mounting Monopole, 304.8–1270 mm (12–50 in) OD
Pipe, quantity 6
Sectors, quantity 3

Dimensions

Height 1,828.8 mm | 72 in
Face Width 4.42 m | 14.5 ft
Width 4,419.6 mm | 174 in
Length 914.4 mm | 36 in
Pipe Length 1,828.8 mm | 72 in
Mounting Diameter, maximum 1270 mm | 50 in
Mounting Diameter, minimum 304.8 mm | 12 in
Pipe Outer Diameter 60.96 mm | 2.4 in
Stand-off Distance 914.4 mm | 36 in
Mounting Circumference, maximum 3,990.34 mm | 157.1 in
Mounting Circumference, minimum 1,196.34 mm | 47.1 in

Material Specifications

Material Type Hot dip galvanized steel

Mechanical Specifications

Wind Rating 120 mph (BWS) at 150 ft AGL | 140 mph (3-second gust) at 150 ft AGL using Exposure D per FBC
Wind Rating Criteria Four 72 in x 8 in panel antennas per sector

MC-K14M-6-72

Wind Rating Test Method	TIA/EIA-222-G
-------------------------	---------------

Packaging and Weights

Included	Cellular pipe frames Pipe mounts Ring mount Stand-off arms
Packaging quantity	1
Weight, net	498.997 kg 1,100.1 lb

Regulatory Compliance/Certifications

Agency	Classification
ISO 9001:2015	Designed, manufactured and/or distributed under this quality management system

* Footnotes

Wind Rating	BWS—Base Wind Speed; FBC—Florida Building Code
-------------	--