

7851671-1003 | CAP M2 35LT/35HT F-AC



Carrier Access Point with MIMO 2x2 Radio Modules for Medium Power TDD3500 Applications, Fiber Fed, AC

Product Classification

Product Type	Access point
Product Brand	ERA®
Product Series	CAP M2

General Specifications

Fan Kit	Not included
Fed Type	Fiber fed
Note	OFCOM and CEPT case B compliance with a maximum passive distribution gain of up to 15 dBi – please contact your ANDREW representative
Power Class	Medium
Powering Type	Internal AC powered

Electrical Specifications

License Band	TDD 3500
Voltage Range	100 to 240 Vac

Regulatory Compliance/Certifications

Agency	Classification
CHINA-ROHS	Above maximum concentration value
ROHS	Compliant/Exempted
UK-ROHS	Compliant/Exempted



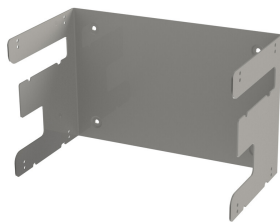
Included Products

7851781-00 Wall Mounting Bracket CAP M2	– Wall mounting bracket to mount a CAP M2 to a wall
--	--

7851781-00

|

Wall Mounting Bracket CAP M2



Wall mounting bracket to mount a CAP M2 to a wall

Product Classification

Product Type	Mounting kit
Product Brand	ERA®

Dimensions

Height	351 mm		13.819 in
Width	220 mm		8.661 in
Depth	189 mm		7.441 in

Packaging and Weights

Height, packed	240 mm		9.449 in
Width, packed	310 mm		12.205 in
Depth, packed	380 mm		14.961 in
Weight, gross	2.9 kg		6.393 lb

Regulatory Compliance/Certifications

Agency	Classification
CHINA-ROHS	Below maximum concentration value
REACH-SVHC	Compliant as per SVHC revision on www.andrew.com/ProductCompliance
ROHS	Compliant
UK-ROHS	Compliant

