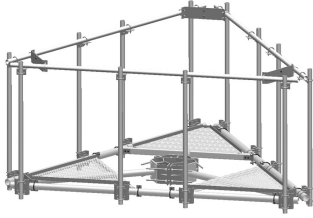


# MT-195-14

---



Upper Support Rail Kit for co-location platforms, 14 ft face

## Product Classification

**Product Type** Support rail kit

## General Specifications

**Mounting** Pipe, 60.3 mm (2-3/8 in.) OD

**Sectors, quantity** 3

## Dimensions

**Height** 185.42 mm | 7.3 in

**Face Width** 4.42 m | 14.5 ft

**Width** 4,419.6 mm | 174 in

**Pipe Outer Diameter** 60.96 mm | 2.4 in

## Material Specifications

**Material Type** Hot dip galvanized steel

## Packaging and Weights

**Included** Crossover angles (12) | Hardware | Rail

**Packaging quantity** 1

**Weight, net** 115.984 kg | 255.7 lb

## Regulatory Compliance/Certifications

**Agency** **Classification**

ISO 9001:2015 Designed, manufactured and/or distributed under this quality management system

## Included Products

- XA-1919 – Crossover Angle, 1.9 in to 1.9 in OD
- XA-1920 – Crossover Angle, 1.9 in to 2.38 in OD

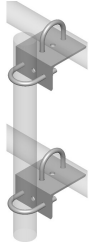
# MT-195-14

---

- XA-2020 – Crossover Angle, 2-3/8 in to 2-3/8 in OD
- XA-2030 – Crossover Angle, 2.38 in to 2.88 in OD
- XA-2035 – Crossover Angle, 2.38 in to 3.5 in OD
- XA-3030 – Crossover Angle, 2.88 in to 2.88 in OD

# XA-1919

---



Crossover Angle, 1.9 in to 1.9 in OD

## Product Classification

**Product Type** Mounting kit

## General Specifications

**Tower Taper** Non-tapered

## Dimensions

**Height** 152.4 mm | 6 in

**Width** 152.4 mm | 6 in

**Length** 152.4 mm | 6 in

**Mounting Diameter, maximum** 48.26 mm | 1.9 in

**Mounting Diameter, minimum** 48.26 mm | 1.9 in

## Material Specifications

**Material Type** Hot dip galvanized steel

## Packaging and Weights

**Included** Angle | U-bolts

**Packaging quantity** 2

**Weight, net** 1.8 kg | 3.968 lb

## Regulatory Compliance/Certifications

### Agency

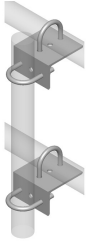
ISO 9001:2015

### Classification

Designed, manufactured and/or distributed under this quality management system

# XA-1920

---



Crossover Angle, 1.9 in to 2.38 in OD

## Product Classification

**Product Type** Mounting kit

## General Specifications

**Tower Taper** Non-tapered

## Dimensions

**Height** 152.4 mm | 6 in

**Width** 152.4 mm | 6 in

**Length** 152.4 mm | 6 in

**Mounting Diameter, maximum** 60.96 mm | 2.4 in

**Mounting Diameter, minimum** 48.26 mm | 1.9 in

## Material Specifications

**Material Type** Hot dip galvanized steel

## Packaging and Weights

**Included** Angle | U-bolts

**Packaging quantity** 2

**Weight, net** 1.8 kg | 3.968 lb

## Regulatory Compliance/Certifications

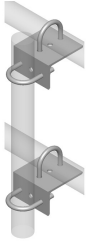
### Agency

ISO 9001:2015

### Classification

Designed, manufactured and/or distributed under this quality management system

# XA-2020



Crossover Angle, 2-3/8 in to 2-3/8 in OD

## Product Classification

**Product Type** Mounting kit

## General Specifications

**Mounting** Pipe, 60.3 mm (2-3/8 in ) OD

**Tower Taper** Non-tapered

## Dimensions

**Height** 152.4 mm | 6 in

**Width** 152.4 mm | 6 in

**Length** 152.4 mm | 6 in

**Mounting Diameter, maximum** 60.96 mm | 2.4 in

**Mounting Diameter, minimum** 60.96 mm | 2.4 in

## Material Specifications

**Material Type** Hot dip galvanized steel

## Packaging and Weights

**Included** Angle | U-bolts

**Packaging quantity** 2

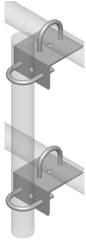
**Weight, net** 1.8 kg | 3.968 lb

## Regulatory Compliance/Certifications

Agency	Classification
CHINA-ROHS	Below maximum concentration value
ISO 9001:2015	Designed, manufactured and/or distributed under this quality management system
ROHS	Compliant
UK-ROHS	Compliant



# XA-2030



Crossover Angle, 2.38 in to 2.88 in OD

## Product Classification

**Product Type** Mounting kit

## General Specifications

**Tower Taper** Non-tapered

## Dimensions

**Height** 152.4 mm | 6 in

**Width** 152.4 mm | 6 in

**Length** 152.4 mm | 6 in

**Mounting Diameter, maximum** 73.66 mm | 2.9 in

**Mounting Diameter, minimum** 60.96 mm | 2.4 in

## Material Specifications

**Material Type** Hot dip galvanized steel

## Packaging and Weights

**Included** Angle | U-bolts

**Packaging quantity** 2

**Weight, net** 1.8 kg | 3.968 lb

## Regulatory Compliance/Certifications

Agency	Classification
CHINA-ROHS	Above maximum concentration value
ISO 9001:2015	Designed, manufactured and/or distributed under this quality management system
ROHS	Compliant/Exempted
UK-ROHS	Compliant/Exempted

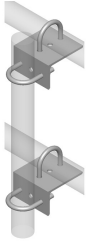






# XA-2035

---



Crossover Angle, 2.38 in to 3.5 in OD

## Product Classification

**Product Type** Mounting kit

## General Specifications

**Tower Taper** Non-tapered

## Dimensions

**Height** 152.4 mm | 6 in

**Width** 152.4 mm | 6 in

**Length** 152.4 mm | 6 in

**Mounting Diameter, maximum** 88.9 mm | 3.5 in

**Mounting Diameter, minimum** 60.96 mm | 2.4 in

## Material Specifications

**Material Type** Hot dip galvanized steel

## Packaging and Weights

**Included** Angle | U-bolts

**Packaging quantity** 2

**Weight, net** 1.8 kg | 3.968 lb

## Regulatory Compliance/Certifications

### Agency

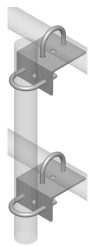
ISO 9001:2015

### Classification

Designed, manufactured and/or distributed under this quality management system

# XA-3030

---



Crossover Angle, 2.88 in to 2.88 in OD

## Product Classification

**Product Type** Mounting kit

## General Specifications

**Tower Taper** Non-tapered

## Dimensions

**Height** 152.4 mm | 6 in

**Width** 152.4 mm | 6 in

**Length** 152.4 mm | 6 in

**Mounting Diameter, maximum** 73.66 mm | 2.9 in

**Mounting Diameter, minimum** 73.66 mm | 2.9 in

## Material Specifications

**Material Type** Hot dip galvanized steel

## Packaging and Weights

**Included** Angle | U-bolts

**Packaging quantity** 2

**Weight, net** 1.8 kg | 3.968 lb

## Regulatory Compliance/Certifications

### Agency

ISO 9001:2015

### Classification

Designed, manufactured and/or distributed under this quality management system