

6V-10M-F6



12-port multibeam antenna, 12x 1695–2690 MHz, 6x 10-14° HPBW, fixed electrical tilt

- Provides 6 beams covering 1.695-2.69 GHz in 16 deg sectors
- Covers the entire mid-band, including bands 1,3,7,25,66,30,38,40,41
- Increases capacity density for maximum throughput
- Novel design produces stable beam peak positions at mid band
- Each beam supports 2x2 MIMO for high capacity at venues or special events

General Specifications

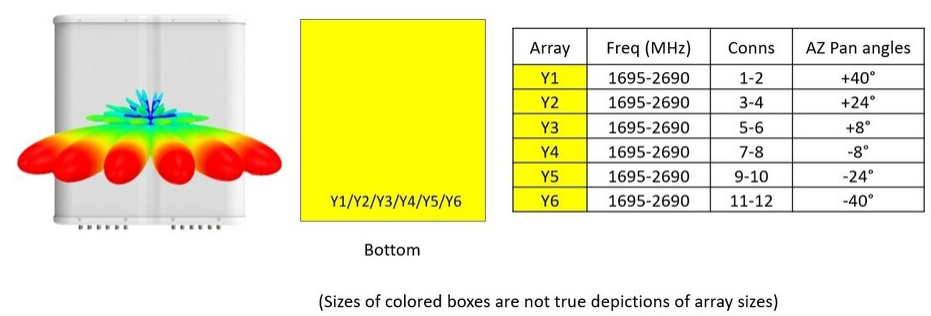
Antenna Type	Multibeam
Band	Single band
Color	Light Gray (RAL 7035)
Grounding Type	RF connector inner conductor and body grounded to reflector and mounting bracket
Performance Note	Outdoor usage
Radome Material	Fiberglass, UV resistant
Radiator Material	Low loss circuit board
Reflector Material	Aluminum
RF Connector Interface	4.3-10 Female
RF Connector Location	Bottom
RF Connector Quantity, high band	0
RF Connector Quantity, mid band	12
RF Connector Quantity, low band	0
RF Connector Quantity, total	12

Dimensions

Width	970 mm 38.189 in
Depth	235 mm 9.252 in
Length	700 mm 27.559 in
Net Weight, antenna only	30 kg 66.139 lb

Array Layout

6V-10M-F6



Port Configuration



Electrical Specifications

Impedance	50 ohm
Operating Frequency Band	1695 – 2690 MHz
Polarization	±45°
Total Input Power, maximum	1,000 W

Electrical Specifications

	Y1-Y6	Y1-Y6	Y1-Y6	Y1-Y6	Y1-Y6
Frequency Band, MHz	1695–1880	1850–1990	1920–2180	2300–2500	2500–2690
RF Port	P1-P12	P1-P12	P1-P12	P1-P12	P1-P12

6V-10M-F6

Gain, dBi	20.7	21.2	21.4	22.2	22.1
Beam Centers, Horizontal, degrees	±8 ±24 ±40	±8 ±24 ±40	±8 ±24 ±40	±8 ±24 ±40	±8 ±24 ±40
Beam Crossover, dB	7	8	9	10	13
Beamwidth, Horizontal, degrees	12	11	11	10	9
Beamwidth, Vertical, degrees	15.4	14.2	13.6	11.6	10.7
Beam Tilt, degrees	6	6	6	6	6
USLS (First Lobe), dB	15	15	15	15	15
Isolation, Cross Polarization, dB	25	25	25	25	25
Isolation, Beam to Beam, dB	19	19	19	19	18
VSWR Return loss, dB	1.5 14.0	1.5 14.0	1.5 14.0	1.5 14.0	1.5 14.0
PIM, 3rd Order, 2 x 20 W, dBc	-153	-153	-153	-153	-153
Input Power per Port, maximum, watts	200	200	200	200	200

Mechanical Specifications

Wind Loading @ Velocity, frontal	868.0 N @ 150 km/h (195.1 lbf @ 150 km/h)
Wind Loading @ Velocity, lateral	265.0 N @ 150 km/h (59.6 lbf @ 150 km/h)
Wind Loading @ Velocity, rear	868.0 N @ 150 km/h (195.1 lbf @ 150 km/h)
Wind Speed, maximum	241 km/h (150 mph)

Packaging and Weights

Width, packed	1084 mm 42.677 in
Depth, packed	365 mm 14.37 in
Length, packed	816 mm 32.126 in
Weight, gross	43 kg 94.799 lb

Regulatory Compliance/Certifications

Agency	Classification
CHINA-ROHS	Above maximum concentration value
ISO 9001:2015	Designed, manufactured and/or distributed under this quality management system
ROHS	Compliant/Exempted
UK-ROHS	Compliant/Exempted

6V-10M-F6



Included Products

- BSAMNT-4 – Wide Profile Antenna Downtilt Mounting Kit for 2.4 - 4.5 in (60 - 115 mm) OD round members. Kit contains one scissor top bracket set and one bottom bracket set.

* Footnotes

Performance Note Severe environmental conditions may degrade optimum performance

BSAMNT-4



Wide Profile Antenna Downtilt Mounting Kit for 2.4 - 4.5 in (60 - 115 mm) OD round members. Kit contains one scissor top bracket set and one bottom bracket set.

Product Classification

Product Type Downtilt mounting kit

General Specifications

Application Outdoor

Color Silver

Dimensions

Compatible Diameter, maximum 115 mm | 4.528 in

Compatible Diameter, minimum 60 mm | 2.362 in

Weight, net 6.5 kg | 14.33 lb

Material Specifications

Material Type Galvanized steel

Packaging and Weights

Included Brackets | Hardware

Packaging quantity 1

Regulatory Compliance/Certifications

Agency	Classification
CHINA-ROHS	Below maximum concentration value
ISO 9001:2015	Designed, manufactured and/or distributed under this quality management system
REACH-SVHC	Compliant as per SVHC revision on www.andrew.com/ProductCompliance
ROHS	Compliant
UK-ROHS	Compliant

