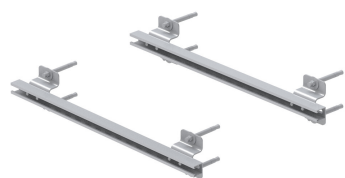


MTC3339W



Remote Radio Seismic Wall Mount Unit 3' Wide

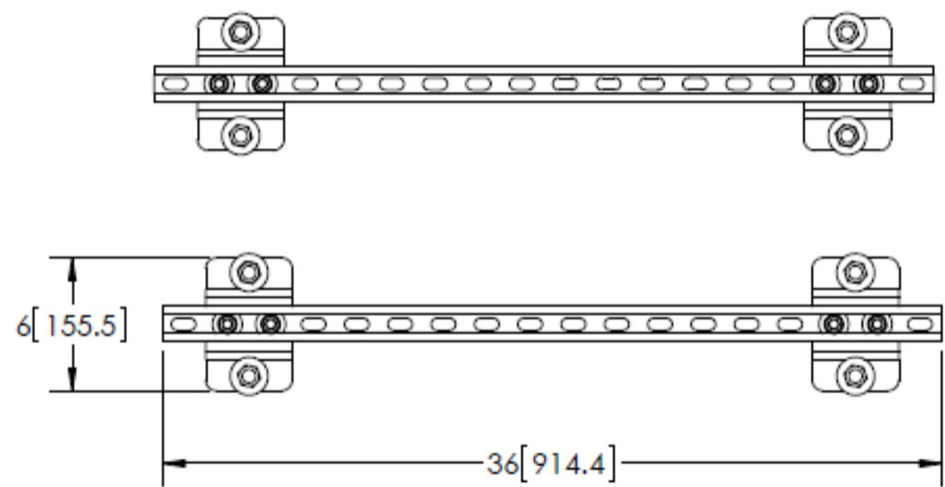
Product Classification

Product Type Remote radio head unit mount

Dimensions

Height 152.4 mm | 6 in
Width 914.4 mm | 36 in
Length 101.6 mm | 4 in

Outline Drawing



Material Specifications

Material Type Hot dip galvanized steel

MTC3339W

Packaging and Weights

Included	Wall brackets (2) Wall mount hardware
Packaging quantity	2
Weight, net	11.4 kg 25.133 lb