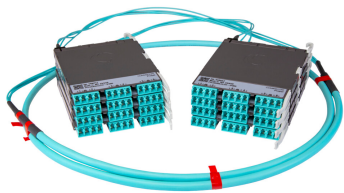


PPLU3G8LCLCN



Propel ULL Singlemode Cabled Module, 24x8 duplex LC Propel module on End A to 24x8 on End B, 192 fiber B2ca Trunk, Method B Enhanced

- This component requires 48 lanes on the Propel Panel blade
- Ultra-low loss (ULL) with Method B Enhanced polarity
- End A module can be installed from rear of panel
- Serialized QR code provides easy access to factory optical test results

Product Classification

Regional Availability	Asia Australia/New Zealand EMEA Latin America North America
Portfolio	SYSTIMAX®
Product Type	Fiber cabled module
Product Brand	Propel
Product Series	PPL
Ordering Note	End B module is the same module as End A For lengths greater than 999 ft (304 m), orders must be in meters Maximum length is 400 meters

General Specifications

Configuration Type	PROPEL Module to PROPEL Module
Cable Color	Yellow
Cable Type	Trunk Cable - LSZH Class B2ca
Interface, front	LC/UPC
Interface Feature, front	Duplex Shuttered
Interface Color, front	Blue
Interface, rear	LC/UPC
Interface Feature, rear	Duplex Shuttered
Interface Color, rear	Blue
Module Size, end A	8 fiber
Module Size, end B	8 fiber
Module Quantity, end A	24
Module Quantity, end B	24
Polarity	Method B Enhanced (ULL)
Total Fibers, quantity	192

PPLU3G8LCLCN

Total Ports, quantity, front	96
Total Ports, quantity, rear	96
Dimensions	
Height	11 mm 0.433 in
Width	65 mm 2.559 in
Depth	170 mm 6.693 in
Breakout Length, end B	23 in
Cable Assembly Length Range (m)	1 – 400
Cable Assembly Length Range (ft)	2 – 999

Ordering Tree



Optical Specifications

Fiber Mode	Singlemode
Fiber Type	OS2
Insertion Loss, maximum	0.6 dB

Environmental Specifications

Qualification Standards	IEC 61753-1 TIA-568.3-D
Safety Standard	c-UL-us

Packaging and Weights

Packaging quantity	1
--------------------	---

Regulatory Compliance/Certifications

Agency	Classification
--------	----------------

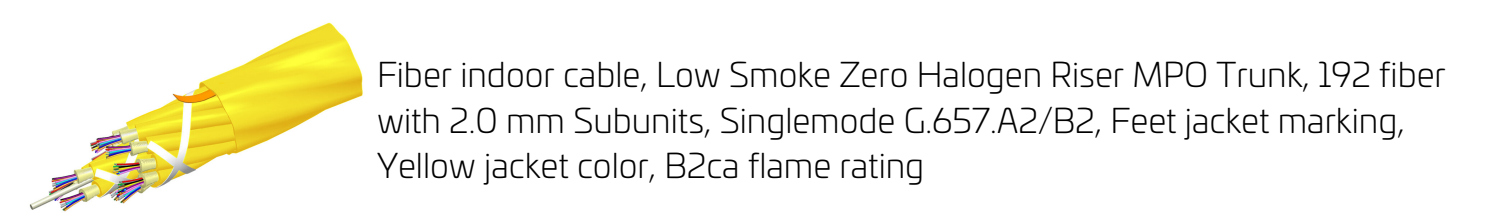
PPLU3G8LCLCN

CHINA-ROHS	Above maximum concentration value
ROHS	Compliant/Exempted
UK-ROHS	Compliant/Exempted



Included Products

760253754	–	Fiber indoor cable, Low Smoke Zero Halogen Riser MPO Trunk, 192 fiber with 2.0 mm Subunits,
N-192-MP-8G1-F08YL/20T/B2		Singlemode G.657.A2/B2, Feet jacket marking, Yellow jacket color, B2ca flame rating



Product Classification

Regional Availability	Asia Australia/New Zealand EMEA
Portfolio	CommScope®
Product Type	Fiber indoor cable
Product Series	N-MP

General Specifications

Cable Type	MPO trunk cable
Construction Type	Non-armored
Subunit Type	Gel-free
Jacket Color	Yellow
Jacket Marking	Feet
Subunit, quantity	24
Fibers per Subunit, quantity	8
Total Fiber Count	192

Dimensions

Buffer Tube/Subunit Diameter	2 mm 0.079 in
Diameter Over Jacket	14.7 mm 0.579 in

Mechanical Specifications

Minimum Bend Radius, loaded	221 mm 8.701 in
Minimum Bend Radius, unloaded	147 mm 5.787 in
Tensile Load, long term, maximum	200 N 44.962 lbf
Tensile Load, short term, maximum	667 N 149.948 lbf
Compression	10 N/mm 57.101 lb/in
Compression Test Method	FOTP-41 IEC 60794-1 E3
Flex	25 cycles

760253754 | N-192-MP-8G1-F08YL/20T/B2

Flex Test Method	FOTP-104 IEC 60794-1 E6
Impact	2.94 N-m 26.021 in lb
Impact Test Method	FOTP-25 IEC 60794-1 E4
Strain	See long and short term tensile loads
Strain Test Method	FOTP-33 IEC 60794-1 E1
Twist	10 cycles
Twist Test Method	FOTP-85 IEC 60794-1 E7
Vertical Rise, maximum	99 m 324.803 ft

Optical Specifications

Fiber Type	G.657.A2/B2
-------------------	-------------

Environmental Specifications

Installation temperature	0 °C to +50 °C (+32 °F to +122 °F)
Operating Temperature	0 °C to +60 °C (+32 °F to +140 °F)
Storage Temperature	-40 °C to +70 °C (-40 °F to +158 °F)
Cable Qualification Standards	ANSI/ICEA S-83-596 Telcordia GR-409
EN50575 CPR Cable EuroClass Fire Performance	B2ca
EN50575 CPR Cable EuroClass Smoke Rating	s1a
EN50575 CPR Cable EuroClass Droplets Rating	d1
EN50575 CPR Cable EuroClass Acidity Rating	a1
Environmental Space	Dual Rated LSZH/Riser Low Smoke Zero Halogen (LSZH) Riser
Flame Test Listing	NEC OFNR-ST1 (ETL) and c(ETL)
Flame Test Method	CSA FT4 IEC 60332-3 IEC 60754-2 IEC 61034-2 UL 1666 UL 1685

Environmental Test Specifications

Low High Bend	0 °C to +50 °C (+32 °F to +122 °F)
Low High Bend Test Method	FOTP-37 IEC 60794-1 E11
Temperature Cycle	0 °C to +60 °C (+32 °F to +140 °F)
Temperature Cycle Test Method	FOTP-3 IEC 60794-1 F1

Packaging and Weights

Cable weight	205.7 kg/km 138.224 lb/kft
---------------------	------------------------------

* Footnotes

Operating Temperature Specification applicable to non-terminated bulk fiber cable