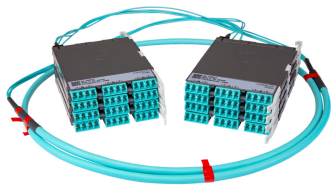


# PPLURGRLCLCR



Propel ULL Singlemode Cabled Module, 1x16 duplex LC Propel module on End A to 1x16 on End B, 16 fiber LSZH Patchcord, Method B Enhanced

- This component requires 4 of the 12 lanes on the Propel Panel blade
- Ultra-low loss (ULL) with Method B Enhanced polarity
- End A module can be installed from rear of panel
- Serialized QR code provides easy access to factory optical test results

## Product Classification

Regional Availability	Asia   Australia/New Zealand   EMEA   Latin America   North America
Portfolio	SYSTIMAX®
Product Type	Fiber cabled module
Product Brand	Propel
Product Series	PPL
Ordering Note	End B module is the same module as End A   For lengths greater than 999 ft (304 m), orders must be in meters   Maximum length is 400 meters

## General Specifications

Configuration Type	PROPEL Module to PROPEL Module
Cable Color	Yellow
Cable Type	Patch cord LSZH
Interface, front	LC/UPC
Interface Feature, front	Duplex   Shuttered
Interface Color, front	Blue
Interface, rear	LC/UPC
Interface Feature, rear	Duplex   Shuttered
Interface Color, rear	Blue
Module Size, end A	16 fiber
Module Size, end B	16 fiber
Module Quantity, end A	1
Module Quantity, end B	1
Polarity	Method B Enhanced (ULL)
Total Fibers, quantity	16

# PPLURGRLCLCR

Total Ports, quantity, front	8
Total Ports, quantity, rear	8

## Dimensions

Height	11 mm   0.433 in
Width	98 mm   3.858 in
Depth	170 mm   6.693 in
Breakout Length, end B	23 in
Cable Assembly Length Range (m)	1 – 400
Cable Assembly Length Range (ft)	2 – 999

## Ordering Tree



## Optical Specifications

Fiber Mode	Singlemode
Fiber Type	OS2
Insertion Loss, maximum	0.6 dB

## Environmental Specifications

Qualification Standards	IEC 61753-1   TIA-568.3-D
Safety Standard	c-UL-us

## Packaging and Weights

Packaging quantity	1
--------------------	---

## Regulatory Compliance/Certifications

Agency	Classification
--------	----------------

# PPLURGRLCLCR

CHINA-ROHS	Above maximum concentration value
ROHS	Compliant/Exempted
UK-ROHS	Compliant/Exempted



## Included Products

760251072	–	Fiber indoor cable, TeraSPEED® Low Smoke Zero Halogen Riser for Light Duty MPO
N-016-MP-8G1-F30YL/D		Patchcords, 16 fiber, Singlemode G.657.A2/B2, Feet jacket marking, Yellow jacket color, Dca flame rating