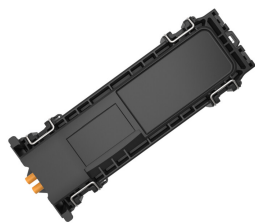


SRC1-U5A1C1BA000



NOVUX™ Specialty Range Closure 50, splice only, no adapters, no splitters, 24 splices, SMOUV® 45mm splice protectors, black, no cable retention

- Modern drop solution offering providers the agility and flexibility to use it in last-mile fiber network applications, both above and below ground
- Protected from harsh conditions by CommScope’s Octopus gel sealing technology
- Agnostic to connectivity technologies: splice, connector, field-installable connector for agility and flexibility
- Identification plate for either QR code or customer logo
- QR code and CommScope cTrak® app for one-click access to all product information

Product Classification

Regional Availability	Asia EMEA Latin America
Regional Availability Note	Contact your local CommScope representative for specific availability
Product Type	Single-ended, rectangular fiber closure
Product Brand	NOVUX™
Product Series	SRC50

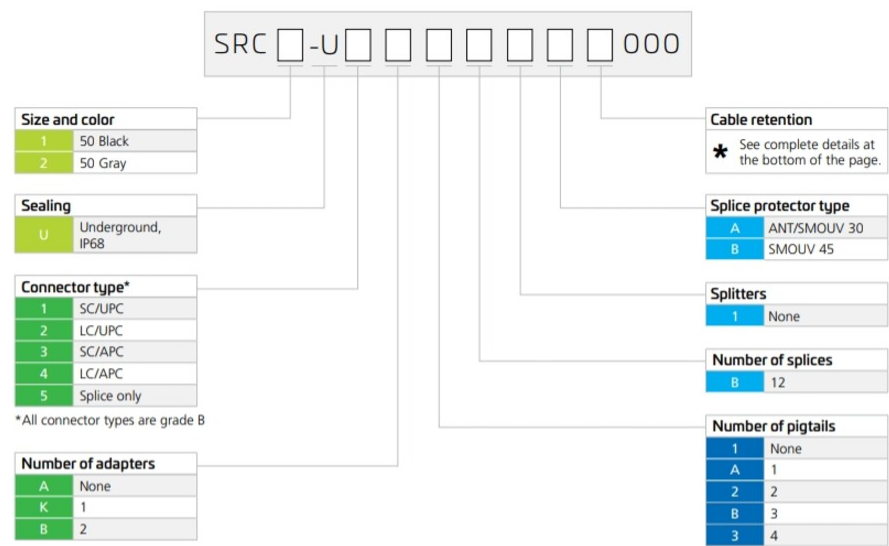
General Specifications






Cable Capacity, Drop	2 Flat 8.0 x 4.5 mm (0.30 x 0.17 in) 2 Round 1.2–8.0 mm (0.05–0.31 in)
Cable Ports Quantity, total	2 multi-out ports (4 cables)
Cable Sealing Type	Compressed gel
Cable Termination Attachments, quantity	2
Closure Sealing Type	Hinged with latch
Closure Style	Single-ended
Color	Black
Mounting	Handhole Pedestal Wall/Pole Mount, mounting kit included
Network Area Type	Drop
Port Type	No adapter No adapter
Port, quantity	0
Splice Tray Included, quantity	1
Splice Tray Type Included	12-way, heat shrink
Splicing Capacity, maximum	24

SRC1-U5A1C1BA000

Splicing Capacity, Single Fusion, maximum	24
Splicing Type, Supported	Single fusion
Split Ratio	Symmetrical
Splitter Type	No splitter
Splitter, quantity	0
Dimensions	
Height	267 mm 10.512 in
Width	87 mm 3.425 in
Depth	49 mm 1.929 in
Cable Entry Drop Port Diameter	8 mm (0.31 in) mm

Ordering Tree



<div>Cable retention^a</div> <div><div>A</div><div>None</div></div> <div><div>B</div><div>NVX-CR-MC-FT-NN</div></div> <div><div>C</div><div>NVX-CR-MC-RD-NN</div></div> <div><div>D</div><div>NVX-CR-SA-SM-NN</div></div> <div><div>E</div><div>NVX-CR-TI-SM-NN</div></div> <div><div>F</div><div>NVX-CR-DU-FL-NN</div></div>	<div>Cable Termination Unit (CTU) options</div> <div><div>B</div><div><div>NVX-CR-MC-FT-NN</div><ul style="list-style-type: none">Flat cableMetal clipRange 3 x 5 to 4 x 8 mm</div></div> <div><div>C</div><div><div>NVX-CR-MC-RD-NN</div><ul style="list-style-type: none">Round cableMetal clipRange 4 to 6.2 mm</div></div> <div><div>D</div><div><div>NVX-CR-SA-SM-NN</div><ul style="list-style-type: none">Round cableDia up to 8 mmStrength memberAramid yarnsSingle layer</div></div> <div><div>E</div><div><div>NVX-CR-TI-SM-NN</div><ul style="list-style-type: none">Round cableDia up to 8 mmAramid yarnsSingle layer</div></div> <div><div>F</div><div><div>NVX-CR-DU-FL-NN</div><ul style="list-style-type: none">Round cableDia up to 6.2 mmAramid yarnsDual layerCompact length</div></div>
---	---

^a 2 cable attachments are supplied.

SRC1-U5A1C1BA000

Material Specifications

Material Type Impact-resistant polymer

Optical Specifications

Fiber Type G.657.A1 | G.657.A2 | G.657.B3

Environmental Specifications

Operating Temperature -40 °C to +70 °C (-40 °F to +158 °F)

Environmental Space Above ground | Below ground | Direct burial

Qualification Standards IEC 60529, IP68 + 2 m waterhead | IEC 61753-1, category G

UV Resistance UV stabilized

Water Resistance Flash test valve at 2 psi (20 kPa)

Packaging and Weights

Packaging quantity 10

Packaging Type Box | Carton