

## 1.0 GENERAL NOTES

1.1 ALL METRIC DIMENSIONS ARE IN BRACKETS [X. X]

1.2 FOR PATENT INFO: <https://www.cs-pat.com>

## 2.0 DESIGN NOTES

2.1 ANY HAZARDS OR OBSTRUCTIONS TO THE CLIMBING FACILITY AND SAFETY CLIMB MUST BE IDENTIFIED PRIOR TO INSTALLING THE APPURTENANCE. ADDITIONAL PRODUCTS MAY BE REQUIRED TO MAINTAIN THE INTEGRITY OF THE SAFETY CLIMB. DURING INSTALLATION, TEMPORARY AND/OR PERMANENT PRECAUTIONARY MEASURES SHOULD BE TAKEN TO PRESERVE THE CLIMBING FACILITY AND/OR SAFETY CLIMB

## 2.2 INSTALL SO AS TO NOT UNNECESSARILY OBSTRUCT THE CLIMBING PATH OR CLIMBING FACILITY

2.3 THREADED RODS CAN BE CUT BACK POST INSTALLATION TO PREVENT OBSTRUCTION AS PER REQUIREMENTS OF TOWER OWNER

2.4) REVIEWED FOR USE WITH A MINIMUM POLE DIAMETER OF 10" WITH WALL THICKNESS OF 3/16" AND A YIELD STRENGTH OF 36 KSI. FOR USE ON THINNER MATERIAL REQUIRES ADDITIONAL ENGINEERING REVIEW

### 3.0 MANUFACTURING/SPECIAL REQUIREMENTS

3.1 TIGHTEN ALL BOLTS SECURING FLAT PLATES BY THE TURN-OF-NUT METHOD. TIGHTEN ALL U-BOLTS USING TURN-OF-NUT METHOD WITH ATTENTION TO LEAVE EQUAL DISTANCE AND EQUAL FORCE ON EACH LEG OF THE U-BOLT

#### 4.0 TEST

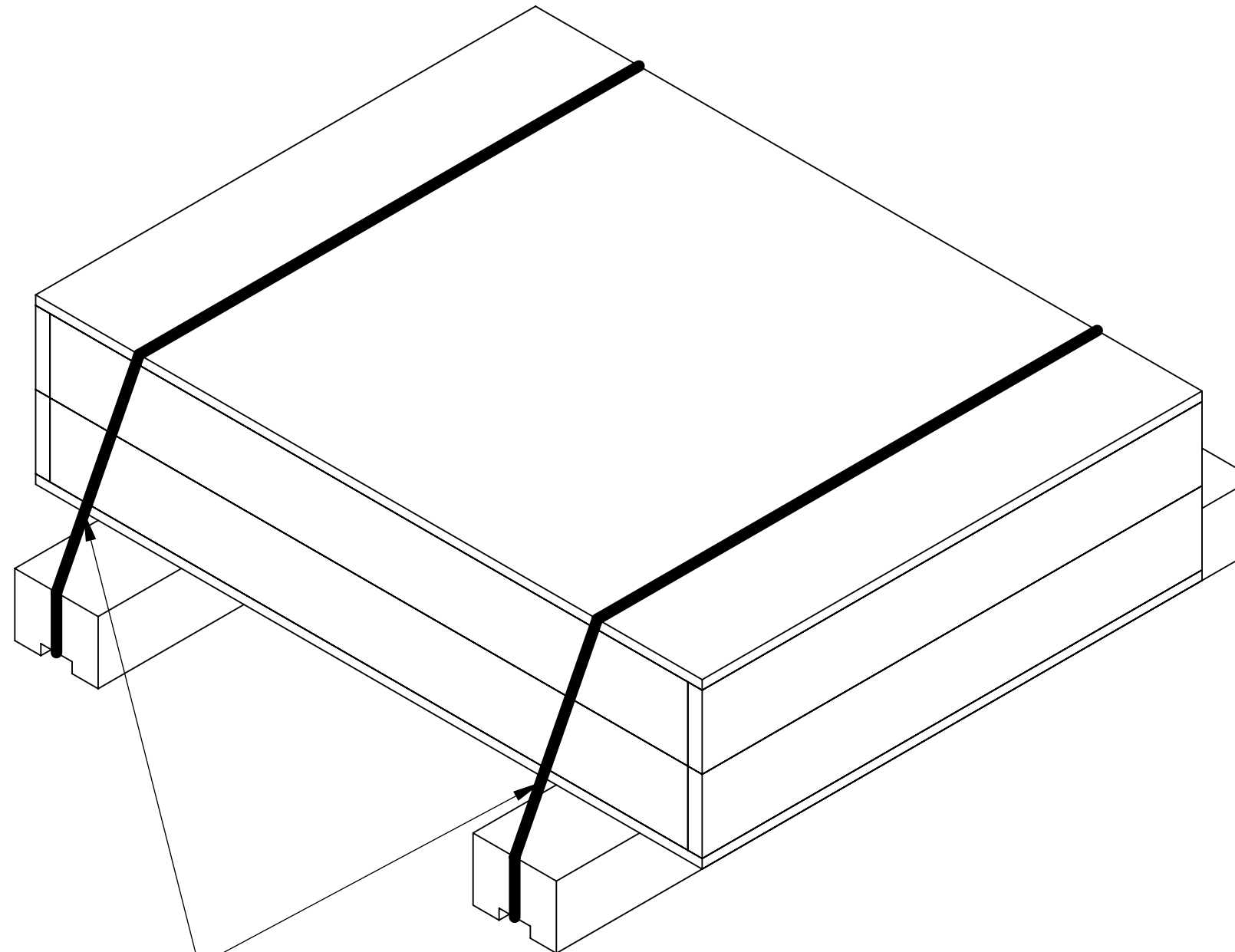
## 5.0 PACKAGING

5.1 PACKAGING SHALL MEET COMMScope REQUIREMENTS PER DOCUMENT IS-PL-3005

## 5.2 PRINTED DOCUMENT TO BE PLACED INSIDE POLYBAG AND THEN IN SHIPPING CONTAINER

### 5.3 EXTRA HARDWARE MAY BE SUPPLIED, BAGGED AND SHIPPED

REVISIONS			
REV.	DESCRIPTION	DATE	APPROVED
A	INITIAL RELEASE	JL1183 14MAR23	YW1045 40163038CMO
B	UPDATED NOTE:UPDATED MAXIMUM LOAD PER EYEBOLT 1500 LBS WAS 1000 LBS & MAXIMUM LOAD PER MOUNT 4500 LBS WAS 3000 LBS	LS1146 10MAY24	EB1063 40195295CMO
C	UPDATED LOAD TAG	LS1146 29MAY24	EB1063 40196768CMO



STRAP FOR REFERENCE

NOTE: 1 - MAXIMUM NET CABLE WEIGHT FOR STRAIGHT POLES:

A- PER EYEBOLT = 750 LBS

B- PER MOUNT = 2250 LBS


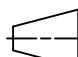
## 2 - MAXIMUM NET CABLE WEIGHT FOR TAPERED POLES:

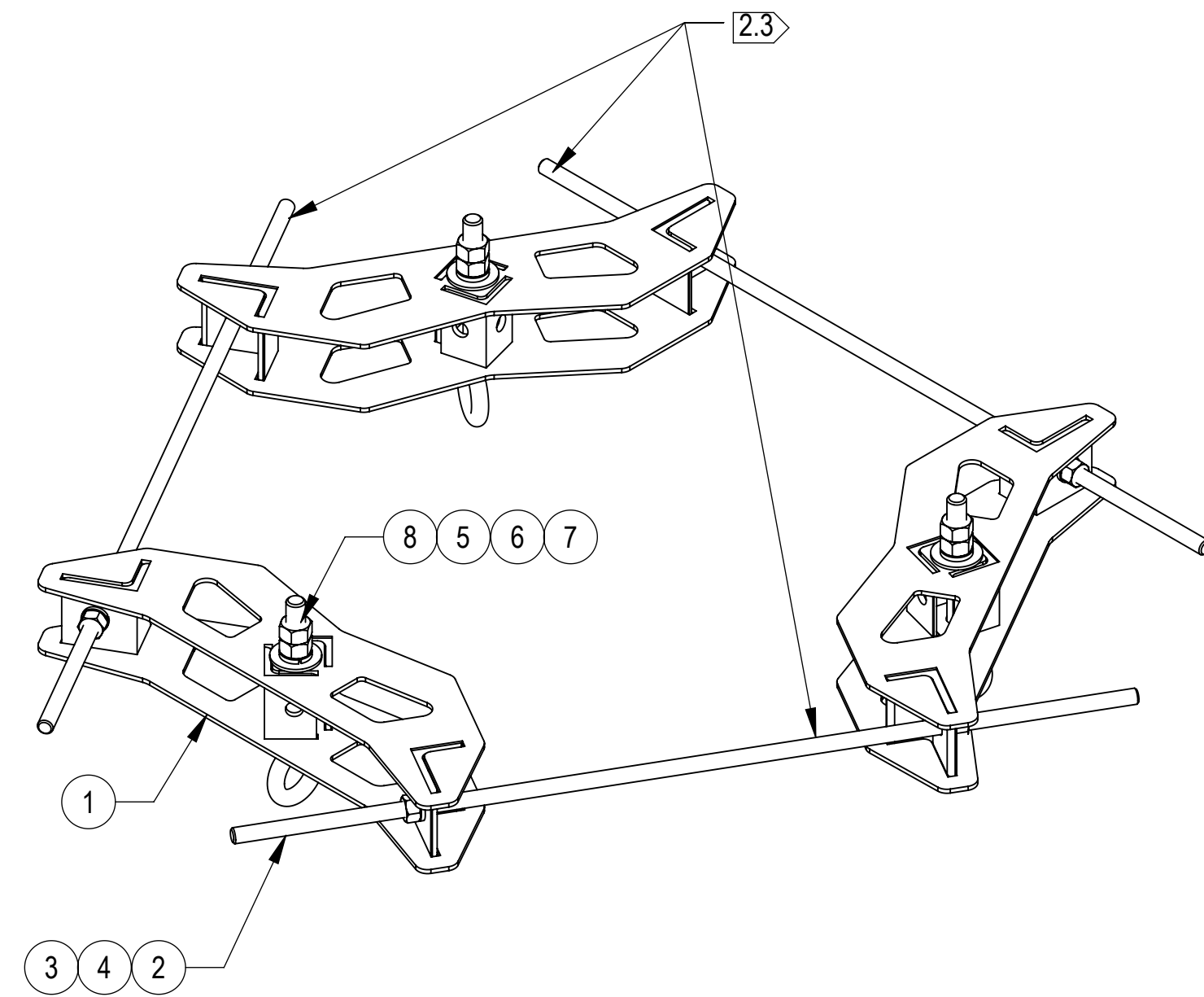
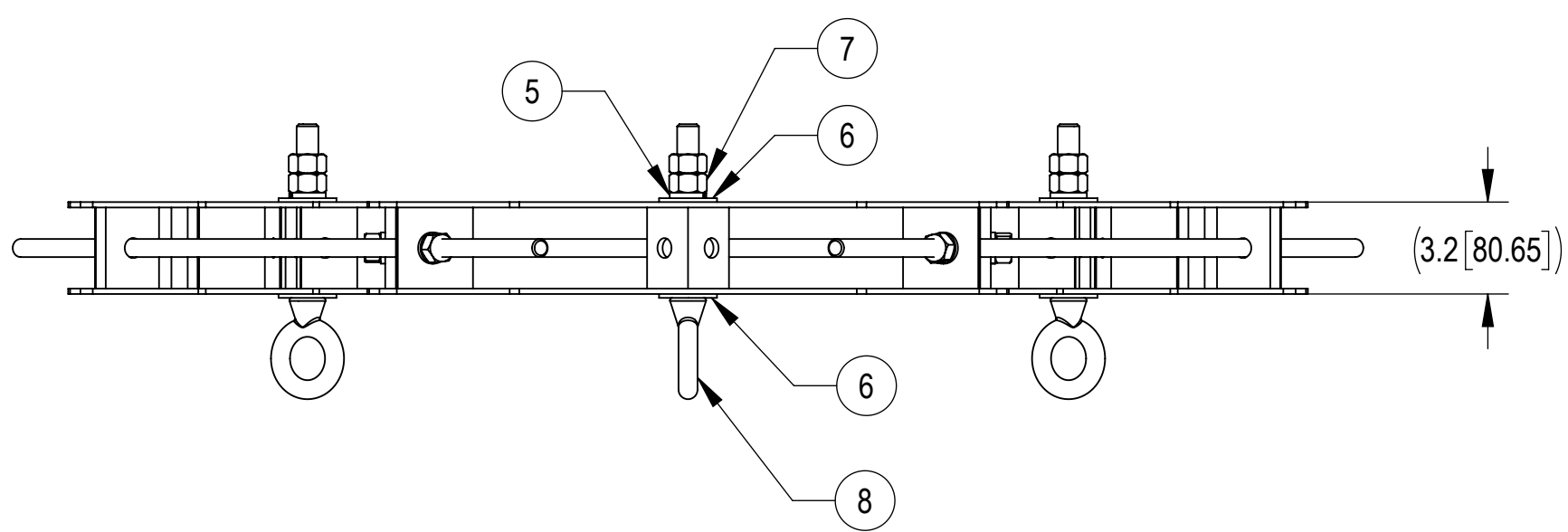
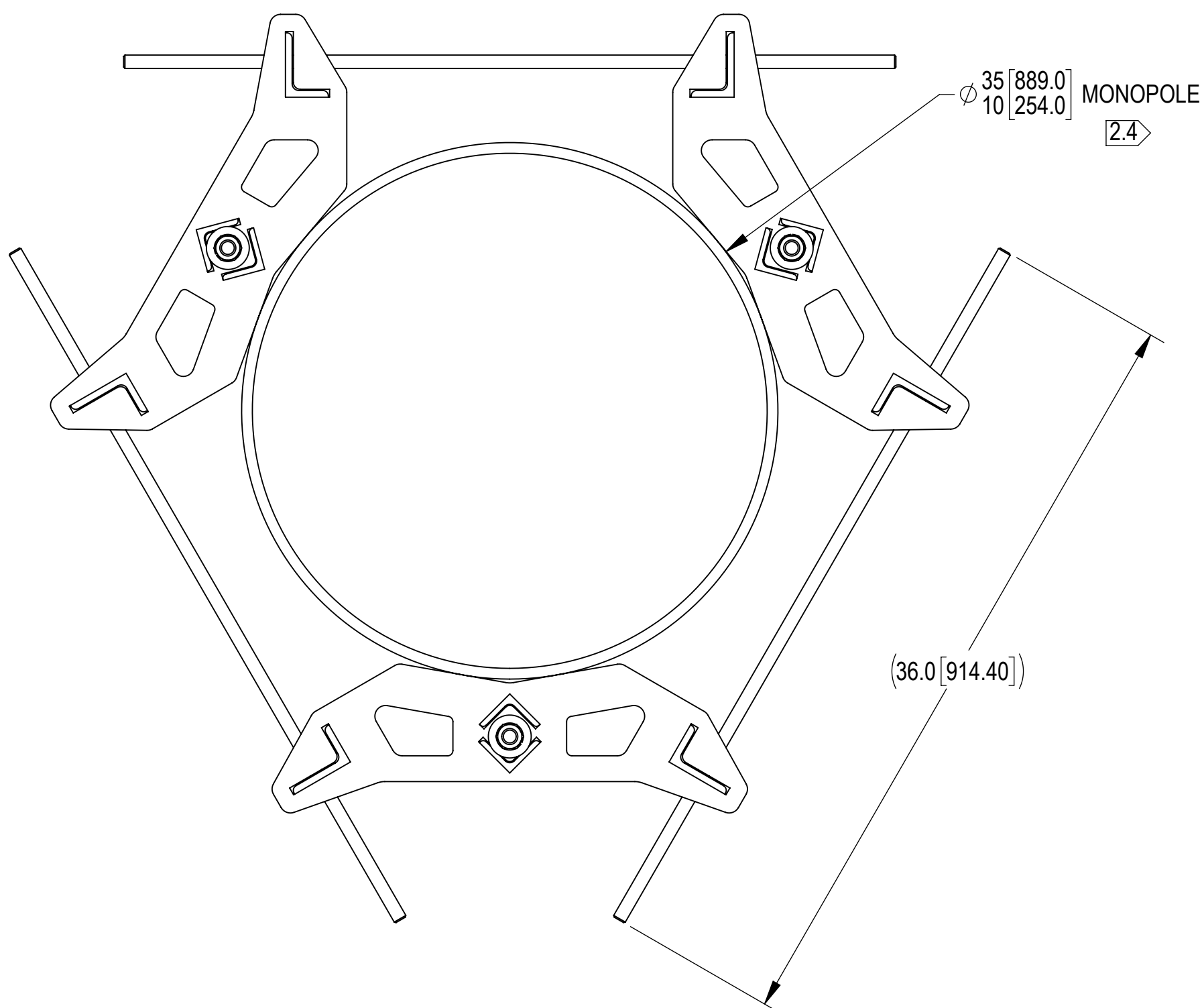
A- PER EYEBOLT = 1000 LBS

B- PER MOUNT = 3000 LBS

3 - REVIEWED FOR USE WITH A MINIMUM POLE DIAMETER OF 10" WITH WALL THICKNESS OF 3/16" AND A YIELD STRENGTH OF 36 KSI. FOR USE ON THINNER MATERIAL REQUIRES ADDITIONAL ENGINEERING REVIEW

DENSITY		lbs/in <sup>3</sup>
MASS	49.5	lbs
VOLUME	1114.2	in <sup>3</sup>
SURFACE AREA	5628.2	in <sup>2</sup>
HEIGHT	3.2[80.7]	
LENGTH	36.0[914.4]	
WIDTH	36.0[914.4]	


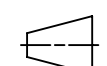
COMMSCOPE, INC. OF NORTH CAROLINA										
TOLERANCES							SAP MATERIAL MASTER			
0 PLACE X[X] ± 0.2[6.3] 2 PLACE .XX[X] ± 0.06[1.5]							860669616-1035			
1 PLACE .X[X] ± 0.12[3.0] ANGLES ± 2°										
FINISH							MATERIAL			
UNLESS OTHERWISE SPECIFIED DIMENSIONS ARE IN INCHES INTERPRET PER ANSI Y 14.5M-1994		NAME	DATE	TITLE  GRIP ANCHOR, MONOPOLE, 10"-35"						
	CE	JL1183	14MAR23							
	RW	LS1146	05/29/2024							
	AD	EB1063	05/30/2024							
	RE	YMENG	05/30/2024							
	ECN	40196768CMO								
SCALE 1:8				DOCUMENT NO. 860669616-1035						
SIZE	Auth Group		INSL	MODEL			DRAWING			SHEET  1 OF 3
C				VERSION	STATUS	REVISION	VERSION	STATUS	REVISION	
				01	RE	A	02	RE	C	



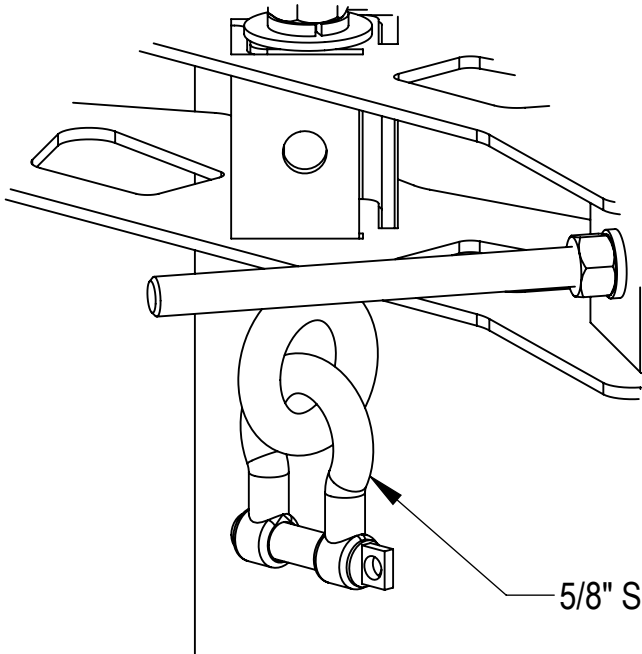
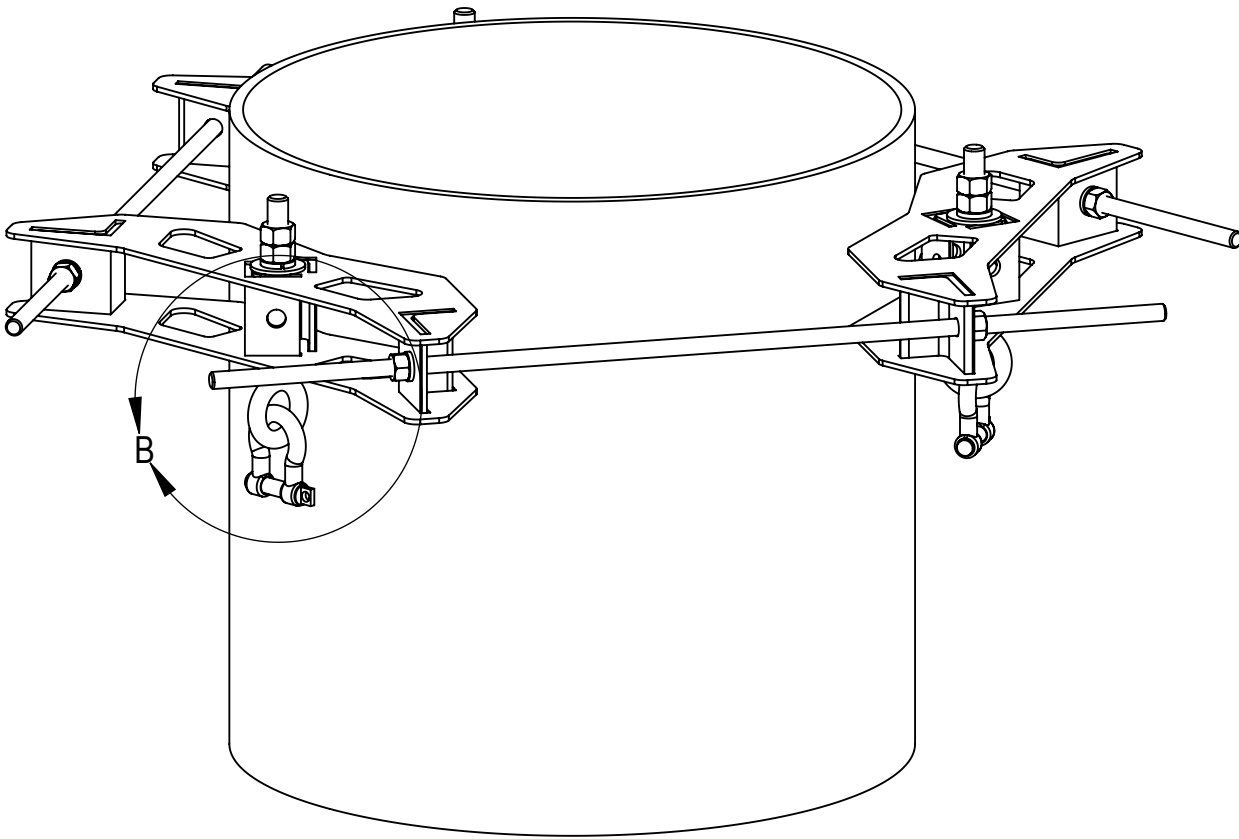
NOTE: 1 - MAXIMUM NET CABLE WEIGHT FOR STRAIGHT POLES:  
A- PER EYEBOLT = 750 LBS  
B- PER MOUNT = 2250 LBS  
2 - MAXIMUM NET CABLE WEIGHT FOR TAPERED POLES:  
A- PER EYEBOLT = 1000 LBS  
B- PER MOUNT = 3000 LBS  
3 - REVIEWED FOR USE WITH A MINIMUM POLE DIAMETER OF 10" WITH WALL THICKNESS OF 3/16" AND A YIELD STRENGTH OF 36 KSI. FOR USE ON THINNER MATERIAL REQUIRES ADDITIONAL ENGINEERING REVIEW

COMPONENT PART NUMBERS PROVIDED FOR ASSEMBLY PURPOSES;  
INDIVIDUAL COMPONENTS MAY BE SHIPPED AS PARTS WITHIN AN INCLUDED KIT.

ITEM NO.	PART NUMBER	DESCRIPTION	QTY.	WEIGHT	NOTE NO.
1	MTC8606-02-00	HG ANCHOR, MONOPOLE MOUNT WELDMENT	3	12.45 LBS	
2	MT-382-36	5/8" X 36" GALV THREADED ROD	3	3.11 LBS	
3	GN-05	5/8" GALV HEX NUT	6	0.08 LBS	
4	GWL-05	5/8" GALV LOCK WASHER	6	0.03 LBS	
5	GWL-06	3/4" GALV LOCK WASHER	3	0.04 LBS	
6	GWF-06	3/4" GALV FLAT WASHER	6	0.10 LBS	
7	GN-06	3/4" GALV HEX NUT	3	0.15 LBS	
8	9674-4	BOLT,EYE,3/4X6,STL,GALV	3	0.20 LBS	

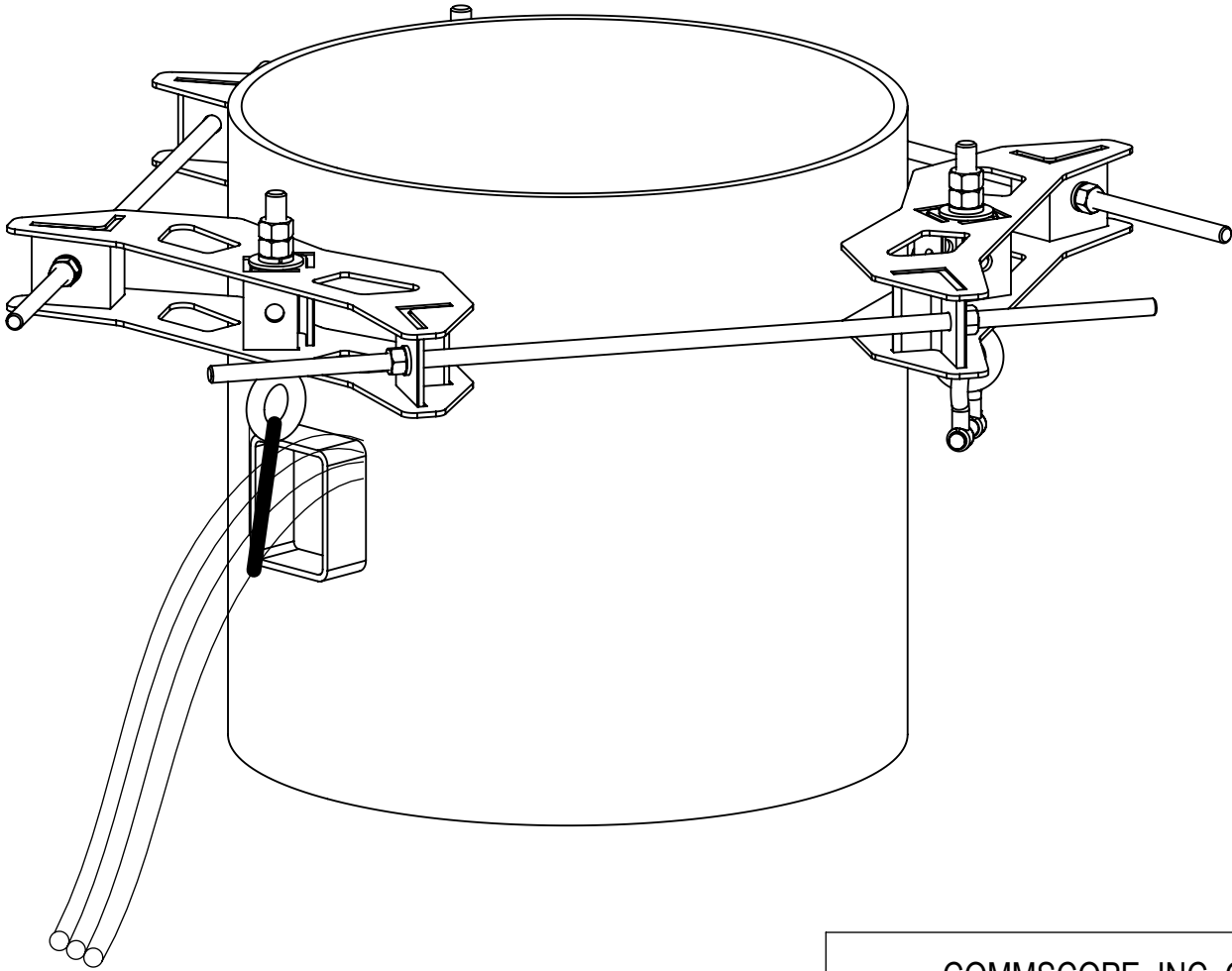
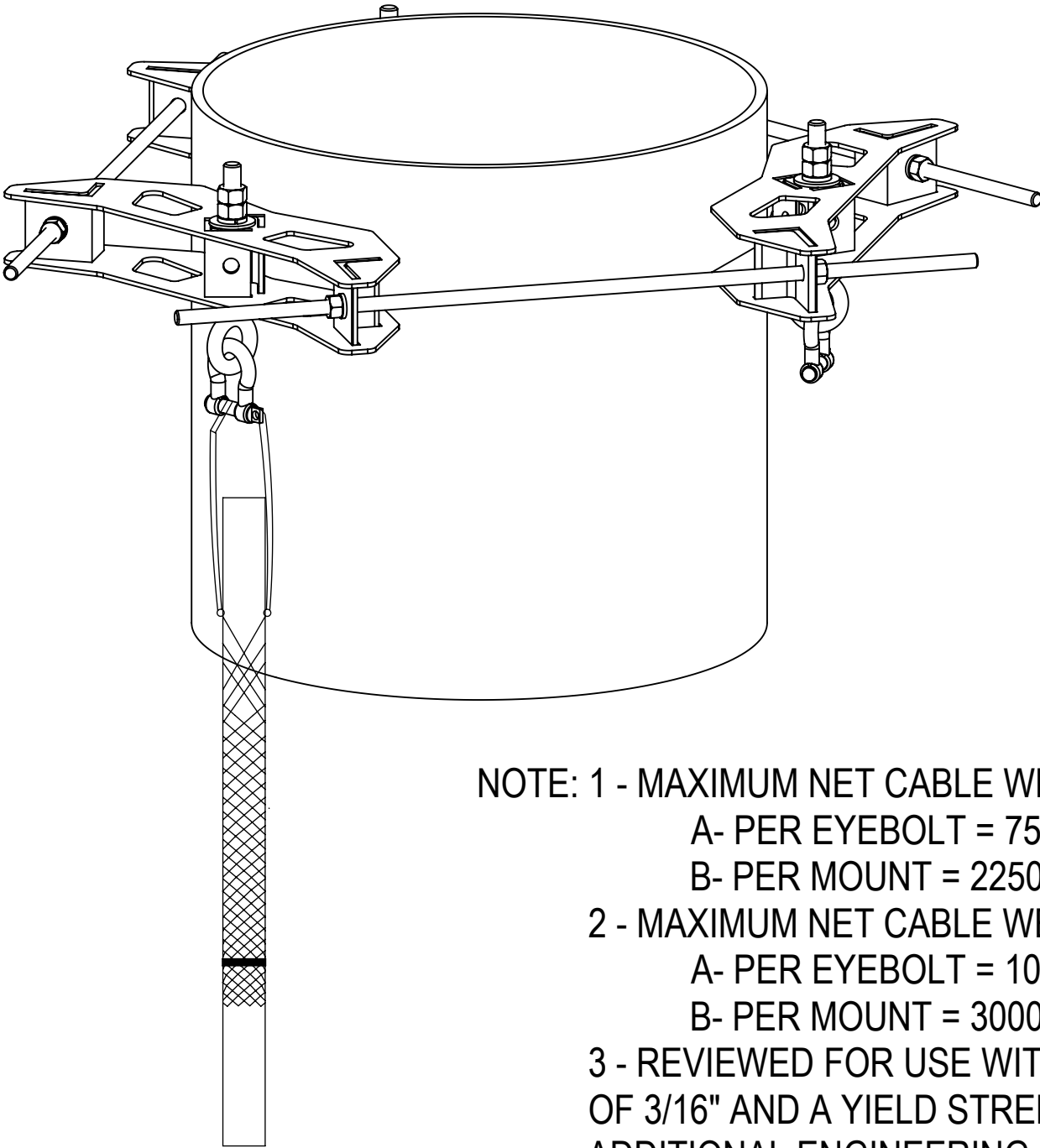
COMMScope, INC. OF NORTH CAROLINA					
TITLE					
GRIP ANCHOR,MONOPOLE,10"-35"					
SIZE	SCALE	DOCUMENT NO.			
C	1:10	860669616-1035			
 		DRAWING			SHEET 2 OF 3
		VERSION	STATUS	REVISION	
		02	RE	C	

OPTIONAL ACCESSORIES  
(PURCHASED SEPARATELY)

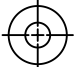
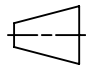


DETAIL B  
SCALE 1 : 3

SCHEMATIC DIAGRAM OF CABLE FIXING METHOD



NOTE: 1 - MAXIMUM NET CABLE WEIGHT FOR STRAIGHT POLES:  
A- PER EYEBOLT = 750 LBS  
B- PER MOUNT = 2250 LBS  
2 - MAXIMUM NET CABLE WEIGHT FOR TAPERED POLES:  
A- PER EYEBOLT = 1000 LBS  
B- PER MOUNT = 3000 LBS  
3 - REVIEWED FOR USE WITH A MINIMUM POLE DIAMETER OF 10" WITH WALL THICKNESS  
OF 3/16" AND A YIELD STRENGTH OF 36 KSI. FOR USE ON THINNER MATERIAL REQUIRES  
ADDITIONAL ENGINEERING REVIEW

COMMScope, INC. OF NORTH CAROLINA				
TITLE GRIP ANCHOR, MONOPOLE, 10"-35"				
SIZE C	SCALE 1:10	DOCUMENT NO. 860669616-1035		
 		DRAWING		
		VERSION 02	STATUS RE	REVISION C
				SHEET 3 OF 3