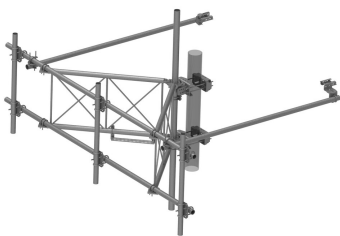


# SFG23RHDXL11-3-96



G23RHDXL PIM OPTIMIZED SPACING High Capacity Sector Frame with extended 10' Spine for RRU Mounting & extended frame for sites requiring increased sector to sector antenna spacing. 2 7/8in OD x 11ft face with (3) 2-7/8in OD x 96in Antenna pipes

## Product Classification

|                |                                  |
|----------------|----------------------------------|
| Product Type   | High capacity Tower sector frame |
| Product Brand  | PIM-guard                        |
| Product Series | G2                               |

## General Specifications

|                   |  |
|-------------------|--|
| Mounting          | Angle 60°, 203.2 mm (8 in)   Straight or tapered legs up to 203.2 mm (8 in) OD |
| Patent Number     | For patents see: <a href="http://www.cs-pat.com">www.cs-pat.com</a>            |
| Pipe, quantity    | 3  |
| Sectors, quantity | 1  |
| Tower Taper       | Non-tapered   Tapered  |

## Dimensions

|                            |                      |
|----------------------------|----------------------|
| Height                     | 2,438.4 mm   96 in   |
| Face Width                 | 3.353 m   11 ft      |
| Width                      | 3,352.8 mm   132 in  |
| Face Support Pipe Diameter | 73.025 mm   2.875 in |
| Mounting Diameter, maximum | 203.2 mm   8 in      |
| Mounting Diameter, minimum | 38.1 mm   1.5 in     |
| Pipe Outer Diameter        | 73.025 mm   2.875 in |

## Material Specifications

|               |                          |
|---------------|--------------------------|
| Material Type | Hot dip galvanized steel |
|---------------|--------------------------|

## Mechanical Specifications

|                         |   |
|-------------------------|---|
| Wind Rating             | For Specifications, please contact your local ANDREW representative |
| Wind Rating Test Method | TIA/EIA-222-G   |

# SFG23RHDXL11-3-96

---

## Packaging and Weights

|                    |   |
|--------------------|---|
| Included           | Frame   Plain end pipes (3)   Stiff arms (2)   Tower attachment |
| Packaging quantity | 1   |

## \* Footnotes

|             |  |
|-------------|--|
| Wind Rating | BWS—Base Wind Speed; FBC—Florida Building Code |
|-------------|--|