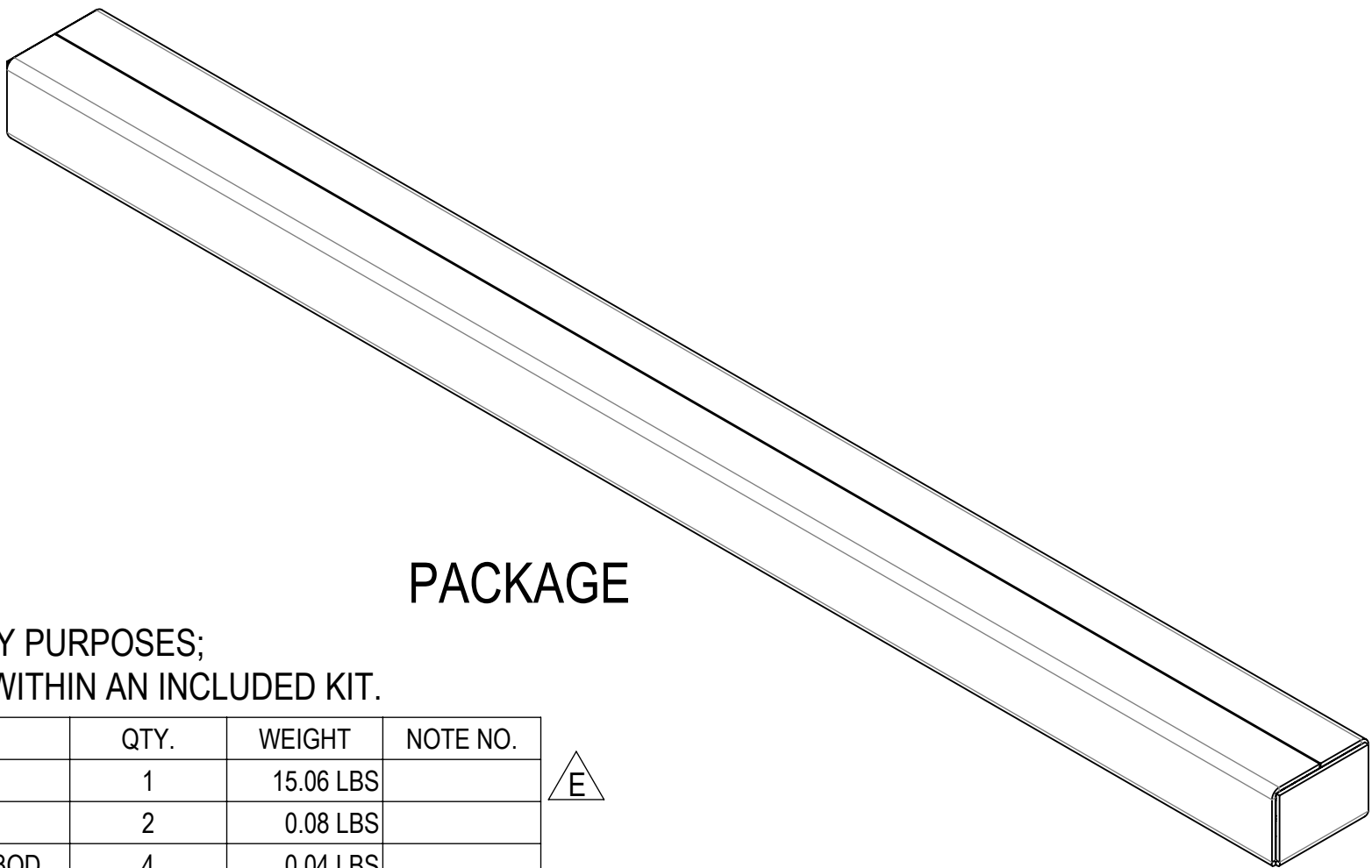
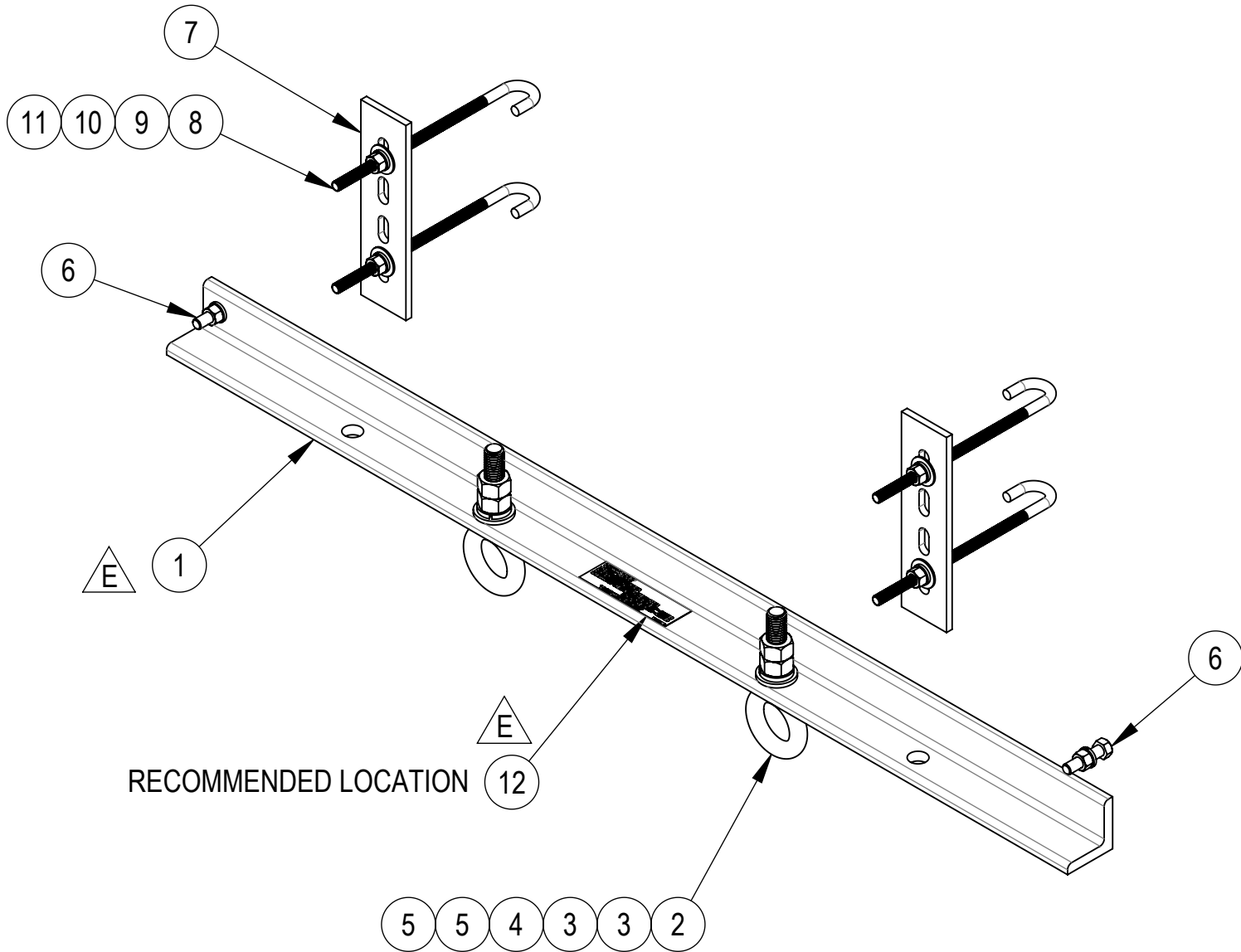
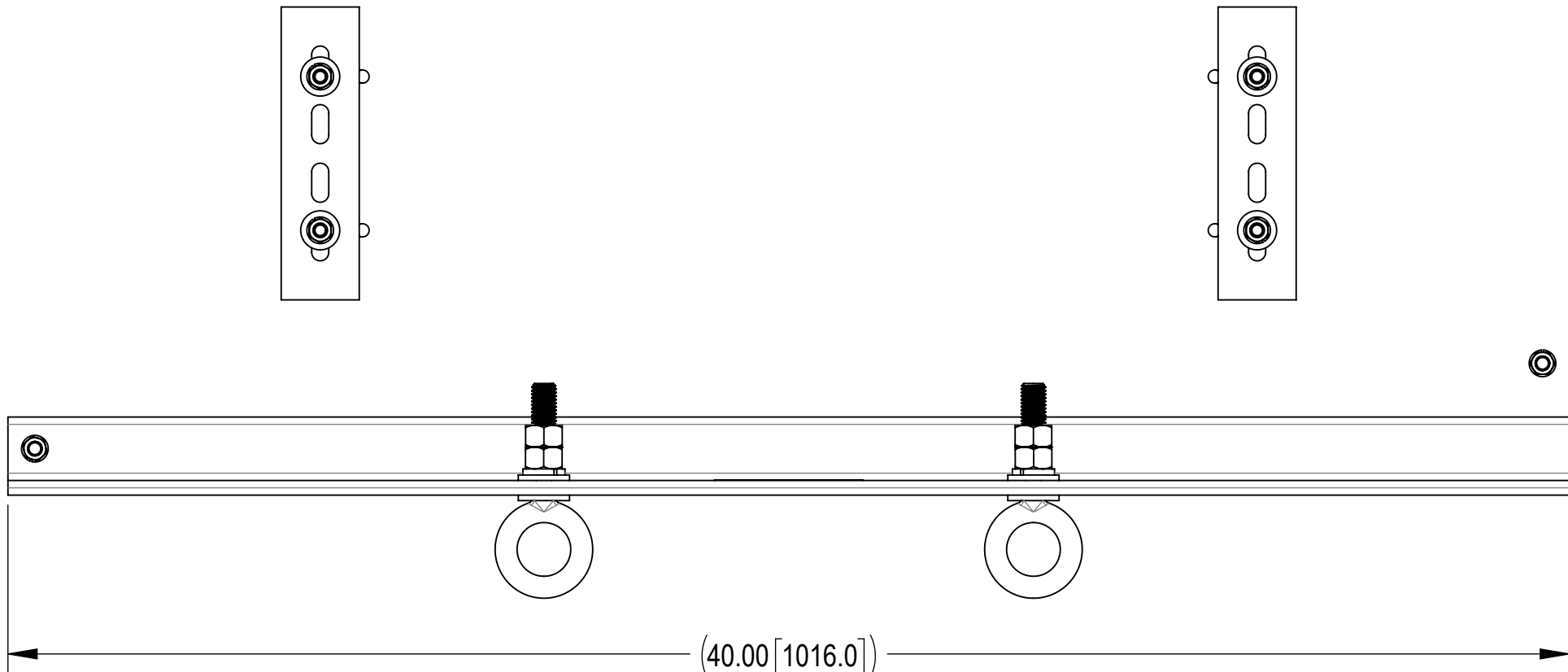


- 4
- 3
- 2
- 1
- 1.0 GENERAL NOTES
- 1.1 ALL METRIC DIMENSIONS ARE IN BRACKETS [X. X]
- 1.2 FOR PATENT INFO: <https://www.cs-pat.com>
- 2.0 DESIGN NOTES
- 2.1 ANY HAZARDS OR OBSTRUCTIONS TO THE CLIMBING FACILITY AND SAFETY CLIMB MUST BE IDENTIFIED PRIOR TO INSTALLING THE APPURTENANCE. ADDITIONAL PRODUCTS MAY BE REQUIRED TO MAINTAIN THE INTEGRITY OF THE SAFETY CLIMB. DURING INSTALLATION, TEMPORARY AND/OR PERMANENT PRECAUTIONARY MEASURES SHOULD BE TAKEN TO PRESERVE THE CLIMBING FACILITY AND/OR SAFETY CLIMB.
- 3.0 MANUFACTURING/SPECIAL REQUIREMENTS
- 3.1 TIGHTEN ALL BOLTS SECURING FLAT PLATES BY THE TURN-OF-NUT METHOD. TIGHTEN ALL U-BOLTS USING TURN-OF-NUT METHOD WITH ATTENTION TO LEAVE EQUAL DISTANCE AND EQUAL FORCE ON EACH LEG OF THE U-BOLT.
- 3.2 ALL FIELD CUT AND DRILLED SURFACES SHALL BE REPAIRED WITH A MINIMUM OF TWO COATS OF ZINGA OR ZINC COTE PER ASTM A780.
- 4.0 TEST
- 5.0 PACKAGING
- 5.1 PACKAGING SHALL MEET COMMSCOPE REQUIREMENTS PER DOCUMENT IS-PL-3005
- 5.2 PRINTED DOCUMENT TO BE PLACED INSIDE POLYBAG AND THEN IN SHIPPING CONTAINER
- 5.3 EXTRA HARDWARE MAY BE SUPPLIED, BAGGED AND SHIPPED

REVISIONS			
REV.	DESCRIPTION	DATE	APPROVED
A	INITIAL RELEASE	RY1002 03JAN24	YZ1080 40185964CMO
B	CHANGED BOX FROM BX92 TO BXEB	RY1002 16JAN24	YZ1080 40185964CMO
C	QTY FOR 9674-1(ITEM 2) & GWL-05(ITEM 4) WAS 1EA, GWF05A(ITEM 3) & GN-05(ITEM 5) WAS 2EA; ADDED NOTE FOR EYEBOLT	RY1002 20FEB24	EB1063 40188637CMO
D	MTC4164-LAB01 (ITEM 12) WAS MTC4164-LAB04	RY1002 12MAR24	EB1063 40190737CMO
E	MTC4164-040A-00 WAS MTC4164-040-00; MTC4164-LAB05 WAS MTC4164-LAB01; CHG LOADING CAPACITY	RY1002 14MAY24	EB1063 40195296CMO





NOTE: -ANY ARRANGEMENTS OF THE EYEBOLTS IS ACCEPTABLE
-MAXIMUM NET CABLE WEIGHT
A -PER EYEBOLT = 1000 LBS
B -IN ANY COMBINATION = 2000 LBS
-NOT TO BE USED FOR HOISTING
-CABLE LADDER TO BE INSPECTED BY COMPETENT PERSON TO ENSURE PROPER INSTALLATION PRIOR TO INSTALL

COMPONENT PART NUMBERS PROVIDED FOR ASSEMBLY PURPOSES;
INDIVIDUAL COMPONENTS MAY BE SHIPPED AS PARTS WITHIN AN INCLUDED KIT.

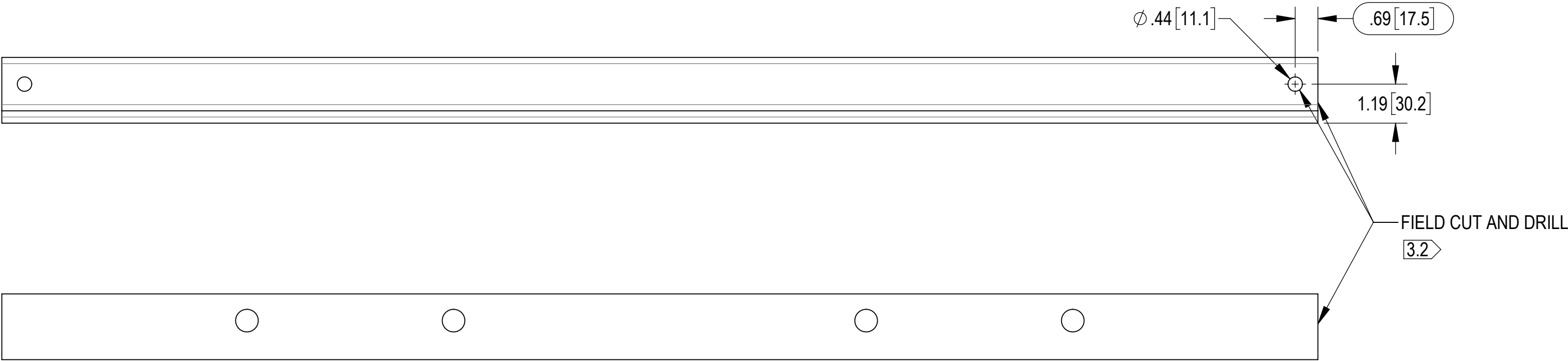
ITEM	PART NO.	DESCRIPTION	QTY.	WEIGHT	NOTE NO.
1	MTC4164-040A-00	40 INCH CROSSMEMBER GALV	1	15.06 LBS	
2	9674-1	BOLT,EYE,5/8X3,STL,ZN PLD	2	0.08 LBS	
3	GWFO5A	GALV FLAT WASHER HARDENED 5/8", 1.3OD	4	0.04 LBS	
4	GWL-05	5/8" GALV LOCK WASHER	2	0.03 LBS	
5	GN-05	5/8" GALV HEX NUT	4	0.08 LBS	
6	GB-03145	3/8" X 1-1/2" GALV BOLT KIT	2	0.07 LBS	
7	HKCLU.02	BACKING PLATE	2	0.95 LBS	
8	GJB0380	8" GALV J-BOLT KIT	4	0.23 LBS	
9	GN-03	3/8" GALV HEX NUT	4	0.02 LBS	
10	GWL-03	3/8" GALV LOCK WASHER	4	0.01 LBS	
11	GWFO3	3/8" GALV FLAT WASHER	4	0.01 LBS	
12	MTC4164-LAB05	LABEL, HG ANCHOR, CABLE LADDER	1	0.00 LBS	

PACKAGE

DENSITY	18.90	lbs/in³
MASS	71.09	lbs
VOLUME	543.36	in³
SURFACE AREA	8.25"	in²
HEIGHT	40.00"	
LENGTH		
WIDTH		

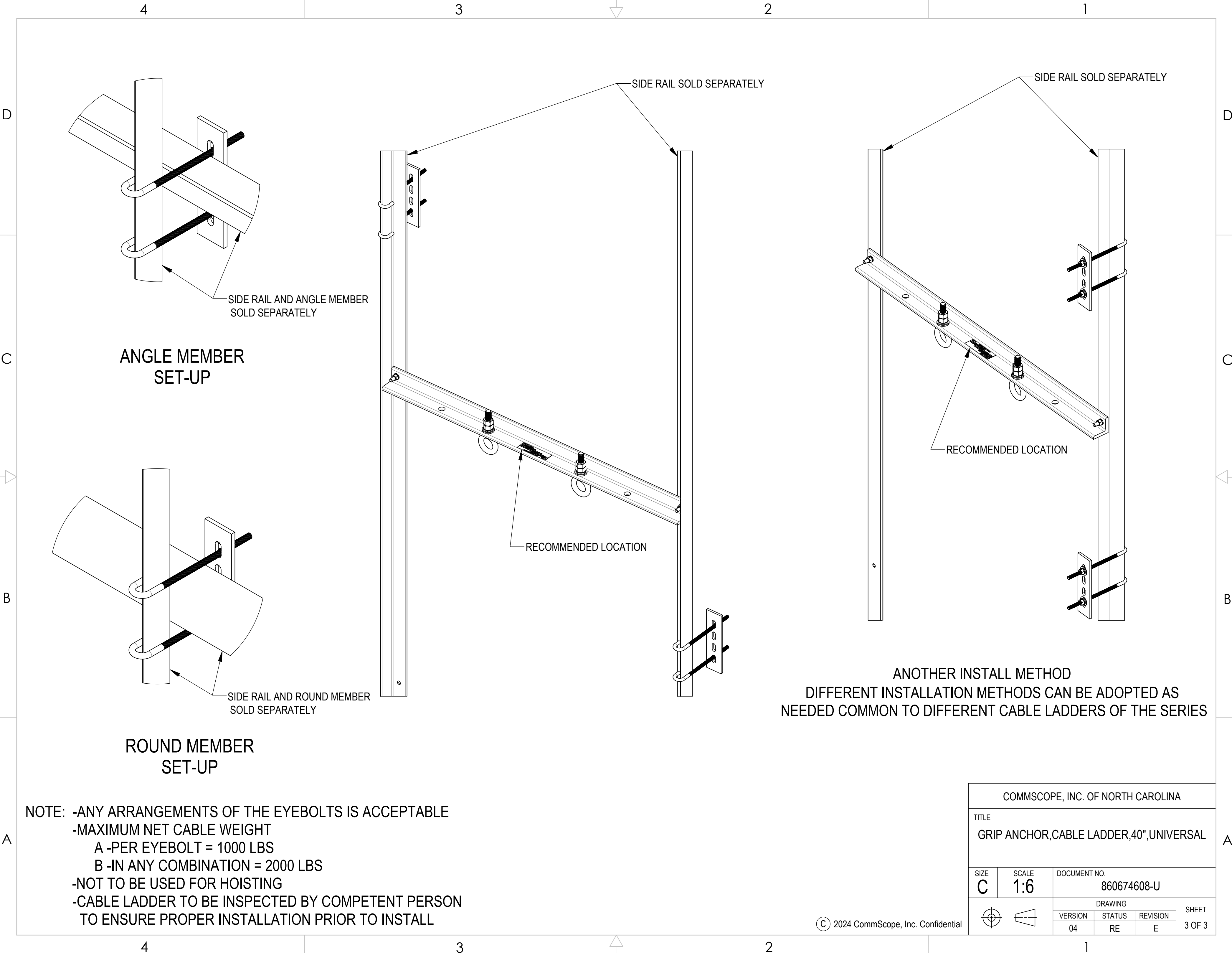
COMMSCOPE, INC. OF NORTH CAROLINA									
TOLERANCES						SAP MATERIAL MASTER			
1 PLACE .X[X] ± 0.2[6.3]			3 PLACE .XXX[X] ± 0.060[1.5]			860674608-U			
2 PLACE .XX[X] ± 0.12[3.0]			ANGLES ± 2°						
FINISH						MATERIAL			
UNLESS OTHERWISE SPECIFIED DIMENSIONS ARE IN INCHES INTERPRET PER ANSI Y 14.5M-1994		NAME	DATE	TITLE GRIP ANCHOR,CABLE LADDER,40",UNIVERSAL					
	CE	RY1002	03JAN24						
	RW	RY1002	05/31/2024						
	AD	EB1063	05/31/2024	SCALE 1:4	DOCUMENT NO. 860674608-U				
	RE	RY1002	06/07/2024						
	ECN 40195296CMO								
SIZE	Auth Group	INSL	MODEL			DRAWING			SHEET 1 OF 3
C			VERSION	STATUS	REVISION	VERSION	STATUS	REVISION	
			04	RE	E	04	RE	E	

THIS PAGE ONLY SHOW FIELD CUT AND DRILL HOLE LOCATION FOR CROSSMEMBER



NOTE: -ANY ARRANGEMENTS OF THE EYEBOLTS IS ACCEPTABLE
-MAXIMUM NET CABLE WEIGHT
A -PER EYEBOLT = 1000 LBS
B -IN ANY COMBINATION = 2000 LBS
-NOT TO BE USED FOR HOISTING
-CABLE LADDER TO BE INSPECTED BY COMPETENT PERSON
TO ENSURE PROPER INSTALLATION PRIOR TO INSTALL

COMMSCOPE, INC. OF NORTH CAROLINA				
TITLE GRIP ANCHOR,CABLE LADDER,40",UNIVERSAL				
SIZE C	SCALE 1:3	DOCUMENT NO. 860674608-U		
		DRAWING		SHEET 2 OF 3
		VERSION 04	STATUS RE	REVISION E


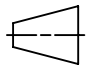


ANGLE MEMBER
SET-UP

ROUND MEMBER
SET-UP

NOTE: -ANY ARRANGEMENTS OF THE EYEBOLTS IS ACCEPTABLE
-MAXIMUM NET CABLE WEIGHT
A -PER EYEBOLT = 1000 LBS
B -IN ANY COMBINATION = 2000 LBS
-NOT TO BE USED FOR HOISTING
-CABLE LADDER TO BE INSPECTED BY COMPETENT PERSON
TO ENSURE PROPER INSTALLATION PRIOR TO INSTALL

ANOTHER INSTALL METHOD
DIFFERENT INSTALLATION METHODS CAN BE ADOPTED AS
NEEDED COMMON TO DIFFERENT CABLE LADDERS OF THE SERIES

COMMSCOPE, INC. OF NORTH CAROLINA					
TITLE GRIP ANCHOR,CABLE LADDER,40",UNIVERSAL					
SIZE C	SCALE 1:6	DOCUMENT NO. 860674608-U			
 		DRAWING			SHEET 3 OF 3
		VERSION 04	STATUS RE	REVISION E	