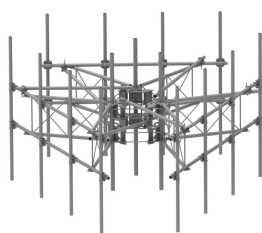


# MCG23RHDXL-14M1296



G23RHDXL PIM OPTIMIZED SPACING High Capacity Monopole platform with extended 10' Spine for RRU Mounting & extended frame for sites requiring increased sector to sector antenna spacing. 2 7/8in OD x 14-ft face with (12) 2-7/8in OD x 96in Antenna pipes

- Extended spine for MCG23 RHDXL mounts that decrease PIM from radio relocation PLUS extended frames for increased antenna-to-antenna spacing
- Increased versatility and stability
- Updated frame provides higher loading
- More RRU mounting available, reducing need for additional mounts
- Better load management
- Less structure stress
- Designed to be used in combination with APEX RRU mounts

## Product Classification

Product Type	High capacity monopole sector frame
Product Brand	PIM-guard
Product Series	G2

## General Specifications

Mounting	Monopole, 381–1270 mm (15–50 in) OD
Pipe, quantity	12
Sectors, quantity	3

## Dimensions

Height	2,438.4 mm   96 in
Face Width	4.42 m   14.5 ft
Width	4,419.6 mm   174 in
Pipe Length	2,438.4 mm   96 in
Face Support Pipe Diameter	73.025 mm   2.875 in
Mounting Diameter, maximum	1270 mm   50 in
Mounting Diameter, minimum	381 mm   15 in
Pipe Outer Diameter	73.025 mm   2.875 in
Stand-off Distance	1,549.4 mm   61 in

## Material Specifications

# MCG23RHDXL-14M1296

---

**Material Type** Hot dip galvanized steel

## Mechanical Specifications

**Wind Rating** For Specifications, please contact your local ANDREW representative

**Wind Rating Test Method** TIA/EIA-222

## Packaging and Weights

**Included** Mounting hardware | Pipe mounts | Plain end pipes (12) | Ring mounts (2) | Sector frames (3) | Stiff arm

**Packaging quantity** 1

**Weight, net** 1,441.743 kg | 3,178.5 lb

## \* Footnotes

**Wind Rating** BWS—Base Wind Speed; FBC—Florida Building Code