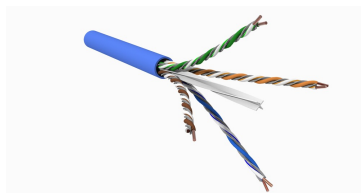


760258509 | 1073A BLU C6 4/21 U/UTP R1000



GigaREACH™ XL "EXTENDED DISTANCE" 1073A Category 6 U/UTP Cable, CMR Riser, blue jacket, 4 pair count, 1000 ft (305 m) length, reel

Product Classification

Regional Availability

Asia | Australia/New Zealand | China | EMEA | Europe | India | Latin America | North America

Portfolio

SYSTIMAX®

Product Type

Twisted pair cable

Product Brand

GigaREACH™ XL

General Specifications

Product Number

1073A

ANSI/TIA Category

6

Cable Component Type

Horizontal

Cable Type

U/UTP (unshielded)

Conductor Type, singles

Solid

Conductors, quantity

8

Jacket Color

Blue

Pairs, quantity

4

Separator Type

Isolator | Tape separator

Transmission Standards

ANSI/TIA-568-D.2 | CENELEC EN 50288-6-1 | ISO/IEC 11801 Class E

Dimensions

Cable Length

304.8 m | 1000 ft

Diameter Over Jacket, nominal

6.731 mm | 0.265 in

Jacket Thickness

0.635 mm | 0.025 in

Conductor Gauge, singles

21 AWG

Electrical Specifications

Insertion Loss Margin

20% to Category 6 standard

Characteristic Impedance

100 ohm

760258509 | 1073A BLU C6 4/21 U/UTP R1000

dc Resistance Unbalance, maximum	5 %
dc Resistance, maximum	4.69 ohms/100 m 1.43 ohms/100 ft
Delay Skew, maximum	45 ns
Dielectric Strength, minimum	1500 Vac 2500 Vdc
LP (Limited Power) Rating	0.6 A
Mutual Capacitance at Frequency	6.4 nF/100 m @ 1 kHz
Nominal Velocity of Propagation (NVP)	70 %
Operating Frequency, maximum	250 MHz
Operating Voltage, maximum	80 V
Remote Powering	Fully complies with the recommendations set forth by IEEE 802.3bt (Type 4) for the safe delivery of power over LAN cable when installed according to ISO/IEC 14763-2, CENELEC EN 50174-1, CENELEC EN 50174-2 or TIA TSB-184-A
Safety Voltage Rating	300 V

Representative Image



Material Specifications

Conductor Material	Bare copper
Insulation Material	Polyolefin
Jacket Material	Fire retardant PVC
Separator Material	Polyolefin

Mechanical Specifications

760258509 | 1073A BLU C6 4/21 U/UTP R1000

Pulling Tension, maximum 11.34 kg | 25 lb

Environmental Specifications

Installation temperature 0 °C to +60 °C (+32 °F to +140 °F)

Operating Temperature -20 °C to +60 °C (-4 °F to +140 °F)

EN50575 CPR Cable EuroClass Fire Performance No Rating

Environmental Note Non-plenum

Environmental Space Indoor | Non-plenum | Riser

Fire Safety Listing CMR

Flame Test Method CMR | UL 1666 | UL 444

Packaging and Weights

Cable weight 58.038 kg/km | 39 lb/kft

Packaging Type Reel

Regulatory Compliance/Certifications

Agency	Classification
CHINA-ROHS	Below maximum concentration value
REACH-SVHC	Compliant as per SVHC revision on www.commscope.com/ProductCompliance
ROHS	Compliant
UK-ROHS	Compliant

