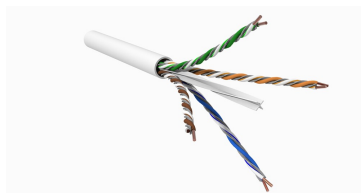


# 760258510 | 1073A WHT C6 4/21 U/UTP R1000



GigaREACH™ XL "EXTENDED DISTANCE" 1073A Category 6 U/UTP Cable, CMR Riser, white jacket, 4 pair count, 1000 ft (305 m) length, reel

## Product Classification

### Regional Availability

Asia | Australia/New Zealand | China | EMEA | Europe | India | Latin America | North America

### Portfolio

SYSTIMAX®

### Product Type

Twisted pair cable

### Product Brand

GigaREACH™ XL

## General Specifications

### Product Number

1073A

### ANSI/TIA Category

6

### Cable Component Type

Horizontal

### Cable Type

U/UTP (unshielded)

### Conductor Type, singles

Solid

### Conductors, quantity

8

### Jacket Color

White

### Pairs, quantity

4

### Separator Type

Isolator | Tape separator

### Transmission Standards

ANSI/TIA-568-D.2 | CENELEC EN 50288-6-1 | ISO/IEC 11801 Class E

## Dimensions

### Cable Length

304.8 m | 1000 ft

### Diameter Over Jacket, nominal

6.731 mm | 0.265 in

### Jacket Thickness

0.635 mm | 0.025 in

### Conductor Gauge, singles

21 AWG

## Electrical Specifications

### Insertion Loss Margin

20% to Category 6 standard

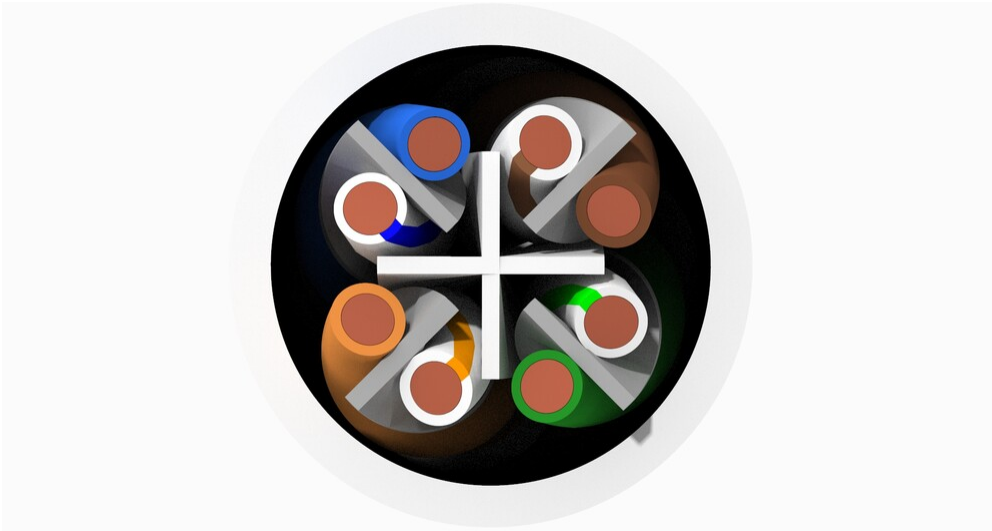
### Characteristic Impedance

100 ohm

# 760258510 | 1073A WHT C6 4/21 U/UTP R1000

<b>dc Resistance Unbalance, maximum</b>	5 %
<b>dc Resistance, maximum</b>	4.69 ohms/100 m   1.43 ohms/100 ft
<b>Delay Skew, maximum</b>	45 ns
<b>Dielectric Strength, minimum</b>	1500 Vac   2500 Vdc
<b>LP (Limited Power) Rating</b>	0.6 A
<b>Mutual Capacitance at Frequency</b>	6.4 nF/100 m @ 1 kHz
<b>Nominal Velocity of Propagation (NVP)</b>	70 %
<b>Operating Frequency, maximum</b>	250 MHz
<b>Operating Voltage, maximum</b>	80 V
<b>Remote Powering</b>	Fully complies with the recommendations set forth by IEEE 802.3bt (Type 4) for the safe delivery of power over LAN cable when installed according to ISO/IEC 14763-2, CENELEC EN 50174-1, CENELEC EN 50174-2 or TIA TSB-184-A
<b>Safety Voltage Rating</b>	300 V

## Representative Image



## Material Specifications

<b>Conductor Material</b>	Bare copper
<b>Insulation Material</b>	Polyolefin
<b>Jacket Material</b>	Fire retardant PVC
<b>Separator Material</b>	Polyolefin

## Mechanical Specifications

# 760258510 | 1073A WHT C6 4/21 U/UTP R1000

---

**Pulling Tension, maximum** 11.34 kg | 25 lb

## Environmental Specifications

**Installation temperature** 0 °C to +60 °C (+32 °F to +140 °F)  
**Operating Temperature** -20 °C to +60 °C (-4 °F to +140 °F)  
**EN50575 CPR Cable EuroClass Fire Performance** No Rating  
**Environmental Note** Non-plenum  
**Environmental Space** Indoor | Non-plenum | Riser  
**Fire Safety Listing** CMR  
**Flame Test Method** CMR | UL 1666 | UL 444

## Packaging and Weights

**Cable weight** 58.038 kg/km | 39 lb/kft  
**Packaging Type** Reel

## Regulatory Compliance/Certifications

<b>Agency</b>	<b>Classification</b>
CHINA-ROHS	Below maximum concentration value
REACH-SVHC	Compliant as per SVHC revision on <a href="https://www.commscope.com/ProductCompliance">www.commscope.com/ProductCompliance</a>
ROHS	Compliant
UK-ROHS	Compliant

