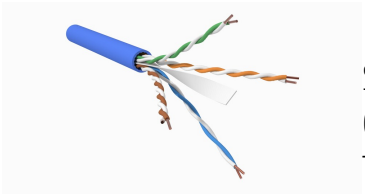


760258450 | 2081B BLU C6 4/23 U/UTP W1000



SYSTIMAX GigaSPEED XL5™ 2081B ETL Verified Category 6 U/UTP Cable, plenum, blue jacket, 4 pair count, 1000 ft (305 m) length, WE TOTE® box

Product Classification

Regional Availability	Asia Australia/New Zealand EMEA Latin America North America
Portfolio	SYSTIMAX®
Product Type	Twisted pair cable
Product Brand	GigaSPEED XL5™

General Specifications

Product Number	2081B
ANSI/TIA Category	6
Cable Component Type	Horizontal
Cable Type	U/UTP (unshielded)
Conductor Type, singles	Solid
Conductors, quantity	8
Jacket Color	Blue
Pairs, quantity	4
Separator Type	Bisector
Supported Application	Fully Supports 2.5/5GBASE-T applications in a 4 connector channel @ 100 meters
Transmission Standards	10/100/1000/2.5G/5GBASE-T ANSI/TIA-568.2-D CENELEC EN 50288-6-1 ISO/IEC 11801 Class E

Dimensions

Cable Length	304.8 m 1000 ft
Diameter Over Insulated Conductor	1.016 mm 0.04 in
Diameter Over Jacket, nominal	5.842 mm 0.23 in
Jacket Thickness	0.559 mm 0.022 in
Conductor Gauge, singles	23 AWG

Electrical Specifications

Characteristic Impedance	100 ohm
--------------------------	---------

760258450 | 2081B BLU C6 4/23 U/UTP W1000

dc Resistance Unbalance, maximum	5 %
dc Resistance, maximum	7.61 ohms/100 m 2.32 ohms/100 ft
Dielectric Strength, minimum	1500 Vac 2500 Vdc
Mutual Capacitance at Frequency	5.6 nF/100 m @ 1 kHz
Nominal Velocity of Propagation (NVP)	75 %
Operating Frequency, maximum	300 MHz
Operating Voltage, maximum	80 V
Remote Powering	Fully complies with the recommendations set forth by IEEE 802.3bt (Type 4) for the safe delivery of power over LAN cable when installed according to ISO/IEC 14763-2, CENELEC EN 50174-1, CENELEC EN 50174-2 or TIA TSB-184-A

Representative Image



Material Specifications

Conductor Material	Bare copper
Insulation Material	FEP Polyolefin
Jacket Material	PVC
Separator Material	Flame retardant polyolefin

Mechanical Specifications

Pulling Tension, maximum	11.34 kg 25 lb
--------------------------	------------------

Environmental Specifications

760258450 | 2081B BLU C6 4/23 U/UTP W1000

Installation temperature	0 °C to +60 °C (+32 °F to +140 °F)
Operating Temperature	-20 °C to +60 °C (-4 °F to +140 °F)
Environmental Space	Plenum
Temperature Rating, UL	75 °C 167 °F
Flame Test Method	CMP/FT6
Smoke Test Method	CMP/FT6

Packaging and Weights

Cable weight	43.157 kg/km 29 lb/kft
Packaging Type	WE TOTE® box

Regulatory Compliance/Certifications

Agency	Classification
CHINA-ROHS	Below maximum concentration value
REACH-SVHC	Compliant as per SVHC revision on www.commscope.com/ProductCompliance
ROHS	Compliant
UK-ROHS	Compliant

